

High Current/Circuit Breaker Test Sets

8,000 – 75,000 Amp Output



Testing Applications

- Test virtually any low voltage, molded case, or metal clad direct acting AC circuit breaker by simulating overload and fault conditions
- Test current transformers and thermal or magnetic motor overload relays
- Configured in a series, can be used for substation maintenance, primary injection testing on high voltage circuit breakers and protective relays

Models Available

- HC-8C
- HC-12C
- HC-20C
- HC-40C
- HC-75C

- Fully **automated** testing
- Precise, **repeatable current pulses** with minimal distortion
- Current **wave form** display
- **ISO17025 calibration** upon request



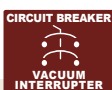
Model HC-8C



Model HC-20C



Model HC-75C



Safety and Design Features

- Circuit breaker protection
- Control power switch with indicator and Output On indicator
- Interlock open indicator
- Emergency Off pushbutton
- Highly reliable SCR's combined with programmable phase angle firing system
- Continuously variable output over entire test range utilizing a motorized vernier and programmable tap selector allowing for both auto-jog and current-hold capabilities
- Sensing circuit selectable between current or contacts
- Digital AC voltmeter for monitoring input, output, and external voltage up to 600 VAC
- Currentmeter accuracy 0.8% of reading +0.3% of range
- Meters calibrated with standards certified by NIST
- Standard HCSS1 and HCSS2 stab sets supplied with optional stab sets available (for models HC12C, HC20C, HC40C and HC75C only)
- Operation/maintenance manual

Computer-Control via WIN HC Software

User-friendly, menu-driven commands provide advanced database and report capabilities for test duplication and recall, report generation, and current wave shape display.

Testing Modes

- Normal – the operator manually controls all functions of the test set.
- Jog-to-Hold – the test set jogs the output on at “Jog on Cycles” and off for “Jog off Secs” and raises the output until the “Hold Amps” is reached.
- Jog-to-Trip – the test set jogs the output on at “Jog on Cycles” and off for “Jog off Secs” until the circuit breaker under test trips.
- Current Hold – the output is held to within 1% of the “Hold Amps”.
- Memory – used for testing the sensitivity pickup of electronic controllers (when the stop button is pressed, the current level is recalled).

Programmable Phase Angle Firing

This feature assures precisely repeatable current pulses with minimal distortion and DC offset. This is achieved by combining the use of highly reliable SCR's and computer-controlled firing system.

Wave Form Display

This feature allows for viewing of the current wave form injected through the breaker. Detection of DC offset or contact bounce can be seen. With the use of the programmable phase angle firing circuit, DC offset may be corrected by varying the firing phase angle.



MODEL	HC8C	HC12C	HC20C	HC40C	HC75C				
INPUT (50 Hz or 60 Hz must be specified)	220-240 V, 100 A, 50/60 Hz 480 V, 50 A, 60 Hz 400 V, 50 A, 60 Hz	240 V, 60 A, 60 Hz 480 V, 30 A, 60 Hz 400 V, 30 A, 50 Hz	240 V, 150 A, 60 Hz 480 V, 75 A, 60 Hz 400 V, 75 A, 50 Hz	240 V, 320 A, 60 Hz 480 V, 160 A, 60 Hz 400 V, 160 A, 50 Hz	480 V, 400 A, 60 Hz 400 V, 400 A, 50 Hz				
	Input currents based on 30 minute output ratings. Other input voltages are available, for example; 380 V, 50 Hz or 600 V, 60 Hz								
NUMBER of TAPS	3	3	4	6	8				
OUTPUT VOLTAGE	OPEN CIRCUIT VOLTAGES								
	8 / 16 / 32 V @ 240/480 V, 60 Hz	Parallel	Series	Parallel	Series	Parallel	Series	Parallel	Series
	7.7 / 15.3 / 30.7 V @ 230 V, 50 Hz	6.25 V, 50 Hz	12.5 V, 50 Hz	8.3 V, 50 Hz	16.6 V, 50 Hz	10 V, 50 Hz	20 V, 50 Hz	13.3 V, 50 Hz	26.6 V, 50 Hz
	6.7 / 13.3 / 26.7 V @ 400 V, 50 Hz	7.5 V, 60 Hz	15 V, 60 Hz	10 V, 60 Hz	20 V, 60 Hz	12 V, 60 Hz	24 V, 60 Hz	16 V, 60 Hz	32 V, 60 Hz
OUTPUT CURRENT		Parallel	Series	Parallel	Series	Parallel	Series	Parallel	Series
Continuous Duty	2000 / 1000 / 500 A	1200 A	600 A	2000 A	1000 A	4000 A	2000 A	7500 A	3750 A
30 min ON / 30 min OFF	2800 / 1400 / 700 A	1700 A	850 A	3000 A	1500 A	6000 A	3000 A	10,000 A	5000 A
1 min ON / 10 min OFF	4000 / 2000 / 1000 A	2500 A	1250 A	4500 A	2250 A	9000 A	4500 A	15,000 A	7500 A
1 sec ON / 2 min OFF	8000 / 4000 / 2000 A	12,000 A	6000 A	20,000 A	10,000 A	40,000 A	20,000 A	75,000 A	37,500 A
DIMENSIONS / WEIGHT (approx) Regulator									
Length	21" (533 mm)	27 3/8" (695 mm)	29 3/8" (746 mm)	Regulator & Transformer are enclosed in 1 cabinet					
Width	28 1/8" (714 mm)	25 3/4" (654 mm)	25 3/4" (654 mm)						
Height	48 1/2" (1232 mm)	17 7/8" (454 mm)	19 3/8" (492 mm)						
Weight	325 lbs. (147 kgs)	165 lbs (75 kgs)	200 lbs (91 kgs)						
Transformer									
Length	20" (508 mm)	28 1/4" (718 mm)	30 1/4" (768 mm)	Regulator & Transformer are enclosed in 1 cabinet					
Width	28 1/8" (714 mm)	26 5/8" (676 mm)	26 5/8" (676 mm)						
Height	48 1/2" (1232 mm)	27" (686 mm)	27" (686 mm)						
Weight	375 lbs. (170 kgs)	300 lbs. (196 kgs)	350 lbs. (159 kgs)						
Total Unit (Regulator and Transformer)									
Length	Regulator & Transformer are 2 stand-alone cabinets	28 1/4" (718 mm)	30 1/4" (768 mm)	45" (1143 mm)	45" (1143 mm)				
Width		26 5/8" (676 mm)	26 5/8" (676 mm)	27" (686 mm)	27" (686 mm)				
Height		44 1/4" (1124 mm)	45 1/4" (1149 mm)	46" (1168 mm)	46" (1168 mm)				
Weight		465 lbs. (211 kgs)	550 lbs. (249 kgs)	1125 lbs. (512 kgs)	1300 lbs. (590 kgs)				
SHIPPING SIZE									
Length	51" (1295 mm)	41" (1041 mm)	41" (1041 mm)	59" (1499 mm)	59" (1499 mm)				
Width	36" (914 mm)	33" (838 mm)	33" (838 mm)	36" (914 mm)	36" (914 mm)				
Height	57" (1448 mm)	68" (1727 mm)	68" (1727 mm)	70" (1778 mm)	70" (1778 mm)				
Weight	1030 lbs. (467 kgs)	780 lbs (354 kgs)	840 lbs (381 kgs)	1400 lbs (635 kgs)	1620 lbs (735 kgs)				
CABLES INCLUDED									
Output Leads 4/0 (107 m ²)	5' (1.5 m) (8)	5' (1.5 m) (8)	5' (1.5 m) (8)	n/a	n/a				
Continuity Sense/ Auxiliary Contact Leads	5' (1.5 m) (2)	5' (1.5 m) (2)	5' (1.5 m) (2)	5' (1.5 m) (2)	5' (1.5 m) (2)				

**Output Stabs for connection to the circuit breaker under test
(for models HC12C, HC20C, HC40C, HC75C only)**



HCSS1



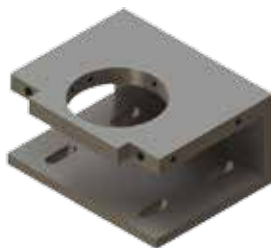
HCSS2



HCSS3



HCSS4



HCSS5



HCSS6



HCSS7



HCSS8

	Model #	Connection to Circuit Breaker
INCLUDED	HCSS1	.5" (12.7 mm) thick blade
	HCSS2	.75" (19.05 mm) thick blade
OPTIONAL	HCSS3	3.15" (80 mm) clamp diameter
	HCSS4	3.5" (88.9 mm) diameter
	HCSS5	3.15" (80 mm) clamp diameter
	HCSS6	2.25" (57.15 mm) diameter
	HCSS7	.5" (12.7 mm) thick blade 10.5" (266.7 mm) long
	HCSS8	2" (50.8 mm) diameter

Options

- Multiple-tap input Auto Transformer for 208, 240, 480, 575 operation – 480 V or 575 V units
- Stab Plate Adapter for Series Output Connection
- External Printer
- Heavy-duty, coated-canvas, Protective Dust Cover (included with models HC12C and HC20C)
- DC circuit breaker testing systems available
- ISO17025 calibration



**PHENIX
TECHNOLOGIES**

WORLD HEADQUARTERS

Phenix Technologies, Inc.
75 Speicher Drive
Accident, MD 21520 USA
Ph: +1.301.746.8118
Fx: +1.301.895.5570
Info@phenixtech.com

BRANCH OFFICES

Phenix Systems AG
Riehenstrasse 62A, 4058 Basel, Switzerland
Ph: +41.61.383.2770, Info@phenixsystems.com

Phenix Asia
Zhong Cheng Rd, Sec 1, No 177, 2F, Taipei 11148 Taiwan
Ph: +886.2.2835.9738, Fx: +886.2.2835.9879, Info@phenixasia.com

ISO
9001:2008
Compliant

