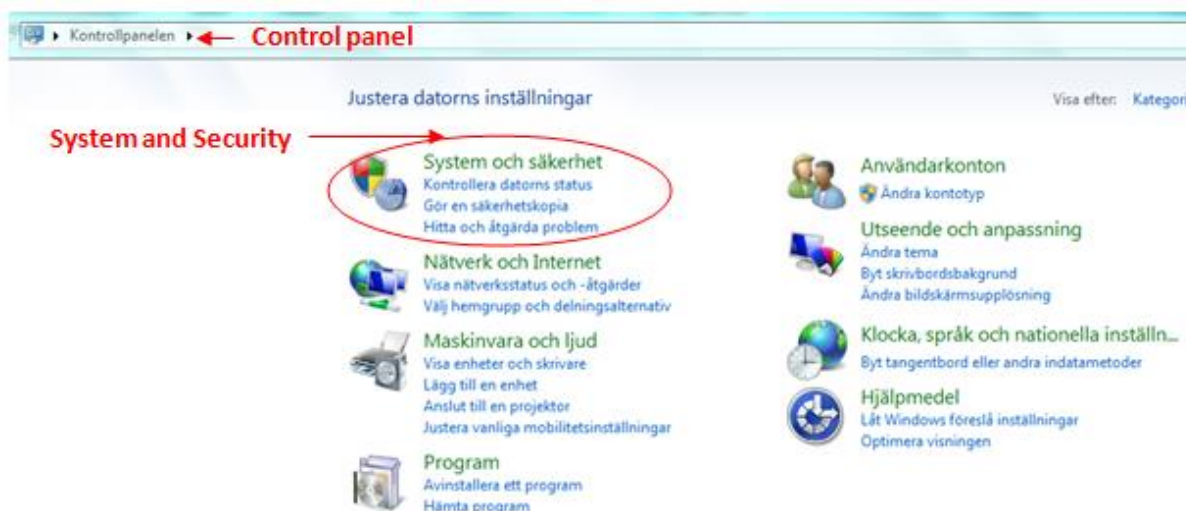
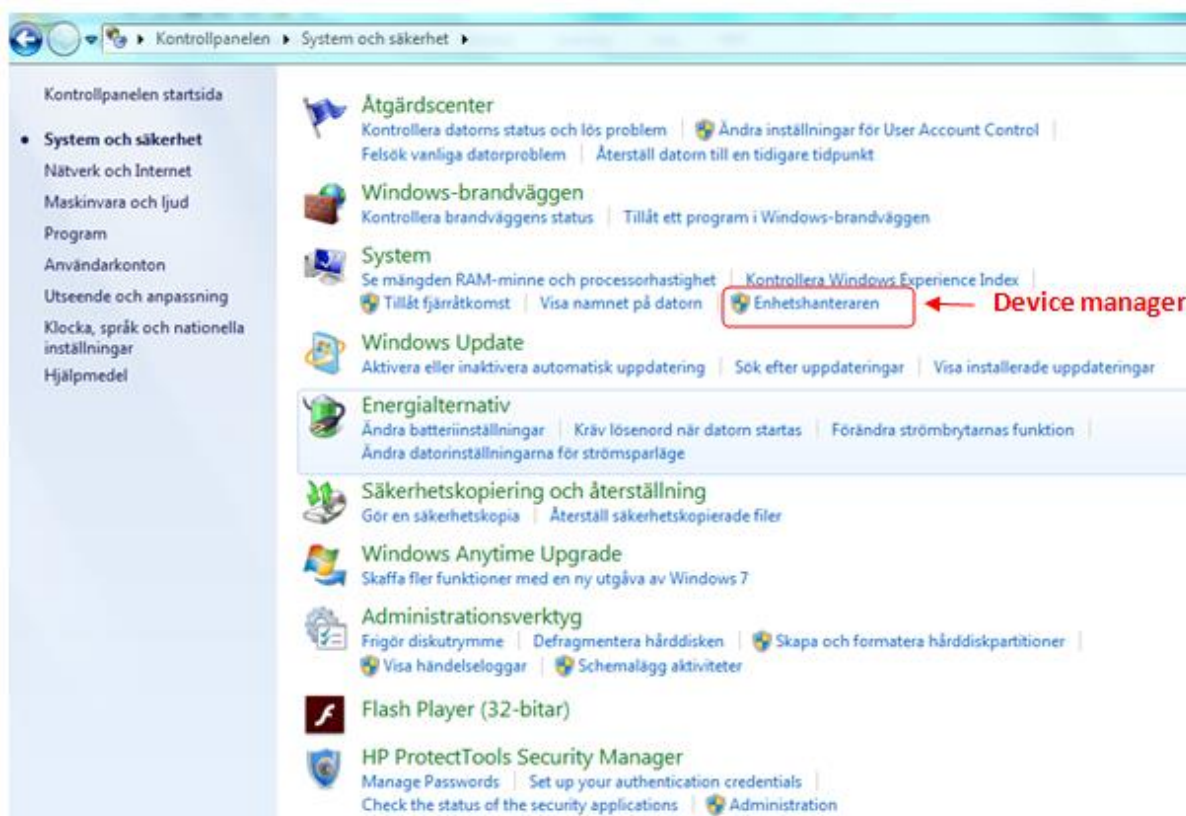


Guidelines to OPEN a new COMPORT to connect Rotronic probe to MULTIPOINT

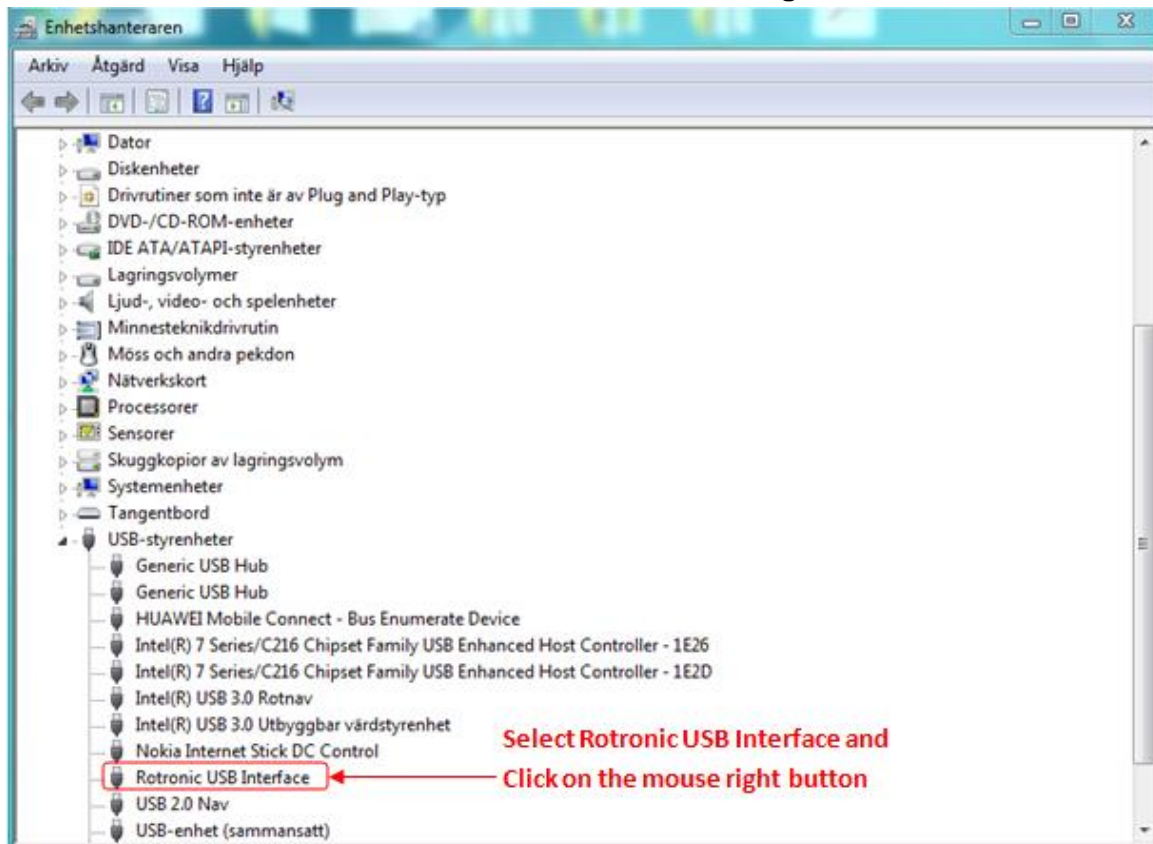
1. Open System and Security in Control panel, depending on the operative system it might be called just System



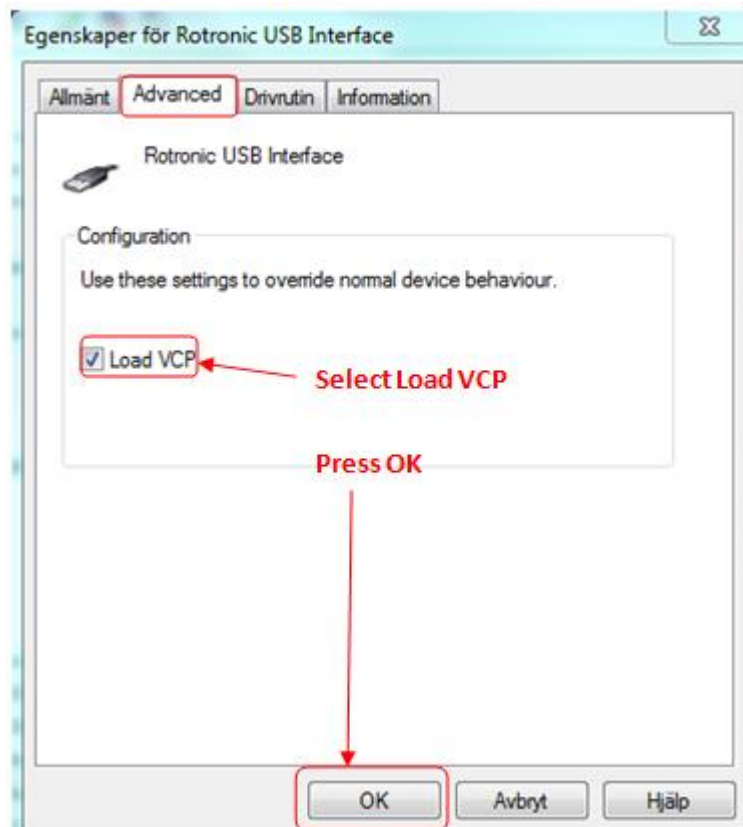
2. Open Device manager in System and Security / System



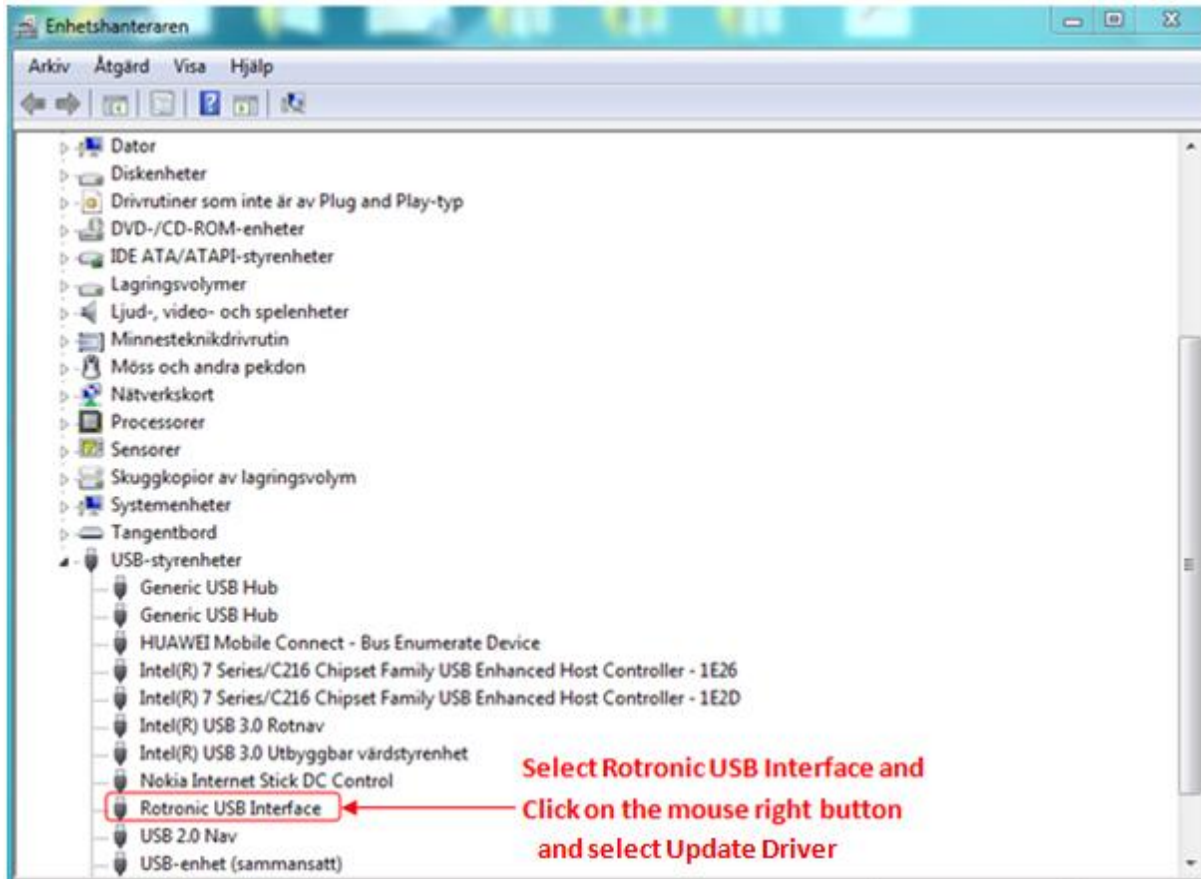
3. Select Rotronic USB Interface on the Device Manager menu



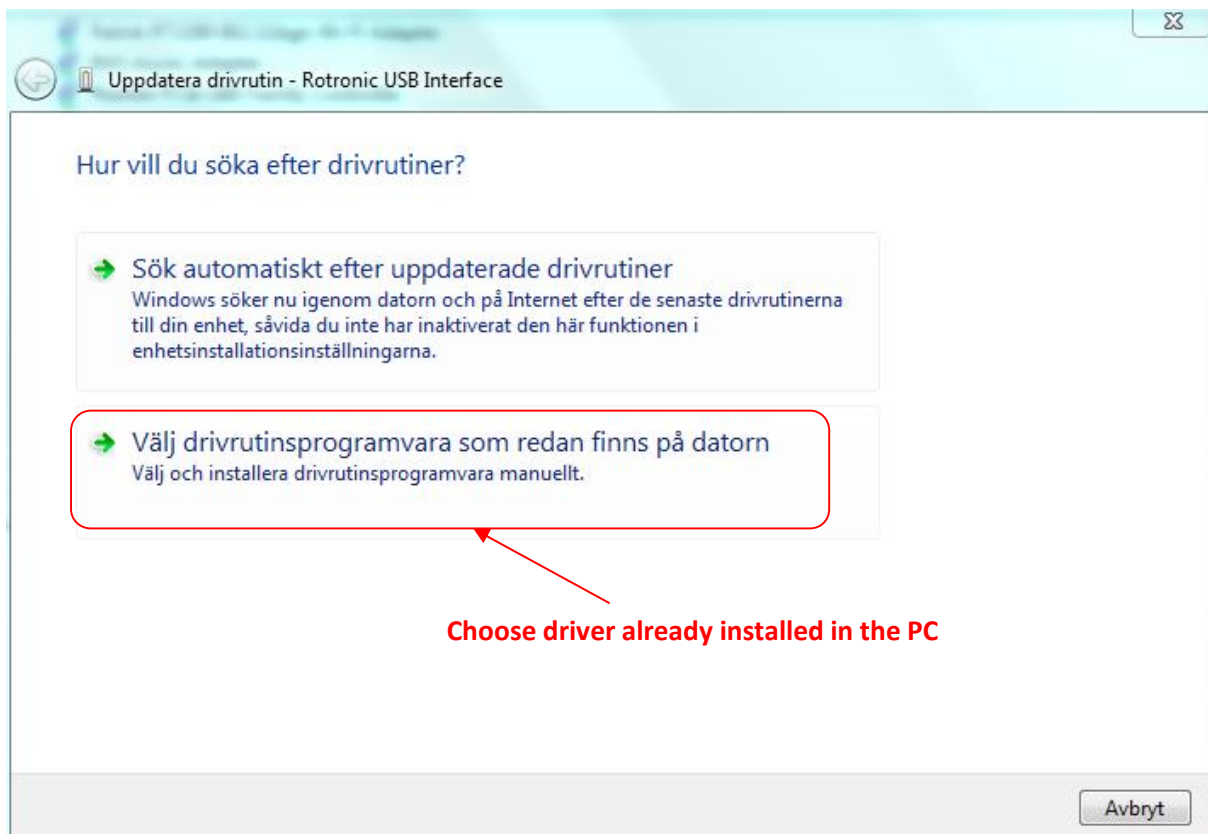
4. Select Advanced in Properties

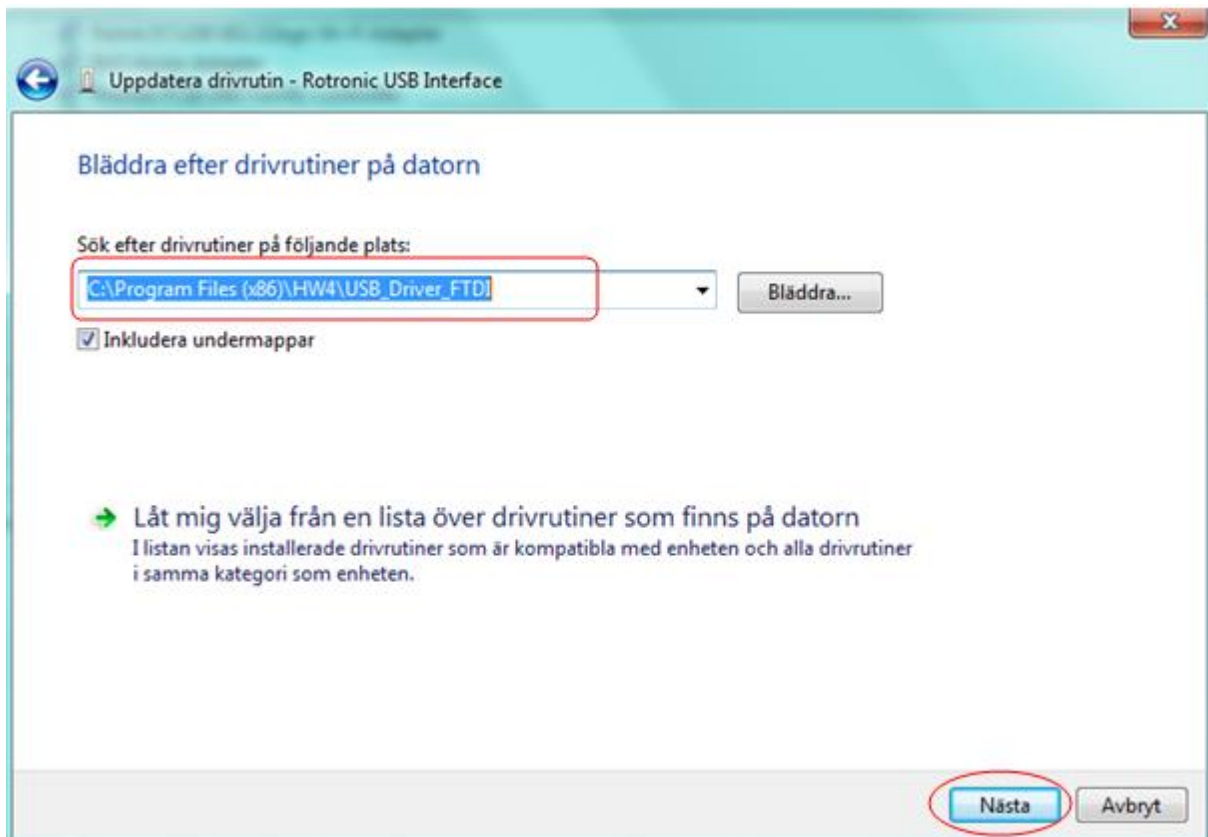


5. Update Driver

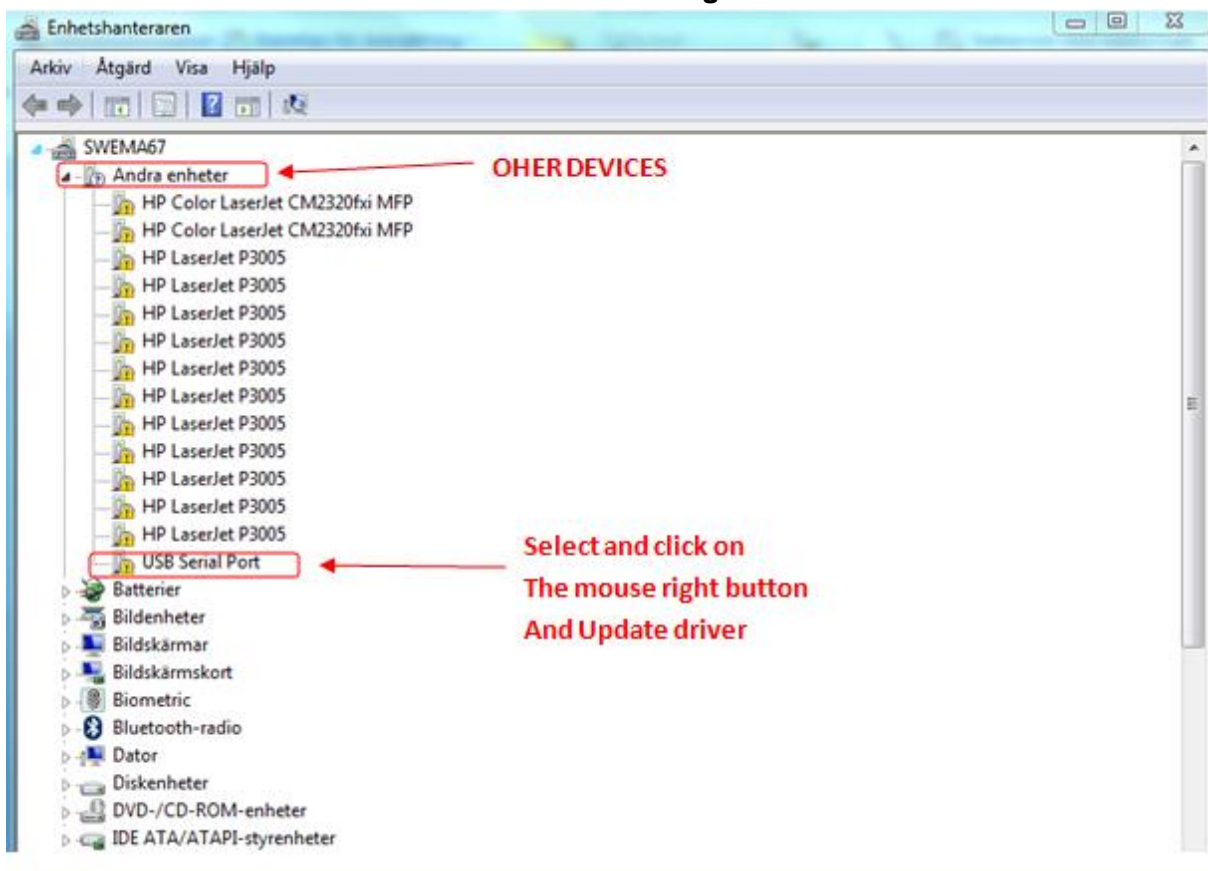


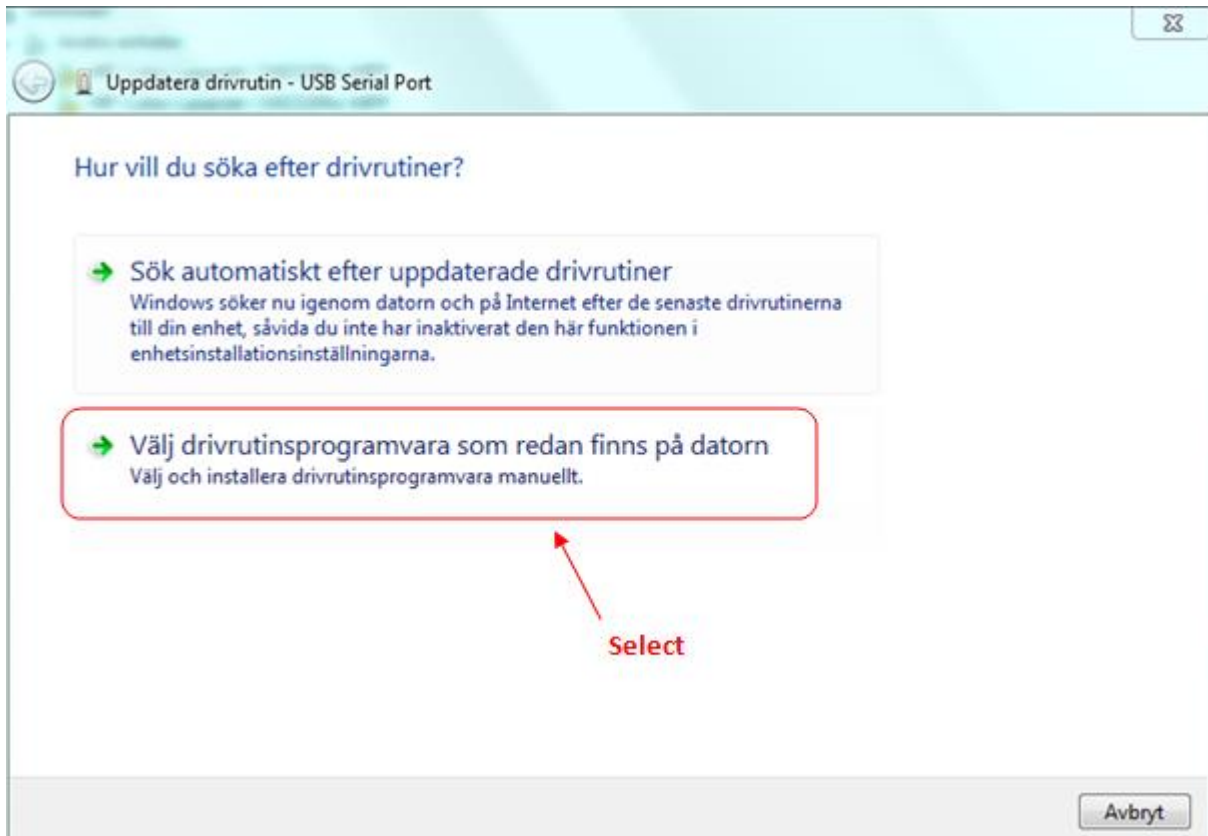
6. Search Driver



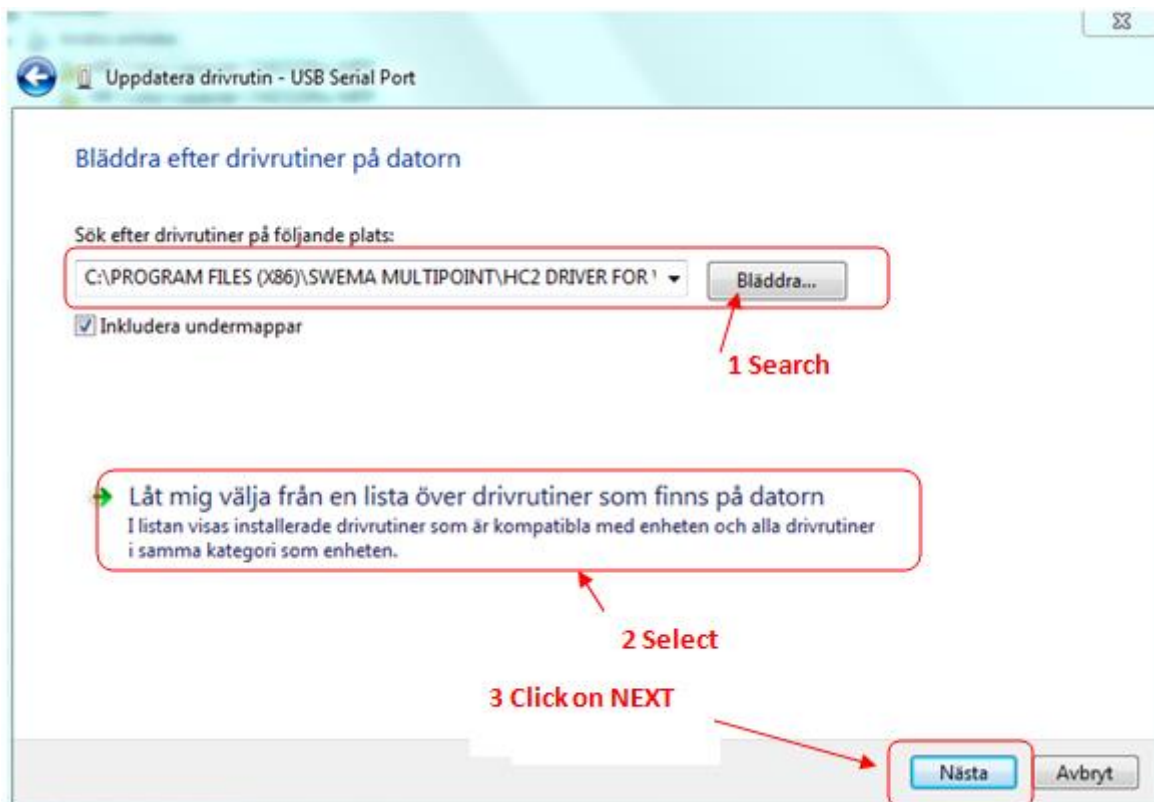


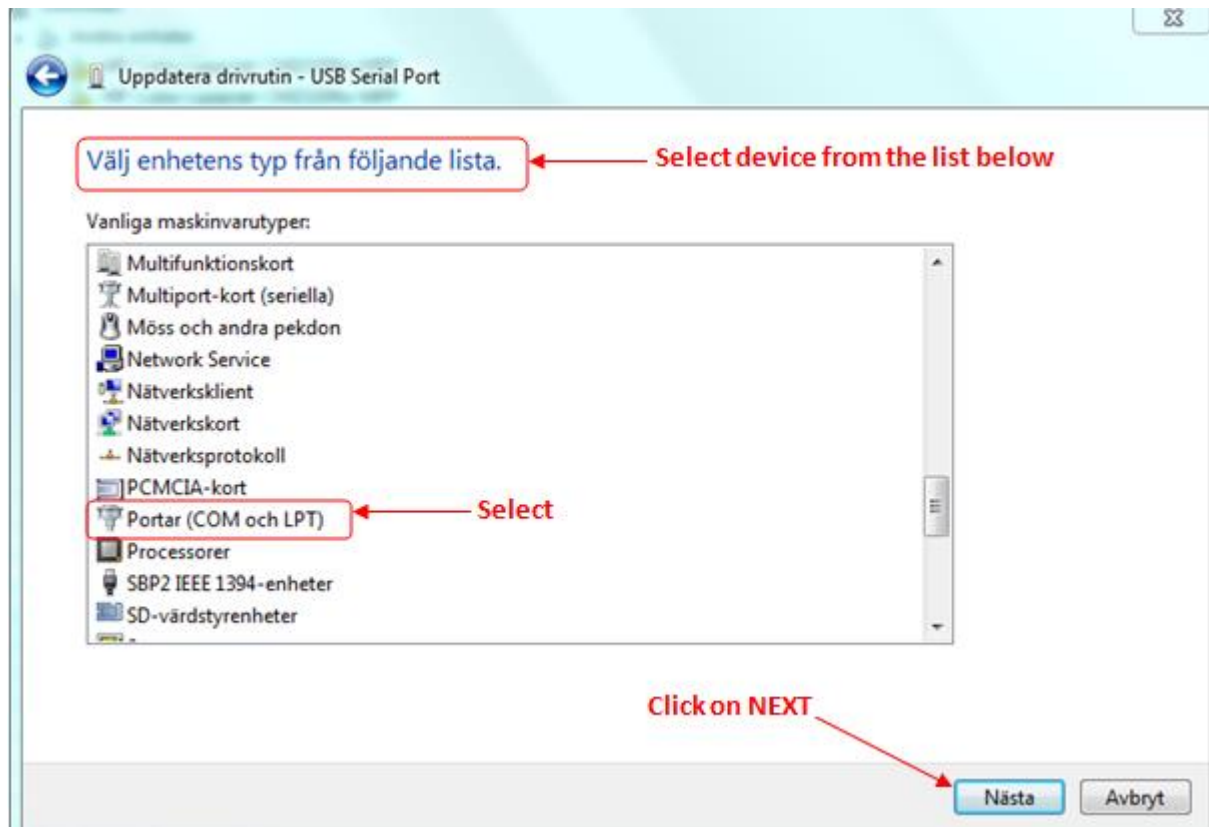
7. Select 'Other Devices' on the Device Manager menu



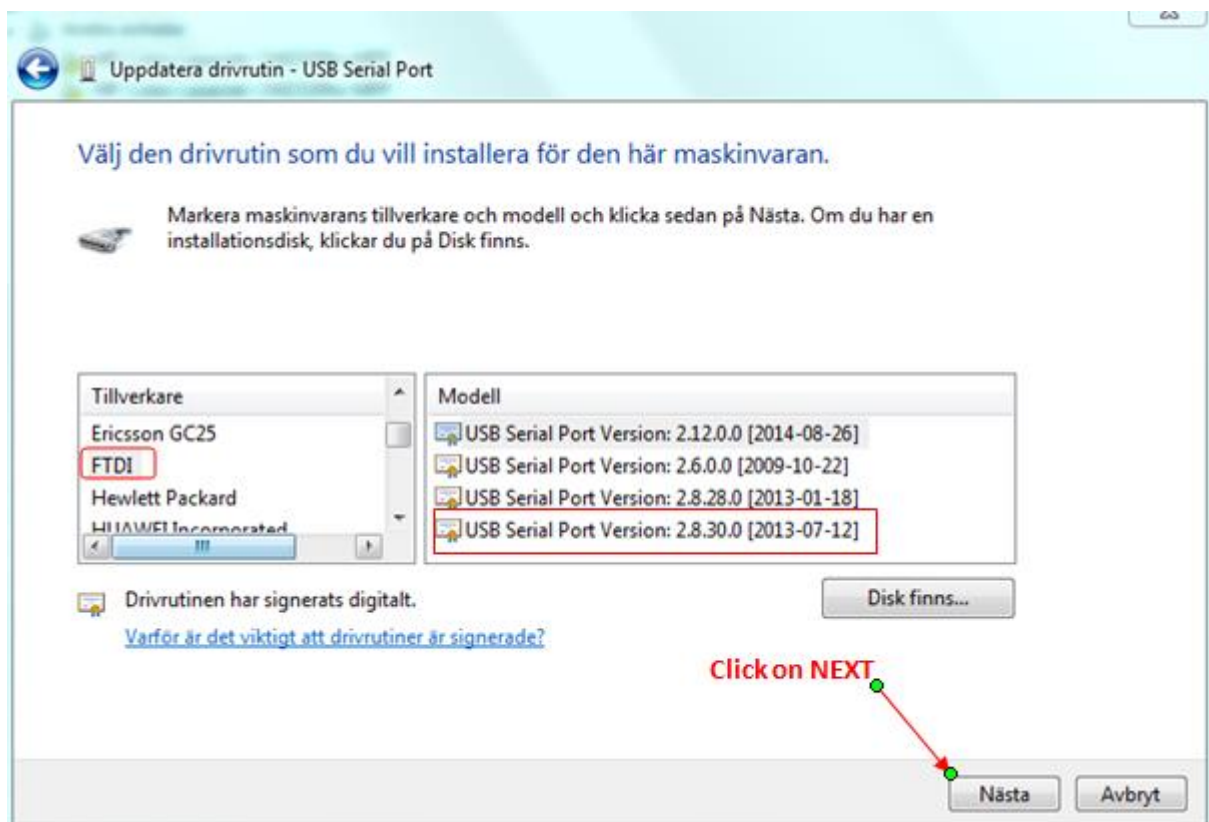


8. Search Driver, It can be for Windows 8 if that is the operative system used in the PC

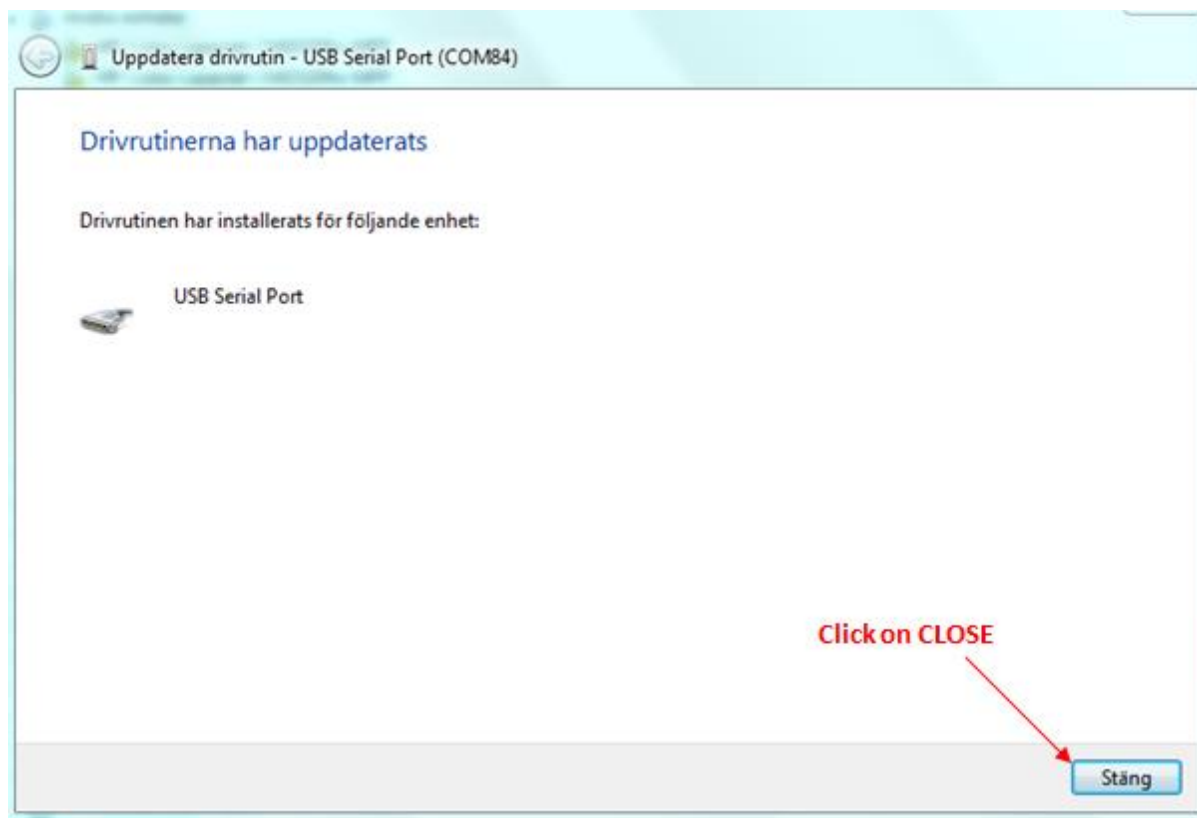




9. Install ANYWAY **IGNORE THE WARNING**



Please note in the list of Model, it might be only one version of the USB Serial Port Version or like in the picture above 4 different versions. Please choose the latest

10. Close the window when the Driver is installed**11. Now there is a new COMPort to connect Rotronic Probe and measure with MultiPoint**