

B SERIES

Compact and easy-to-use thermal camera for daily operation



SuperIR™



VISIT OUR WEBSITE

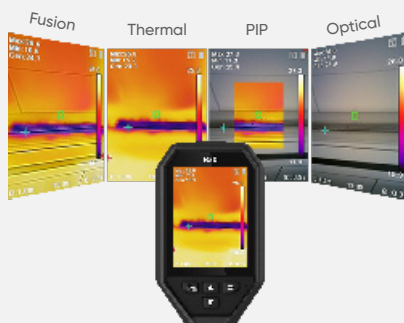
Enhanced Image Quality with SuperIR

Powered by HIKMICRO SuperIR image enhancement technology, it upscales the resolution of captured thermal images to 320 x 240 (76,800 Pixels), B20S up to 640 x 480 (307,200 pixels).



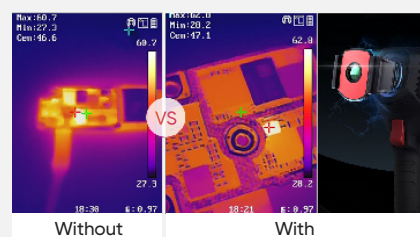
Multiple Image Modes

Fusion, Thermal, PIP and Visual modes to suit your preferred view. (B11, B20, B20S only)



Innovative Macro Mode

Using a clip-on macro lens, the B series cameras can see details as small as 500 microns and allow you to take accurate temperature readings on small objects, such as components on printed circuit boards or assemblies.



3.2" Color LCD

View the details of your images on the large, class-leading LCD screen.



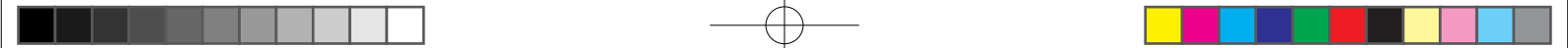
Efficient Temperature Measurement

Track the temperature of Center, Hot, Cold spot and 3 Custom spots automatically.

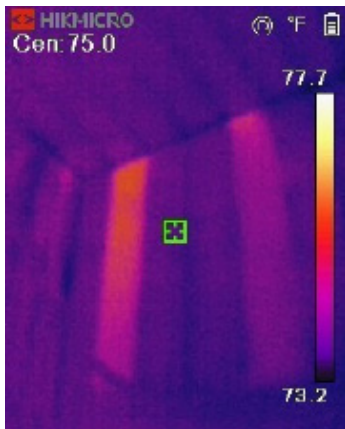


Wi-Fi Connectivity

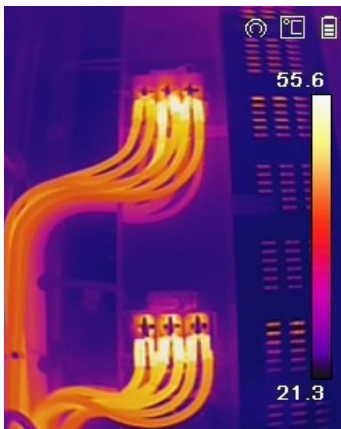
Connect to mobile devices via built-in Wi-Fi and the HIKMICRO Viewer App to quickly share your images.



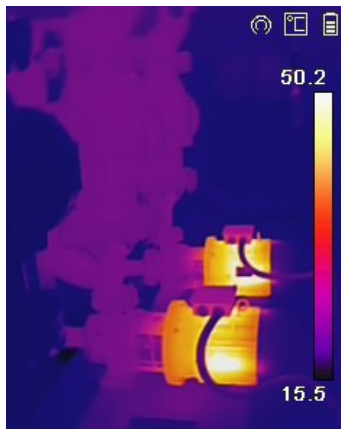
APPLICATIONS



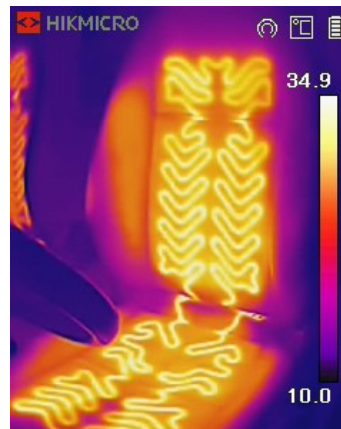
Building Envelope



Electrical Cabinet

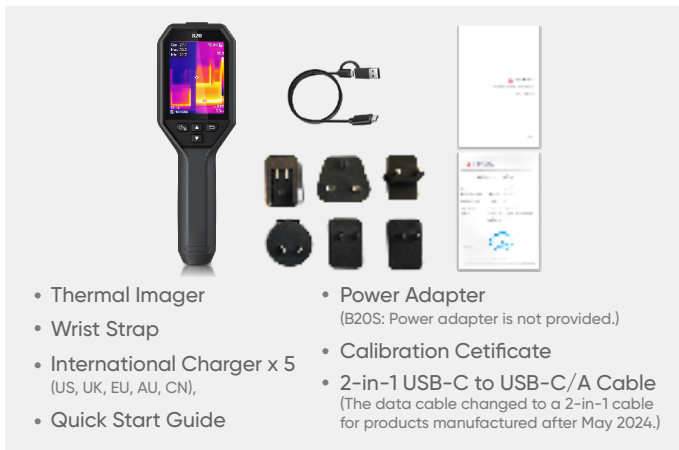


Mechanical Inspection



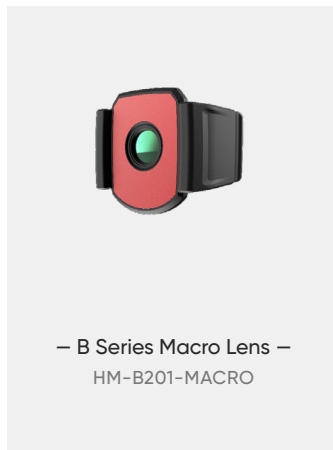
Automotive Inspection

WHAT'S IN THE BOX

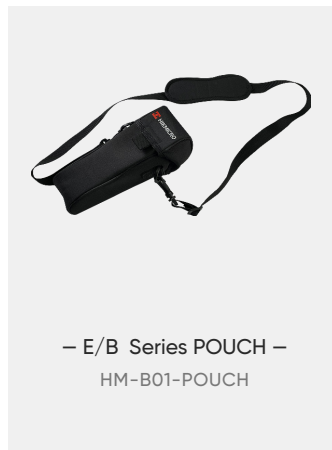


- Thermal Imager
- Wrist Strap
- International Charger x 5 (US, UK, EU, AU, CN),
- Quick Start Guide
- Power Adapter (B20S: Power adapter is not provided.)
- Calibration Certificate
- 2-in-1 USB-C to USB-C/A Cable (The data cable changed to a 2-in-1 cable for products manufactured after May 2024.)

OPTIONAL ACCESSORIES



— B Series Macro Lens —
HM-B201-MACRO



— E/B Series POUCH —
HM-B01-POUCH

Camera Highlights		B11	B21L	B20	B20S
Infrared Image	IR Resolution	192 × 144 (27,648 pixels)	256 × 192 (49,152 pixels)		
	SuperIR	Yes, on Captured Thermal Images			Yes, on captured images and live view
	NETD	<0.04°C / NETD< 40mK			
	Image Frequency	25 Hz			
	Field of View (FOV)	27.8° × 37.2°	37.2° × 50.0°	37.2° × 50.0°	
	Focus Mode	Focus Free			
Image Display	Visual Camera	1600 × 1200 (2 MP)	N/A	1600 × 1200 (2 MP)	
	Image Modes	Thermal/Visual/PIP/Fusion	Thermal	Thermal/Visual/PIP/Fusion	
	Display	240 × 320 Resolution, 3.2"LCD Screen			480 × 640 Resolution, 3.2" LCD Screen
Measurement and Analysis	Object Temperature Range	-20 °C to 550 °C (-4°F to 1022°F)			
	Accuracy	Max (±2°C/3.6°F, ±2%), for the ambient temp. 15°C to 35 °C (59 °F to 95 °F) and object temp. above 0 °C (32°F)			
Data Storage and Communication	Storage Media	Built-in 16 GB flash memory			
	File Format	Radiometric JPEG			
	Storage Capacity	Up to 90,000 images			
General	Durability	2m (6.56 ft) drop test, IP54			
	Wi-Fi	802.11 b/g/n (2.4GHz)			
	Led Flashlight	Yes	N/A	Yes	
	Laser Pointer	N/A	Yes	N/A	
	Battery Operating Time	Approx. 6 hours			

