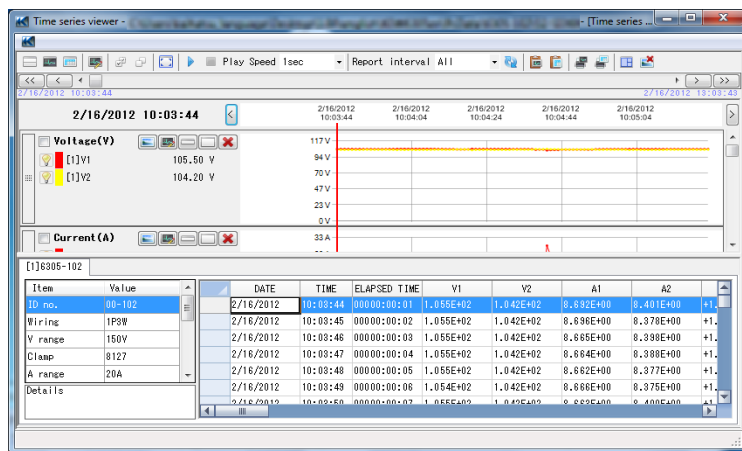


Help Manual for KEW Windows for KEW6305



Contents

1. Introduction
2. Environmental requirements
3. Getting started
 - 3-1 Start KEW Windows for KEW6305 (while KEW6305 is being connected)
 - 3-2 Start KEW Windows for KEW6305 (while KEW6305 is NOT connected)
4. Data download
 - 4-1 Download KEW6305 internal file to PC
 - 4-2 Download the data from external memory to PC
5. Data analysis
 - 5-1 Analysis procedure for KEW6305 internal data
 - 5-2 Analysis procedure for downloaded data
6. Items displayed at data analysis
 - 6-1 Items displayed on graph
 - 6-2 Items displayed on list
7. Functions available at data analysis
8. Graph display change
 - 8-1 Graph color change
 - 8-2 Date interval change (Zoom-in)
 - 8-3 Date Interval change (Zoom-out)
 - 8-4 Vertical ticks on graph (Zoom-in)
 - 8-5 Display graph
 - 8-6 Hide graph
 - 8-7 Display selected parameters on graph
 - 8-8 Hide selected parameters on graph
9. Instrument setting
 - 9-1 Instrument setting
 - 9-2 Save KEW6305 settings
 - 9-3 Create setting file
 - 9-4 Reset KEW6305
 - 9-5 Delete setting file
10. Functions for instrument setting
11. Synchronous measurement
 - 11-1 Start synchronous measurement
 - 11-2 Stop synchronous measurement
12. Monitoring
 - 12-1 Start monitoring
 - 12-2 Stop monitoring

13. Environmental setting

- 13-1 Change folder for saving instrument settings
- 13-2 Change folder for saving the downloaded data
- 13-3 Change title of parameter to be displayed
- 13-4 Change graph name
- 13-5 Change Cursor stop position at auto-play
- 13-6 Change refresh rate for synchronous and monitoring measurements
- 13-7 Change number of displayed data during synchronous and monitoring measurements
- 13-8 Save the environmental settings
- 13-9 Load the environmental settings

14. Details of environmental setting items

- 14-1 Save to: Tab
- 14-2 Parameter Tab
- 14-3 Graph name Tab
- 14-4 Auto-play Tab
- 14-5 Real-time measurement Tab
- 14-6 Import/ Export/ Initialize

15. Print

- 15-1 Print procedure [Graph]
- 15-2 Print procedure [List]
- 15-3 CSV output procedure
- 15-4 Print procedure [Report]

16. Functions available at report/ list output

17. Measured data import

- 17-1 Procedure 1
- 17-2 Procedure 2

18. Troubleshooting

1. Introduction

KEW Windows for KEW6305 (hereinafter, referred to as "application" in this manual) is the special application for KEW6305. This application can analyze the measured data, download the recorded data and also configure KEW6305 unit.

Basic functions of this application are as follows.

- Settings
 - Can make settings of measurement time, clamp sensor, voltage range and current range for each measurement mode of KEW6305. (These settings can also be done on KEW6305 unit.)
 - Settings done on KEW6305 can be checked on this application.
 - Can send updated settings from PC to the instrument and change its settings.

- Download
 - KEW6305 internal saved data can be transmitted to PC.
 - Data saved on the external memory, such as SD cards, can be transmitted to PC.

- Synchronous measurement
 - Starts measurement by using the application and receives data at the preset intervals while KEW6305 is performing measurement and displays the result on PC.

- Monitoring
 - Receives data at the preset intervals while KEW6305 is recoding measurement data and displays the result on PC. Remote checking of measurements is possible without accessing KEW6305.

- Data display
 - Measured results in KEW6305 can be displayed in graphic or numeric form.
 - Can zoom out/ in graph by clicking any point along a graph.

- Print
 - Can print out graphs and lists.

2. Environmental requirements

System requirements:

- CPU : Pentium 4 1.6GHz or more
- Memory : 512Mbyte or more (for Windows XP)
1Gbyte or more (for Windows 7/ Vista)
- OS : Windows7(32bit/64bit)/Windows Vista/Windows XP
- HDD : 1Gbyte or more
(including size of .NET Framework redistributable package)
(Hard-disk space required)
- CD or DVD drive : For installing applications
- Display : 1024 x 768 dots, 65536 colors or more

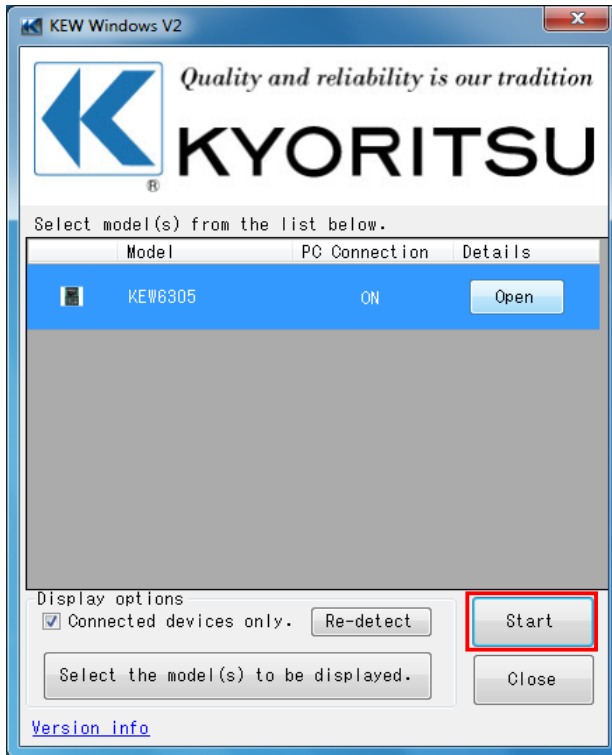
Recommended system:

Pentium processor of 2GHz or more

3. Getting started

3-1 Start KEW Windows for KEW6305 (while KEW6305 is being connected)

1. Start KEW WindowsV2 from the desktop shortcut or from Start menu -> All programs -> KEW -> KEW WindowsV2.
2. Select KEW6305, and click "Start".



When KEW6305 is not displayed on the window while KEW6305 is being connected with PC via USB or Bluetooth, click "Re-detect".

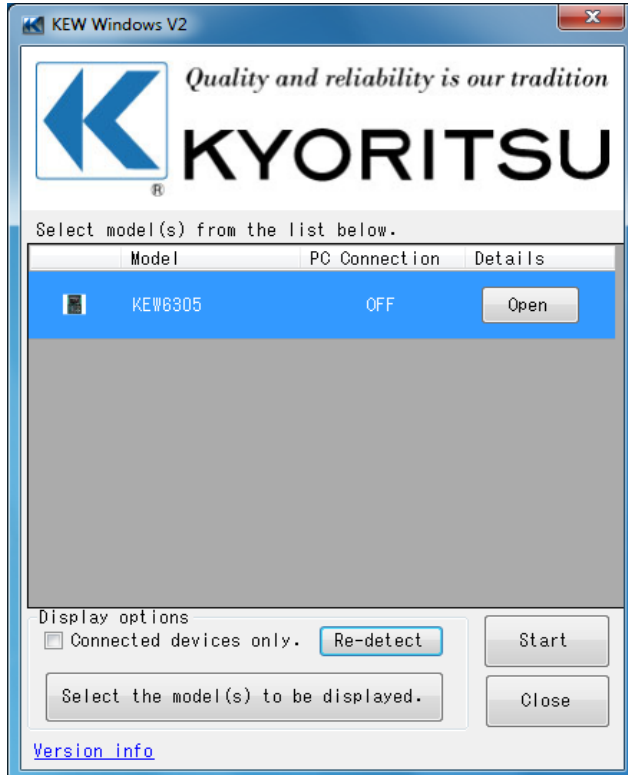
If KEW6305 is not displayed after clicking "Re-detect", please see "18. Troubleshooting" and find causes and solutions.

3-2 Start KEW Windows for KEW6305 (while KEW6305 is NOT connected)

1. Start KEW WindowsV2 from the desktop shortcut or from Start menu -> All programs -> KEW -> KEW WindowsV2.



2. Clear the "Connected devices only" check box, and click "Re-detect".

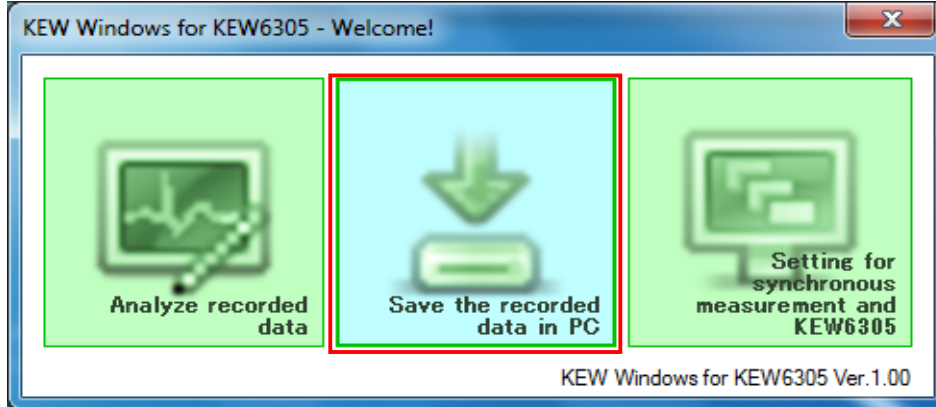


Click "Start" when KEW6305 is detected and displayed.

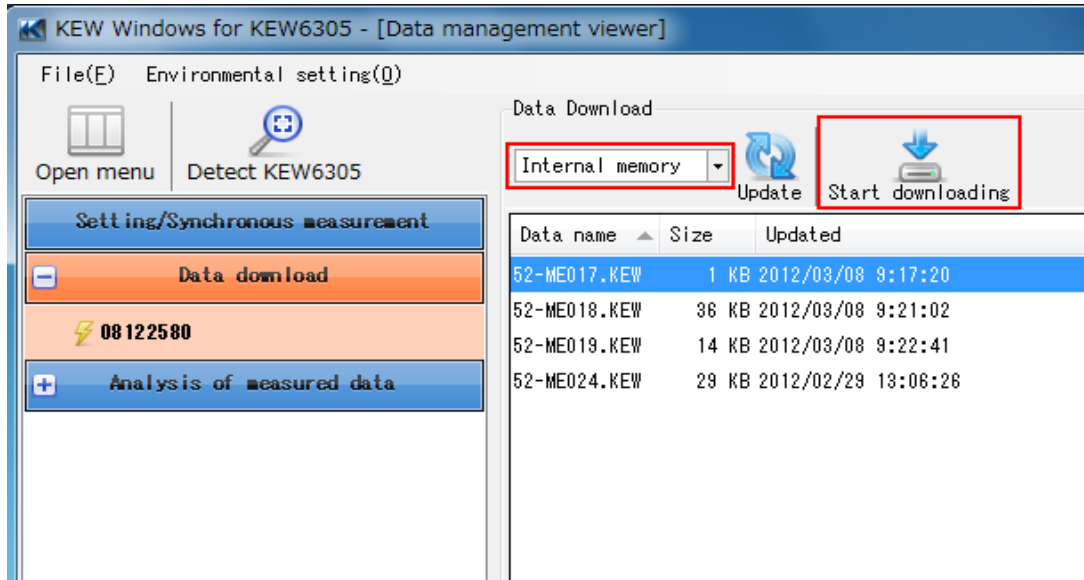
4. Data download

4-1 Download KEW6305 internal files to PC

1. Select "Save the recorded data in PC" on the Menu window.
Menu window will appear when starting the application or click "Open menu" on Data management viewer.



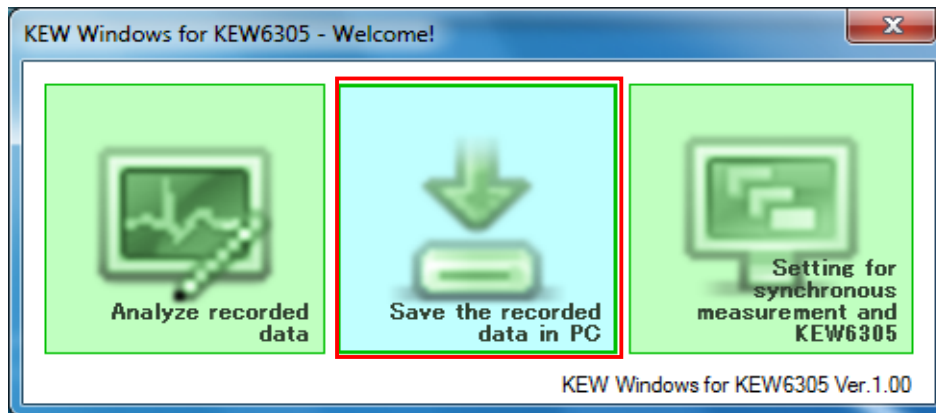
2. Select any serial no. listed in the tree view, below the "Data download", on the left side of the window.
Serial no. is marked on the backside of KEW6305 unit.
3. Select the source from which you want to download the data. (Internal memory)
4. Select the file you want to download.
5. Click "Start downloading" to start downloading.



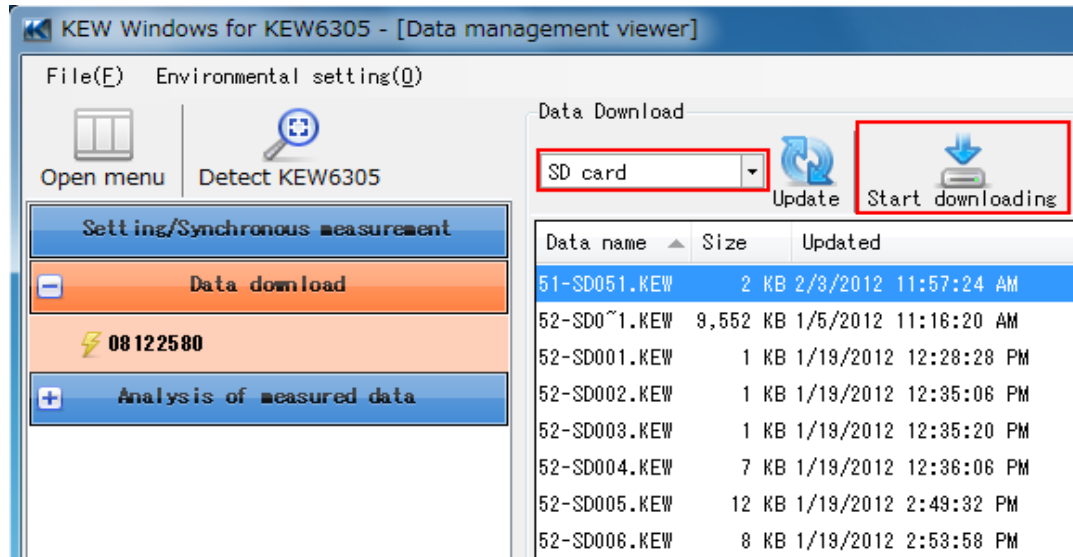
Download window will be closed when downloading process completes.

4-2 Download the data from external memory to PC

1. Select "Save the recorded data in PC" on the Menu window.
Menu window will appear when starting the application or click "Open menu" on Data management viewer.



2. Select any serial no. listed in the tree view, below the "Data download", on the left side of the window.
Serial no. is marked on the backside of KEW6305 unit.
3. Select the source from which you want to download the data. (SD card)
4. Select the file you want to download.
5. Click "Start downloading" to start downloading.

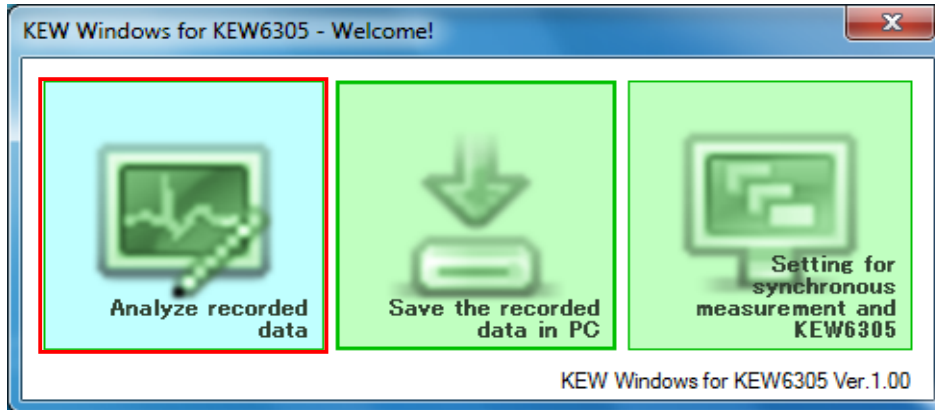


Download window will be closed when downloading process completes.

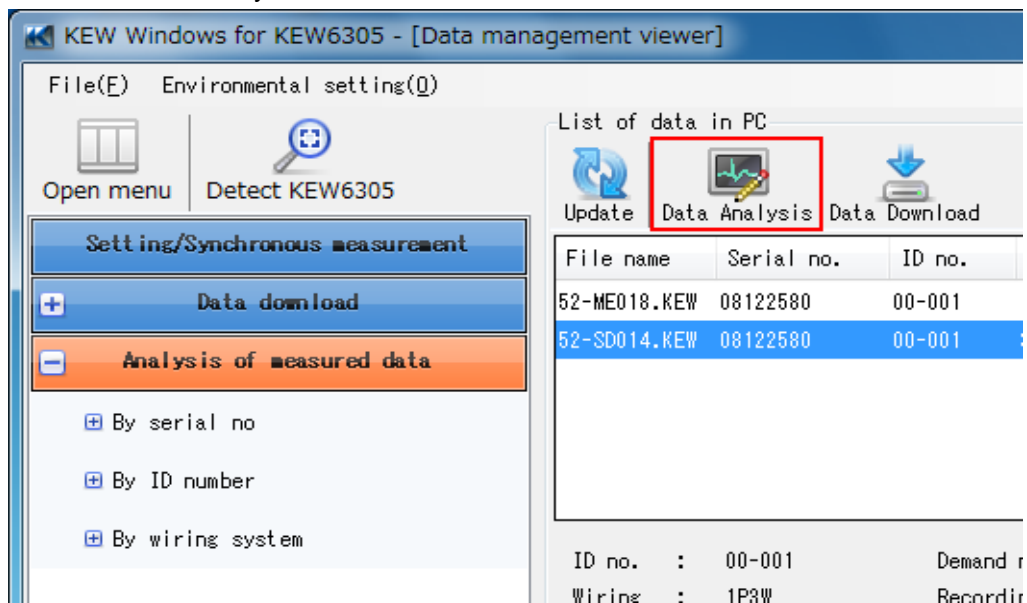
5. Data analysis

5-1 Analysis procedure for KEW6305 internal data

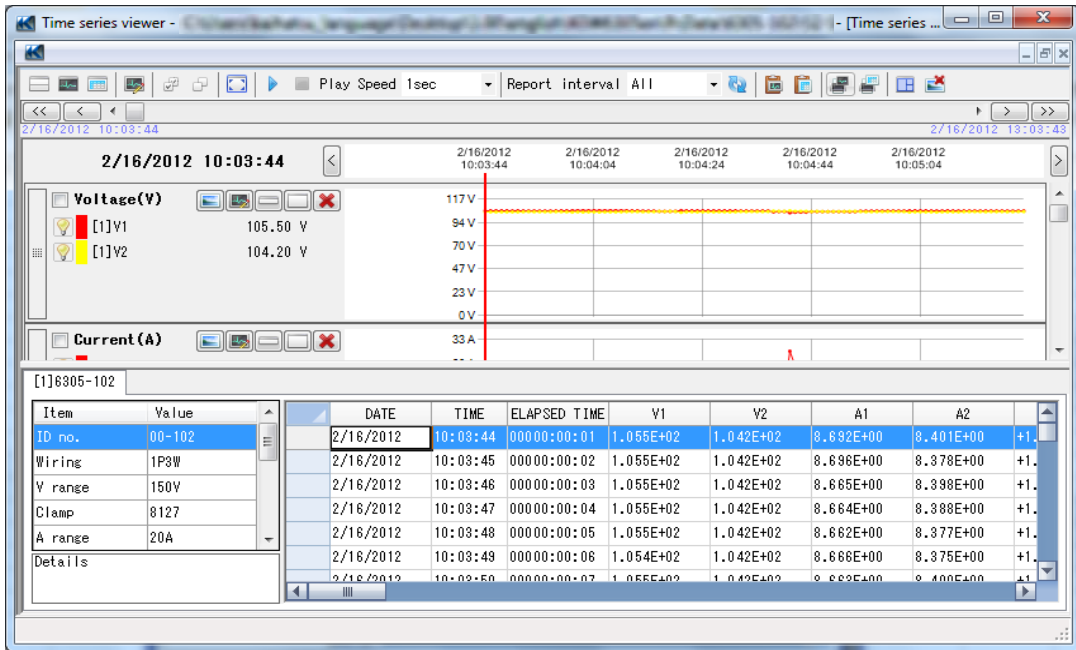
1. Select "Analyze recorded data" on the Menu window.
Menu window will appear when starting the application or click "Open menu" on Data management viewer.



2. Select the file which you want to analyze.
3. Click the "Data Analysis" button.

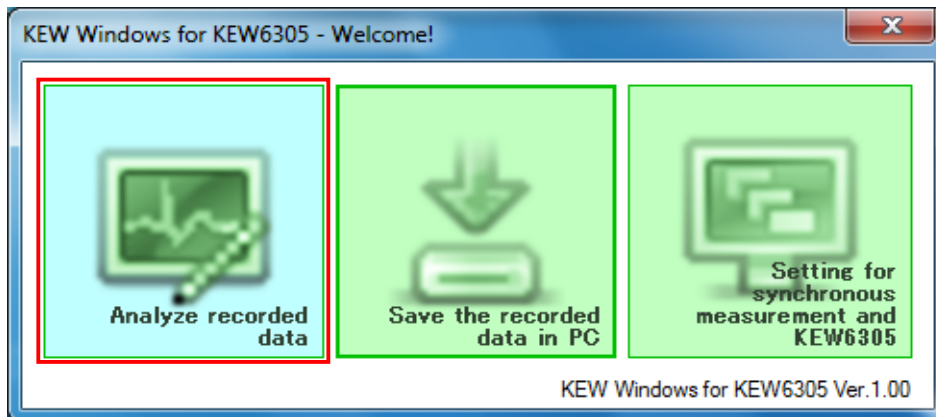


Then the data contained in the selected file will be displayed.

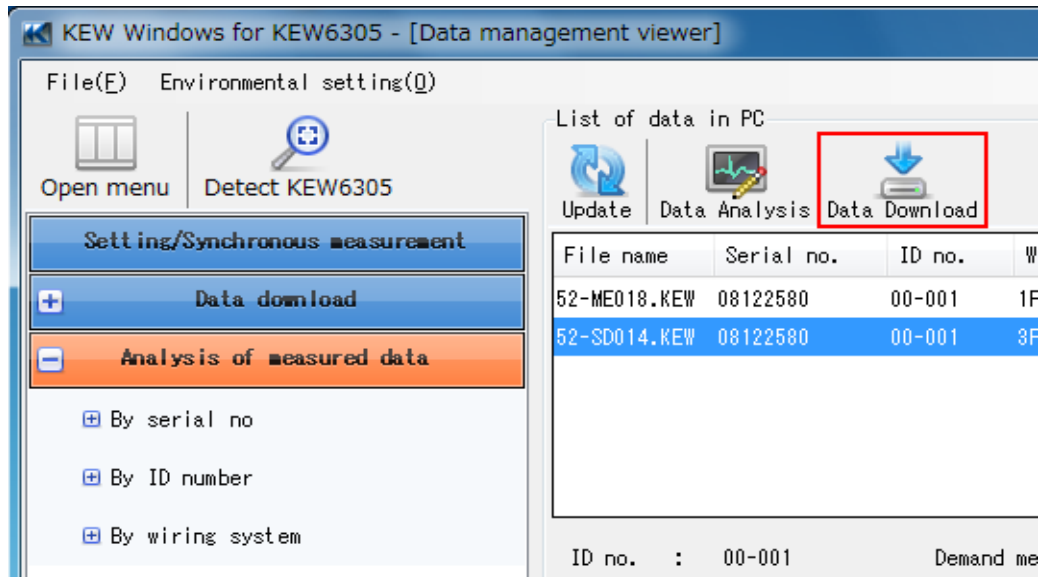


5-2 Analysis procedure for downloaded data

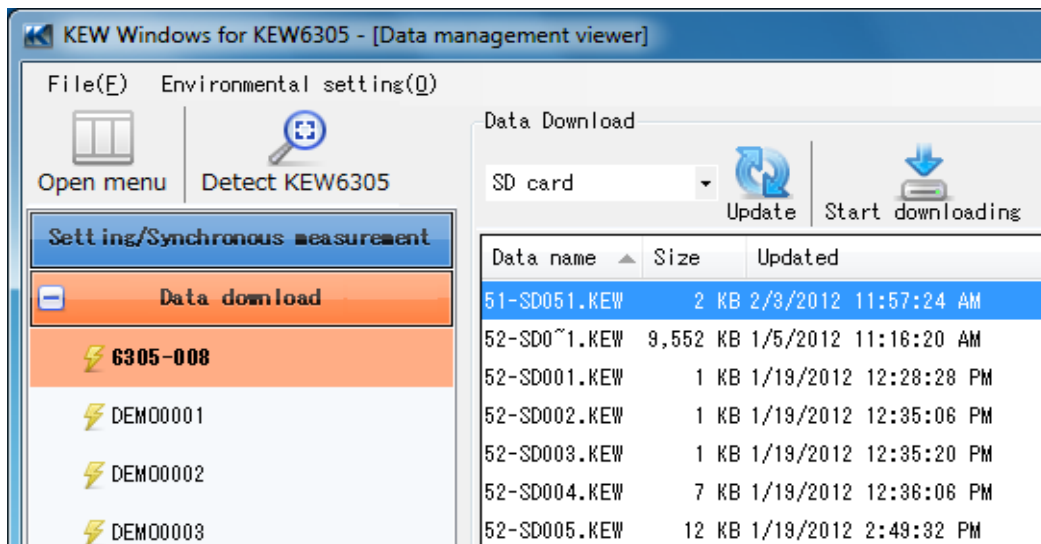
1. Select "Analyze recorded data" on the Menu window.
Menu window will appear when starting the application or click "Open menu" on Data management viewer.



2. Select "Data download".

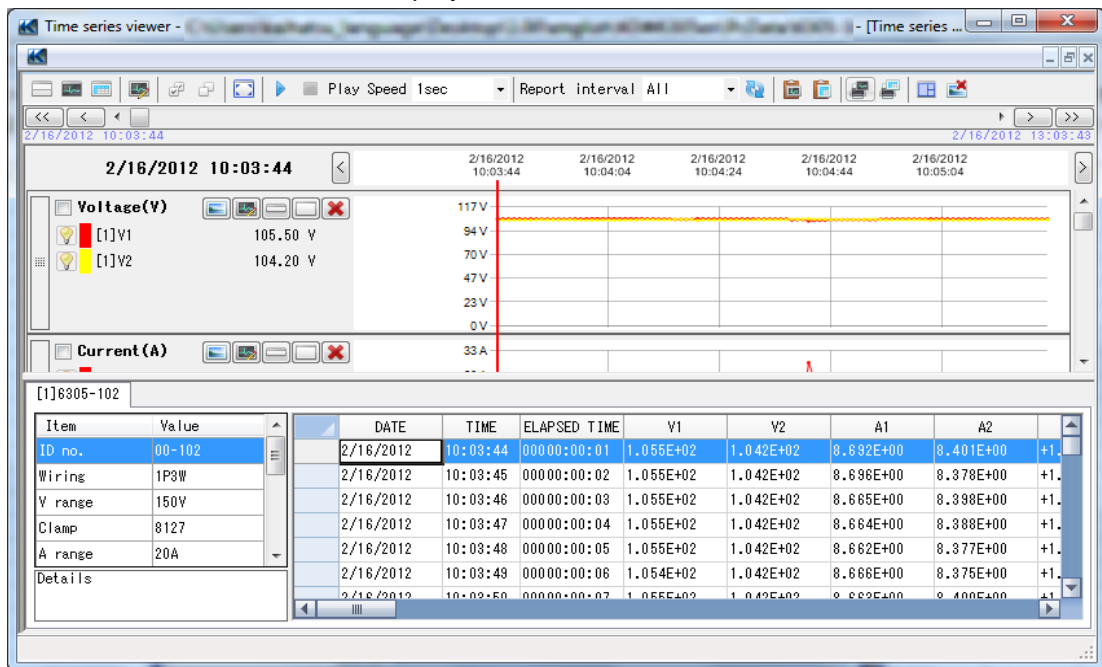


3. Select any serial no. listed in the tree view, below the "Data download", on the left side of the window.
Serial no. is marked on the backside of KEW6305 unit.



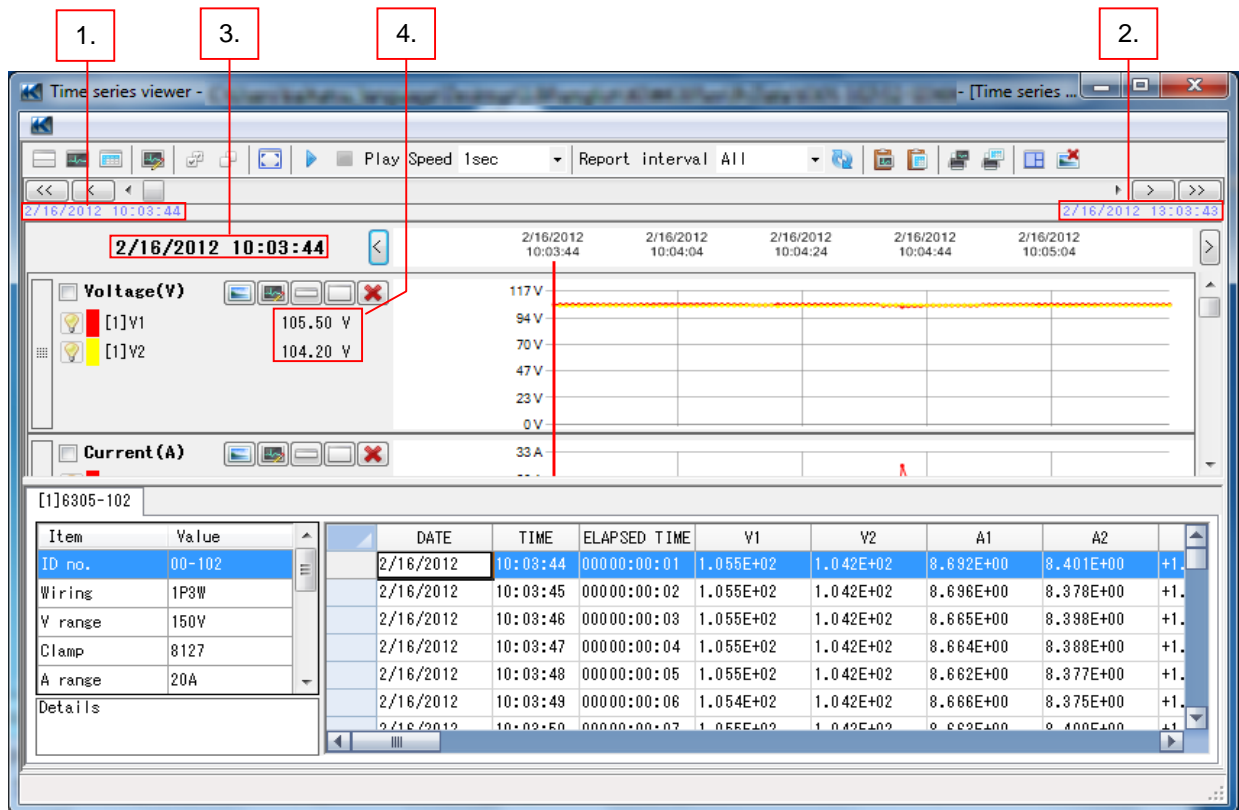
4. Select the source from which you want to download the data.
(SD card or Internal memory)
5. Select the file you want to download.

- Click "Start downloading" to start downloading the data.
The downloaded data will be displayed when download window is closed.



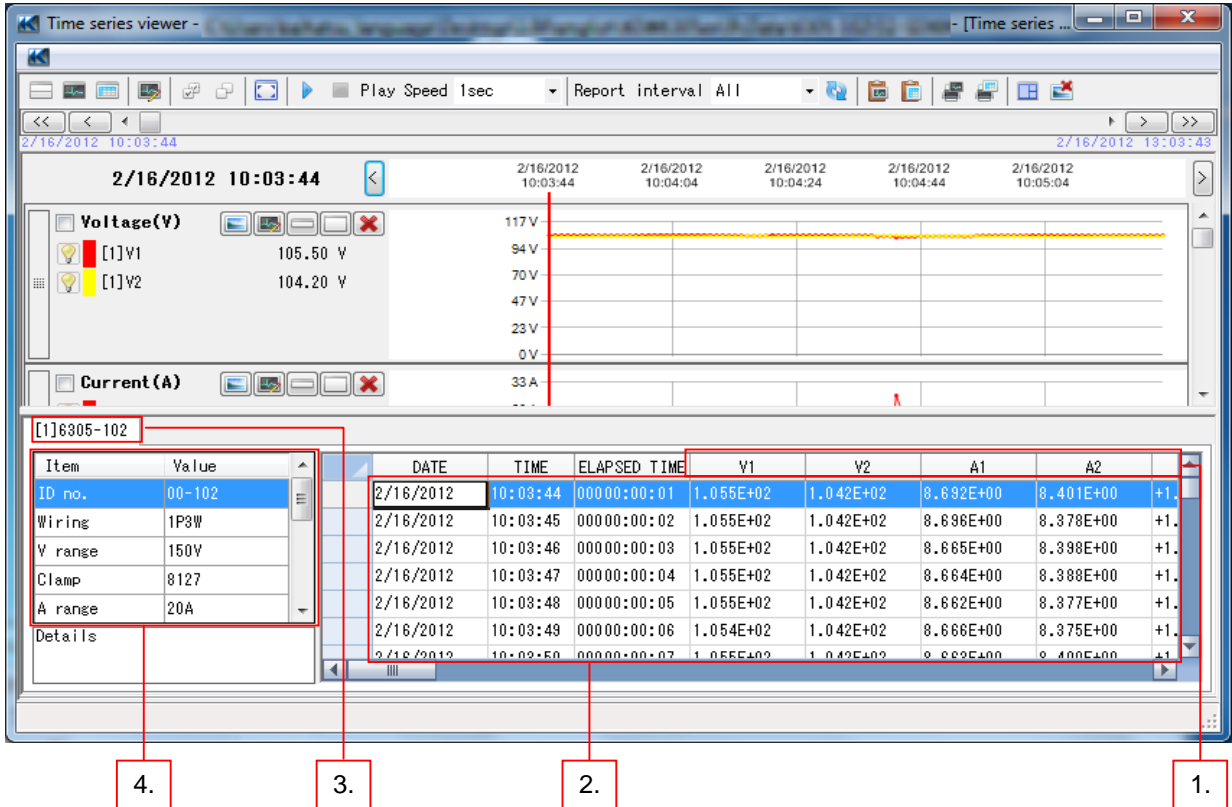
6. Items displayed at data analysis

6-1 Items displayed on graph



1. Date and time of the first analyzed data.
2. Date and time of the last analyzed data.
3. Date and time of the data pointed by the cursor.
4. Values contained in the data pointed by the cursor.

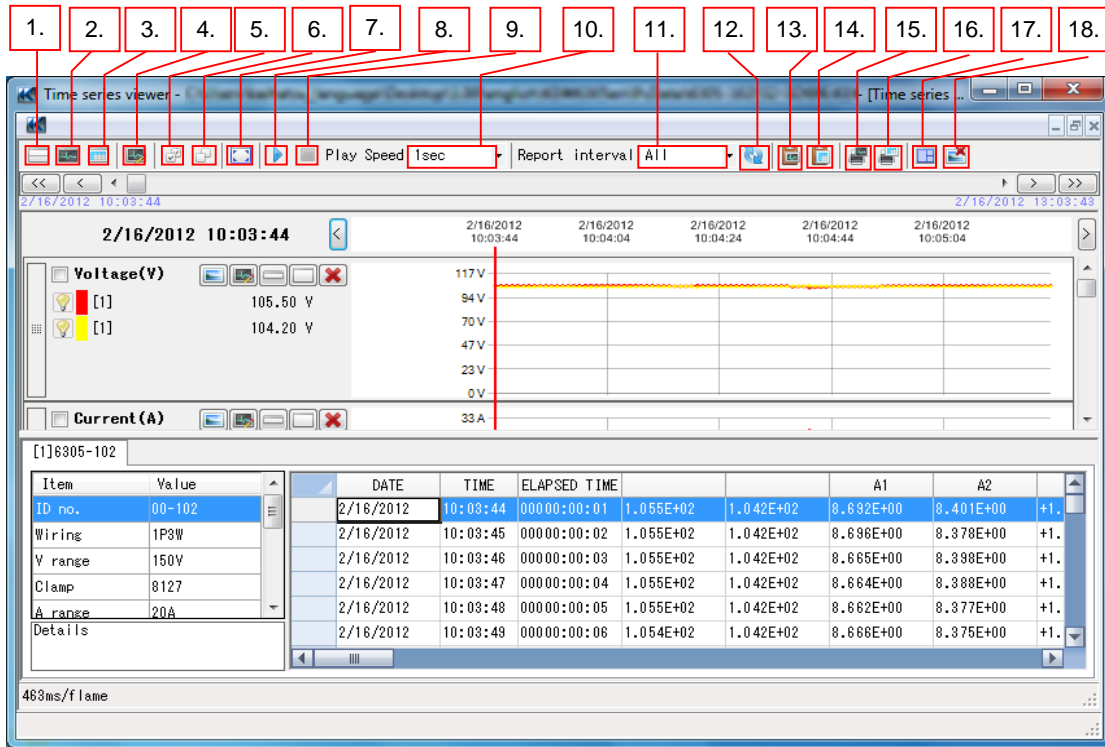
6-2 Items displayed on list



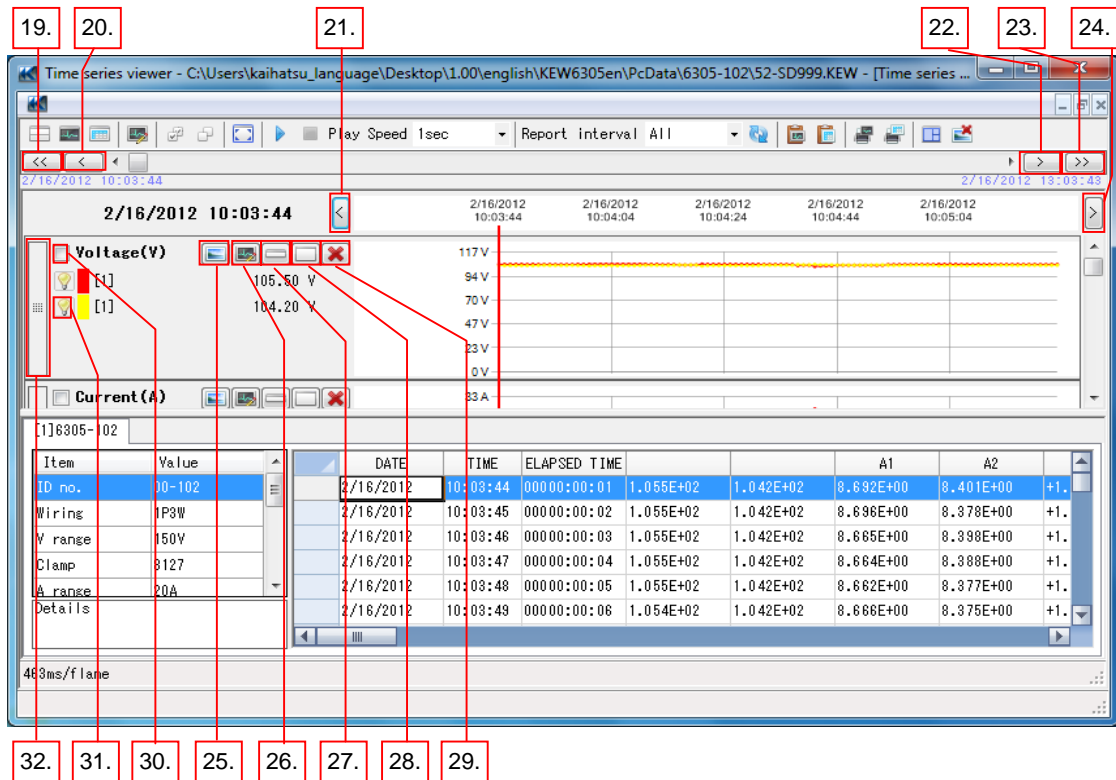
1. Parameters displayed on the graph.
2. Measured values currently displayed on the graph.
3. Serial no. of the analyzed data.
4. Measured conditions of analyzed data

7. Functions available at Data Analysis

Following functions are available at data analysis.



- | | |
|--------------------------------|---|
| 1. Display All | Display graph and list on the Time series window. |
| 2. Display graph only | Display graph only on the Time series window. |
| 3. Display list only | Display list only on the Time series window. |
| 4. Edit display | Show/ hide graph or graph parameters. |
| 5. Select All | Check all the check boxes. |
| 6. Deselect | Uncheck all the check boxes. |
| 7. Full-scale display | Display all data in one page. |
| 8. Start Auto play | Start auto-play. |
| 9. Stop Auto play | Stop auto-play. |
| 10. Play Speed | Change the play speed. |
| 11. Report Interval | Change the display interval. |
| 12. Change the Report interval | Reflect the changed Report interval. |
| 13. Copy Graph | Copy the whole graph. |
| 14. Copy List | Copy the selected part of the list. |
| 15. Print Graph | Print the currently displayed graph. |
| 16. Output Report/ list | Display the Report/list Output window. |
| 17. Arrange window | Optimize the size of graph and list to the Time series viewer window. |
| 18. Close Sub graph | Close the sub graph window. |

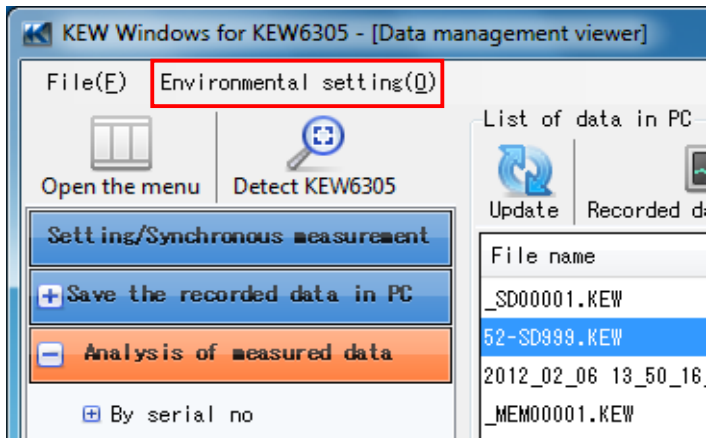


- | | |
|--------------------------------------|--|
| 19. Scroll back half a page | Scroll half a page to the left. |
| 20. Scroll back a quarter of page | Scroll a quarter of a page to the left. |
| 21. Cursor button | Move the cursor (red vertical line) to the left. |
| 22. Scroll forward a quarter of page | Scroll a quarter of a page to the right. |
| 23. Scroll forward half a page | Scroll half a page to the right. |
| 24. Cursor button | Move the cursor (red vertical line) to the right. |
| 25. Display Sub graph | Create another window and show the values of each graph parameter. |
| 26. Edit Graph | Show the editing window for the selected graph. |
| 27. Minimize | Minimize the selected graph. |
| 28. Maximize | Maximize the selected graph. |
| 29. Close | Close the selected graph. |
| 30. Check box | Settings of the checked boxes will be reflected on all graphs. |
| 31. Light bulb mark | Click to turn off the mark and hide a graph. |
| 32. Scroll bar | Scroll the graph display. |

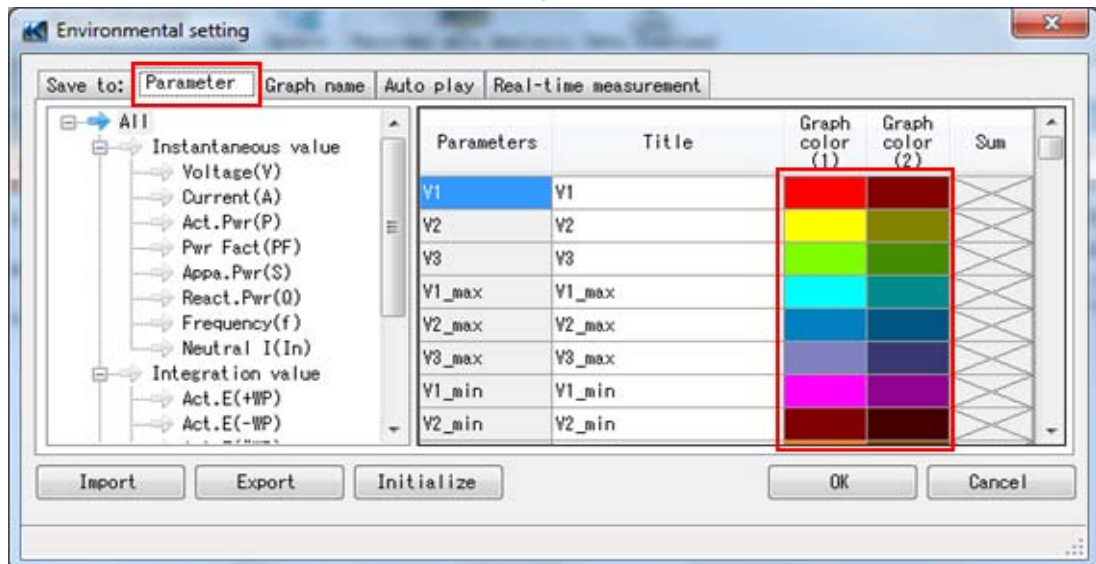
8. Graph display change

8-1 Graph color change

1. Click "Environmental setting" on the Data management viewer window.



2. Click the "Parameter" tab at Environmental setting window.
3. Double-click on the color you want to change.



4. Select any desirable color and click OK button.
5. Click "OK" and close the Environmental setting window. Display a graph from Data Analysis menu and confirm the changed colors are reflected on graph display.

8-2 Date interval change (Zoom-in)

1. Point the cursor on the date and time display on the graph.



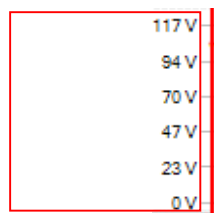
2. When the cursor changes, drag the cursor from the left to the right to expand the date interval.
Displayed intervals will vary depending on the selected area.

8-3 Date interval change (Zoom-out)

1. Point the cursor on the date and time display on the graph.
2. When the cursor changes, drag the cursor from the right to the left to narrow the date interval.
Displayed intervals will vary depending on the selected area.

8-4 Vertical ticks on graph (Zoom-in)

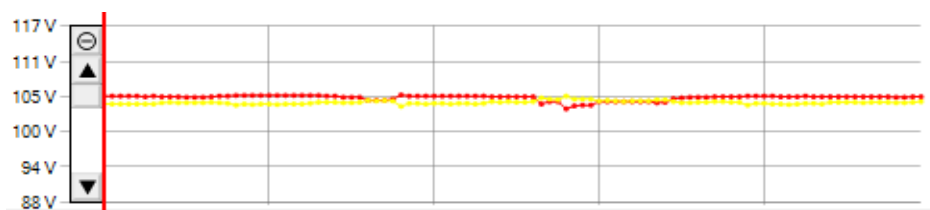
1. Point the cursor on the vertical axis of the graph indicating measured values.



2. When the cursor changes, drag the cursor and enlarge the target section.



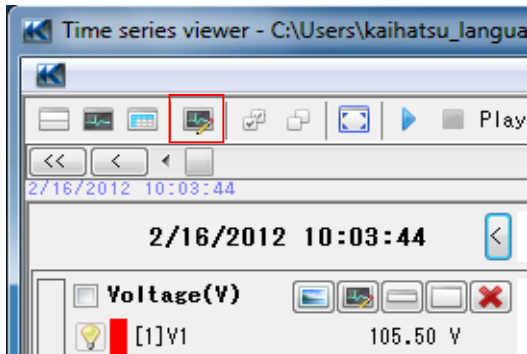
3. Dragged section is enlarged and displayed.



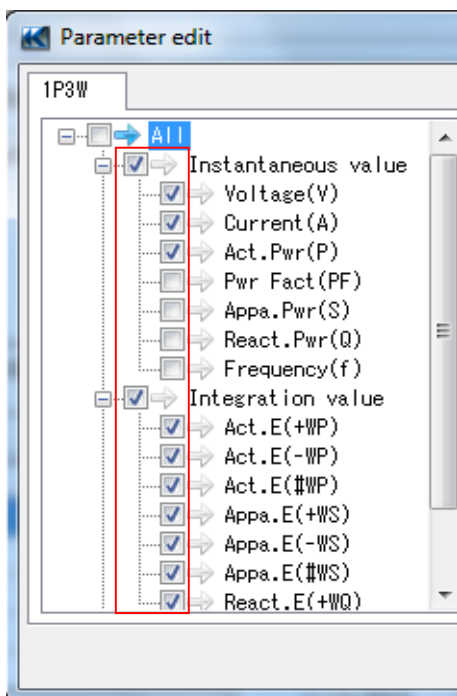
Enlarged ticks will be restored when clicking on "⊖" mark.

8-5 Display graph

1. Click "Edit graph display" button on Time series viewer window.



2. Check the boxes to display on graph.



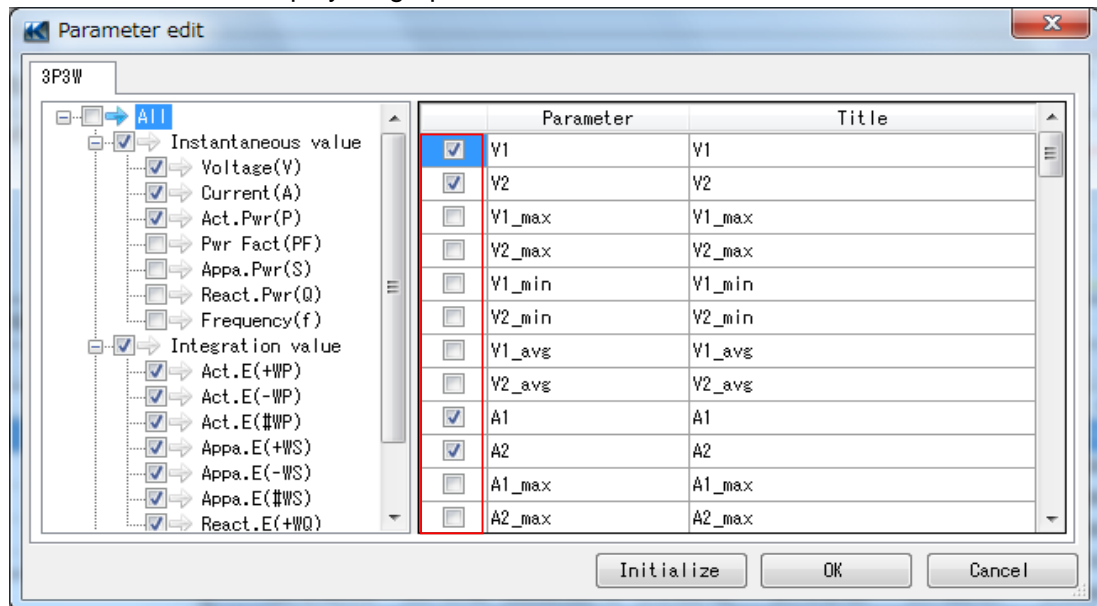
Click "OK" and close the Editing window.
Then the selected items will be displayed on graph.

8-6 Hide graph

1. Click "Edit graph display" button on Time series viewer window.
2. Uncheck the boxes to hide graphical display.
Click "OK" and close the Editing window.
Then graphs of unchecked items will not be displayed.

8-7 Display selected parameters on graph

1. Click "Edit graph display" button on Time series viewer window.
2. Check the boxes to display on graph.



Click "OK" and close the Editing window.
Then graph of the checked parameters will be displayed.

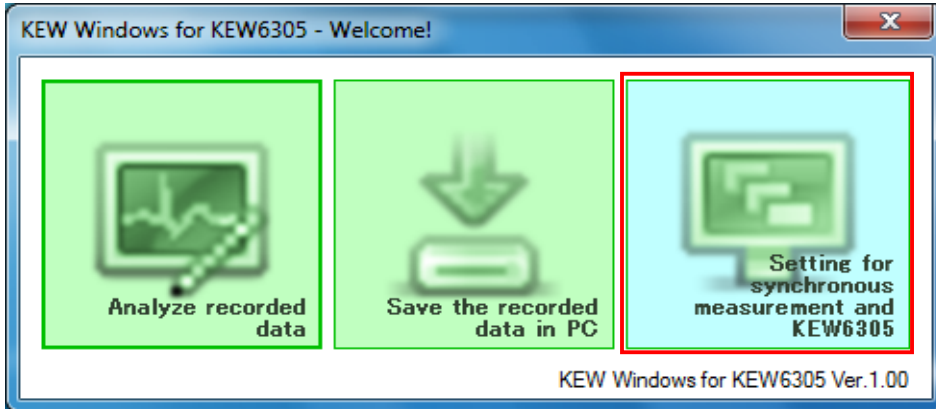
8-8 Hide selected parameters on graph

1. Click "Edit display" button on Time series viewer window.
2. Uncheck the boxes to hide graphical display.
Click "OK" and close the Editing window.
Then graphs of unchecked parameters will not be displayed.

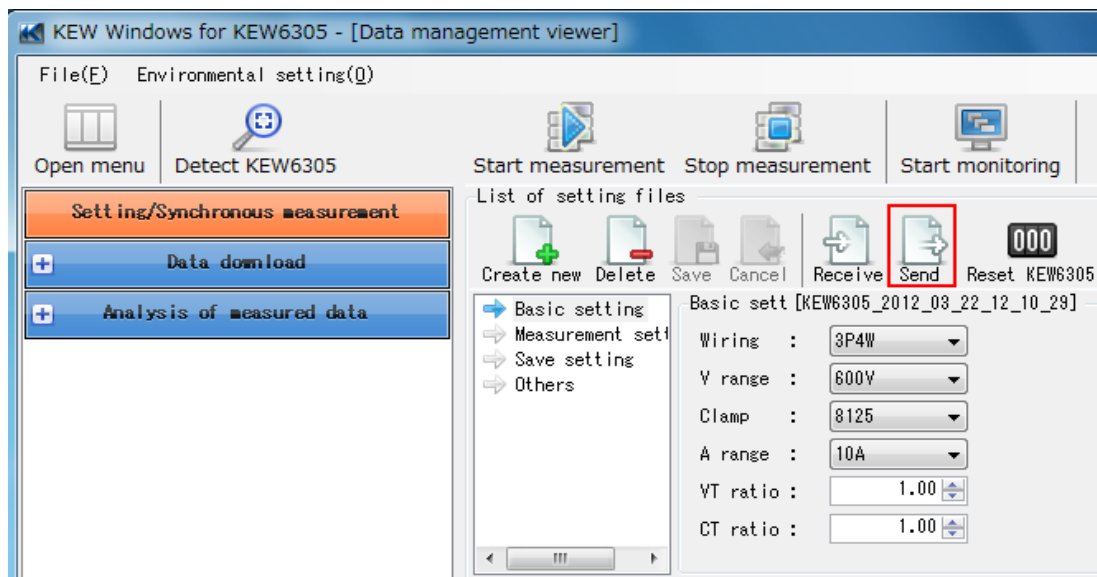
9. Instrument setting

9-1 Instrument setting

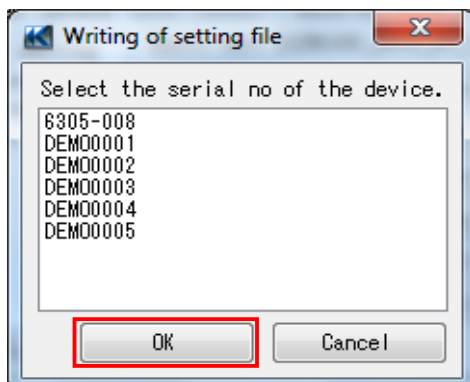
1. Select "Setting for synchronous measurement and KEW6305" on the Menu window. Menu window will appear when starting the application or click "Open menu" on Data management viewer.



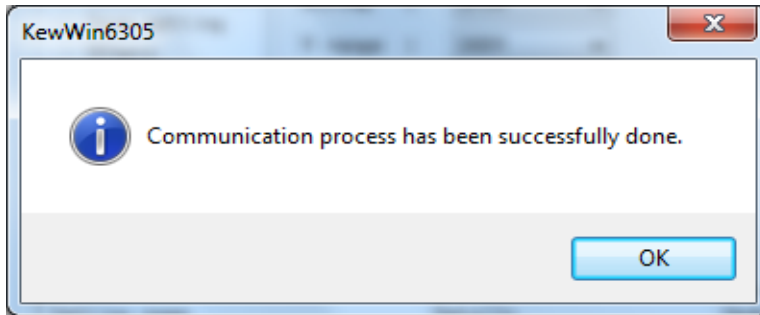
2. Select setting files to be sent to KEW6305 instrument. If such a file is not available, create necessary setting files in advance. File sending procedures are described at clause 6-3.
3. Click "Send".



4. When Confirmation window appears, select the serial no. of KEW6305 to which you want to send the selected Setting files and click "OK".

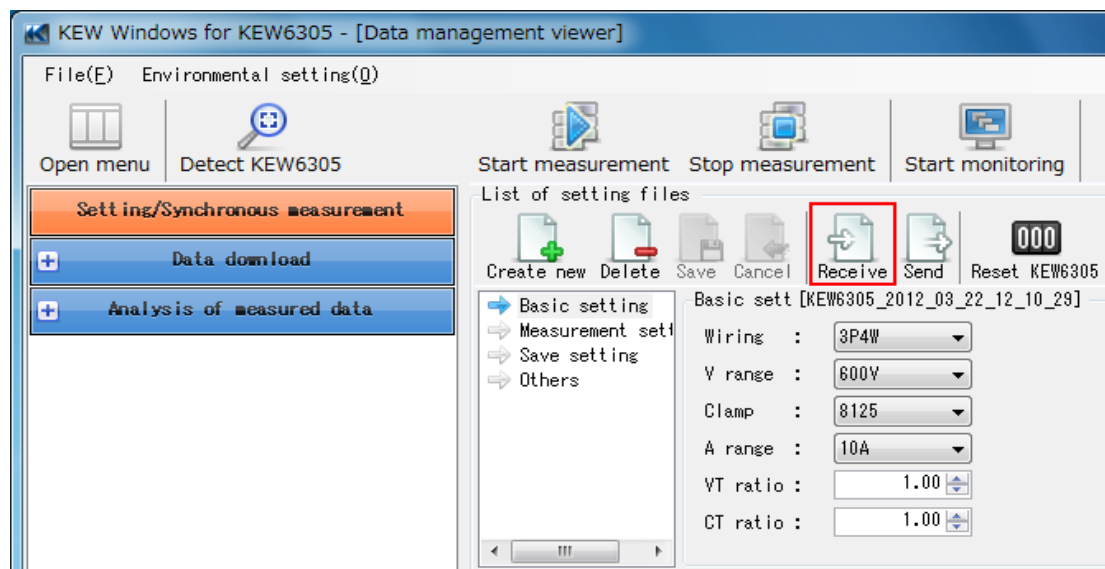


- Files have been successfully sent when the following message appears.
Click "OK" and close the message.

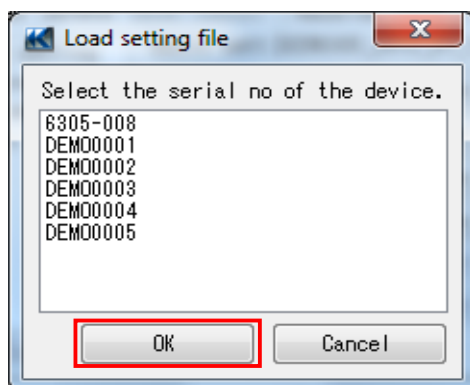


9-2 Save KEW6305 settings

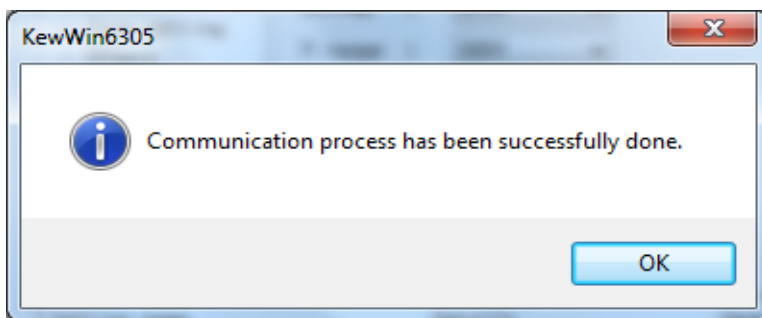
- Select "Setting for synchronous measurement and KEW6305" on the Menu window.
Menu window will appear when starting the application or click "Open menu"
on Data management viewer.
- Click "Receive".



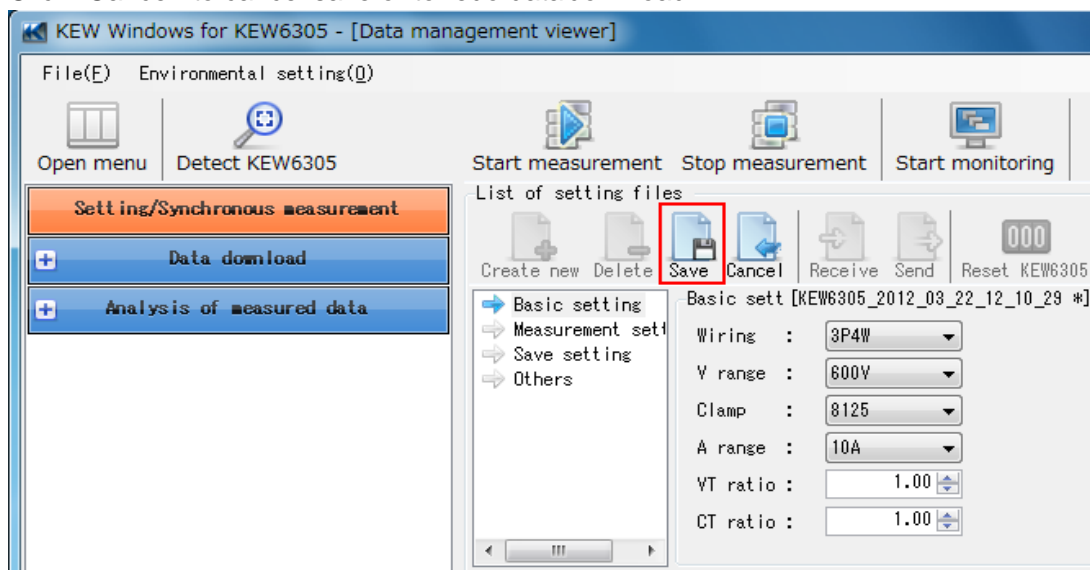
- Select the serial no. of the device to download its settings to PC.



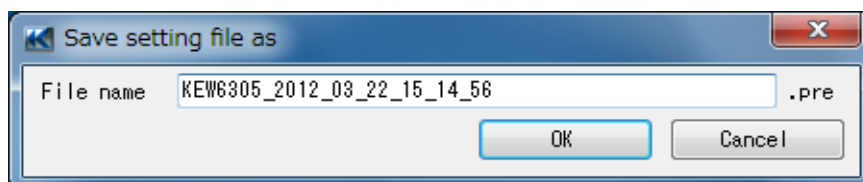
- Files have been successfully downloaded when following message appears.
Click "OK" and close the message.



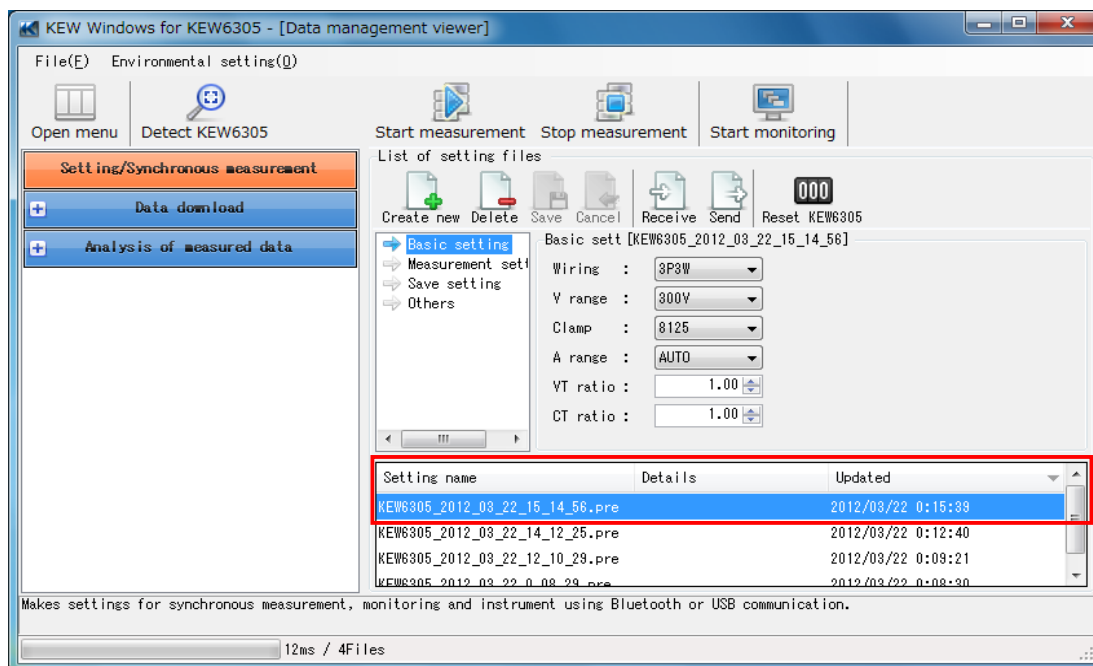
- Click "Save".
Click "Cancel" to cancel save or to redo data download.



- Enter a name for the file and click "OK".

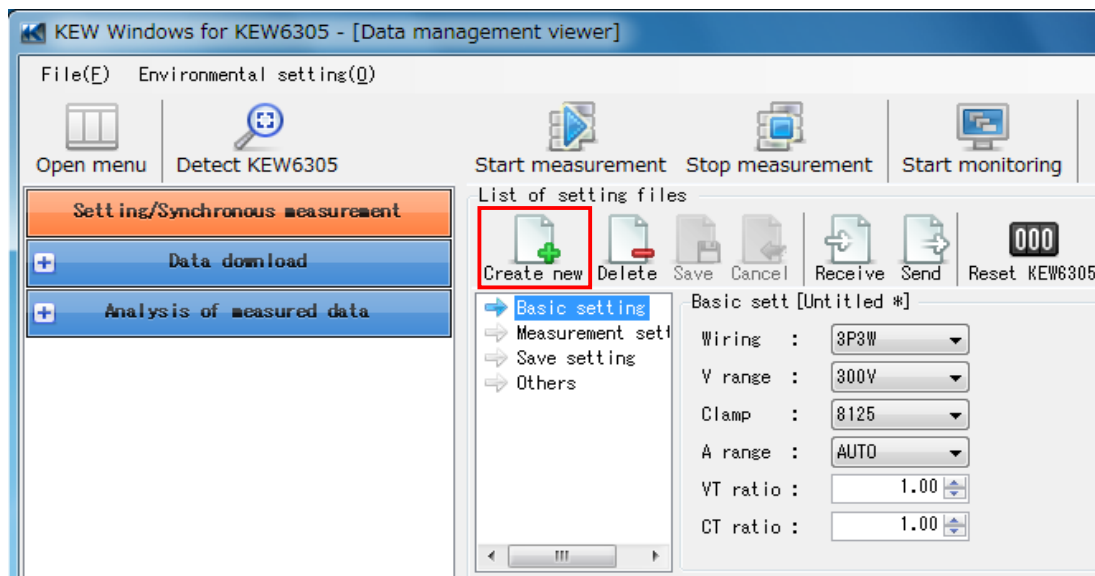


The file will be saved and displayed at the bottom of the window.
 Details of setting contained in the file can be checked by clicking Basic setting,
 Measurement setting, Save setting and others displayed at the middle of the window.

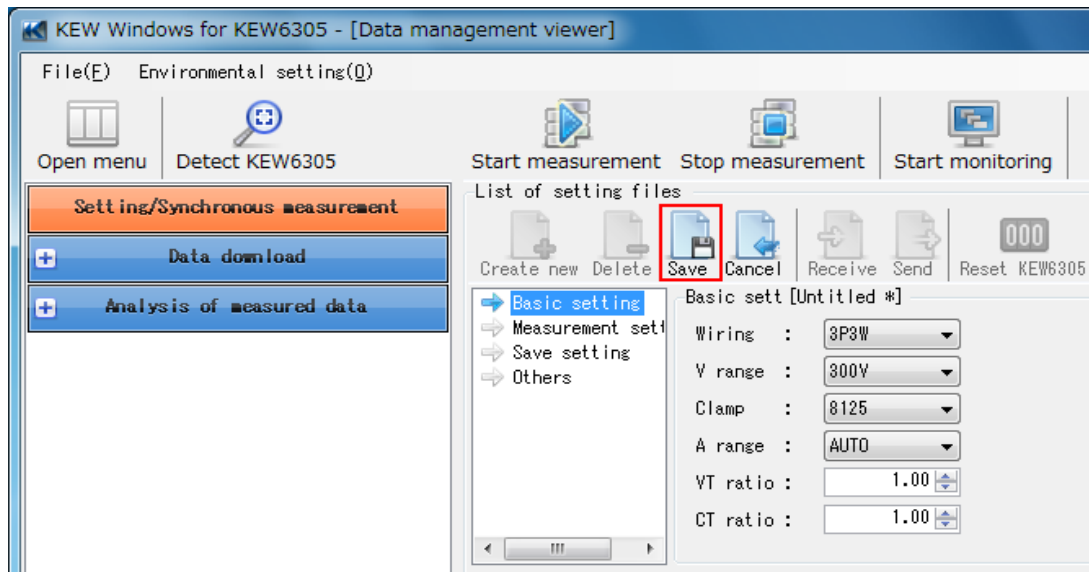


9-3 Create setting file

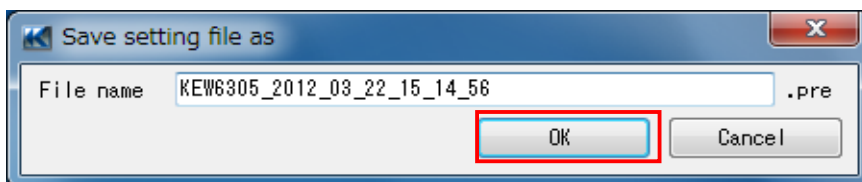
1. Click "Create new".



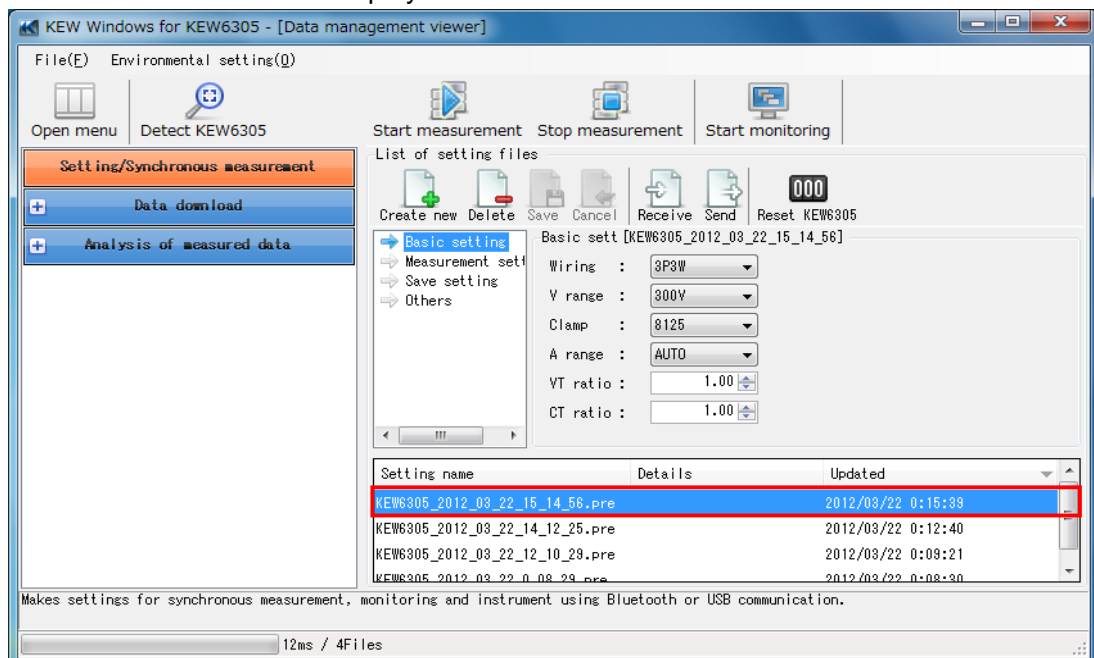
2. Make each setting as needed.
3. Click "Save" when necessary changes are done.



4. Enter a name for the file and click "OK".

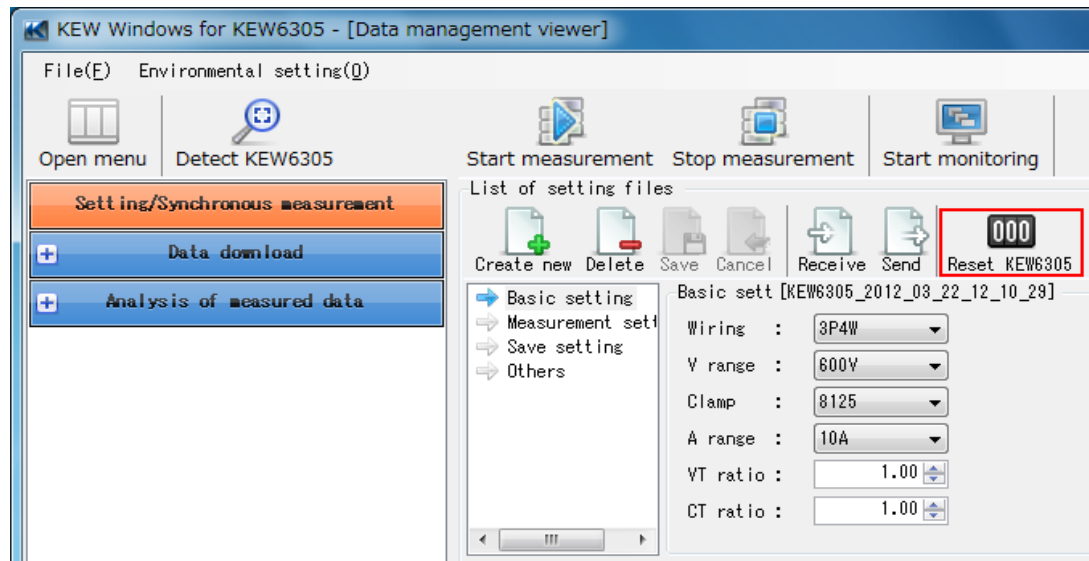


The file will be saved and displayed at the bottom of the window.

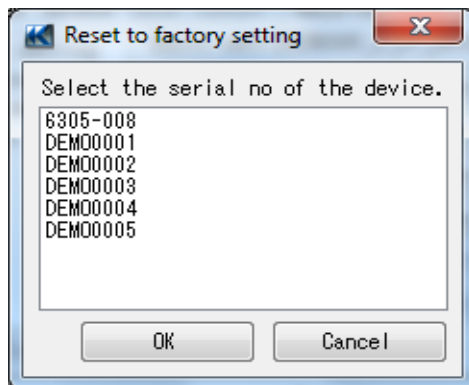


9-4 Reset KEW6305

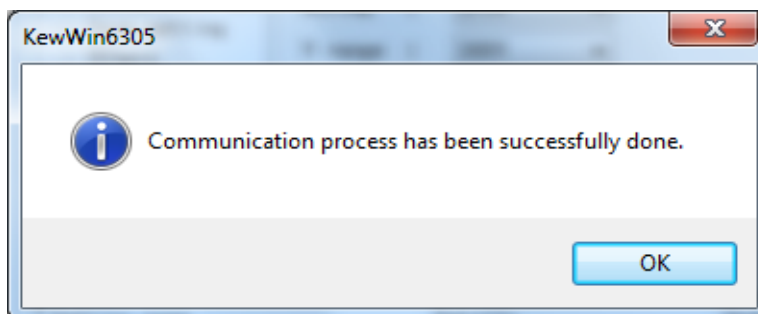
1. Click "Reset KEW6305".



2. Select the serial no. of KEW6305 to be reset.

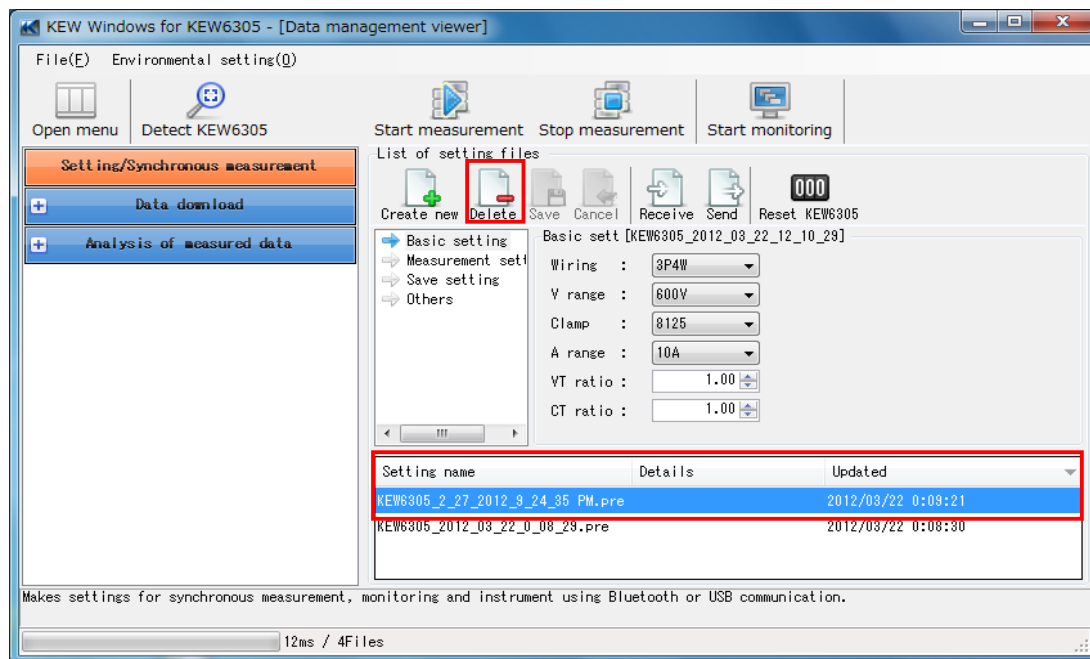


3. Settings of the selected KEW6305 have been reset.
Click "OK" and close the message.

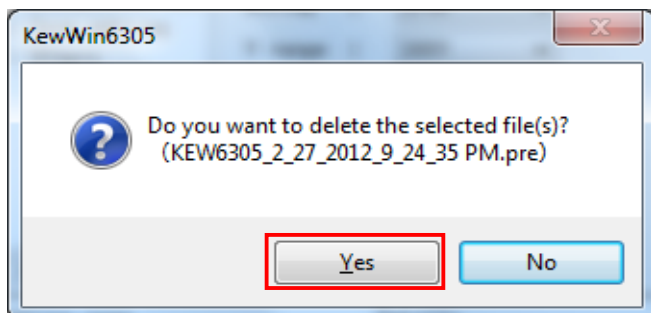


9-5 Delete setting file

1. Select files to be deleted.
2. Click "Delete".

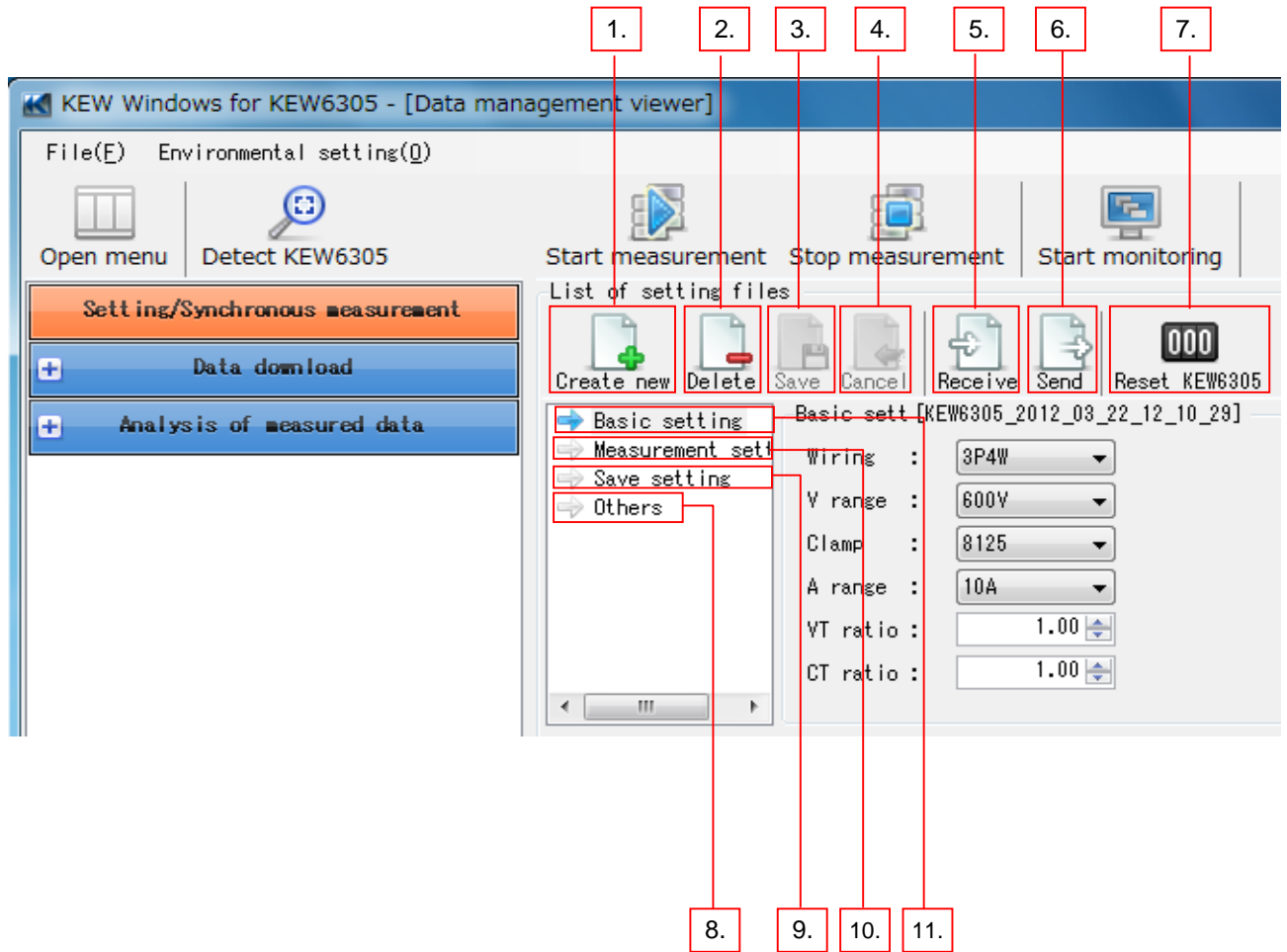


3. Click "Yes (Y)" when a confirmation message appears.



The file will be removed from the list displayed at the bottom of the window.

10. Functions for instrument setting

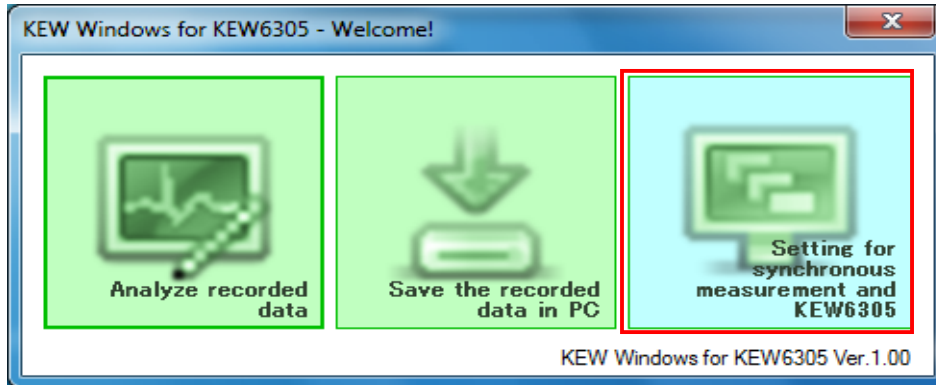


- | | |
|------------------------|---|
| 1. Create new | Create a new setting file. |
| 2. Delete | Delete a setting file. |
| 3. Cancel | Cancel the editing. |
| 4. Save | Save setting in a file. |
| 5. Receive | Download settings from KEW6305. |
| 6. Send | Send settings from PC to KEW6305. |
| 7. Reset KEW6305 | Initialize the settings of KEW6305. |
| 8. Basic setting | Make settings for wiring system, voltage/ current range, clamp sensor and VT/CT ratio. |
| 9. Measurement setting | Make settings for demand measurement cycle, demand warning cycle, recording interval, target demand and target demand unit. |
| 10. Save setting | Specify method of saving and start/stop date and time. |
| 11. Others | Make settings for help, buzzer and ID number. |

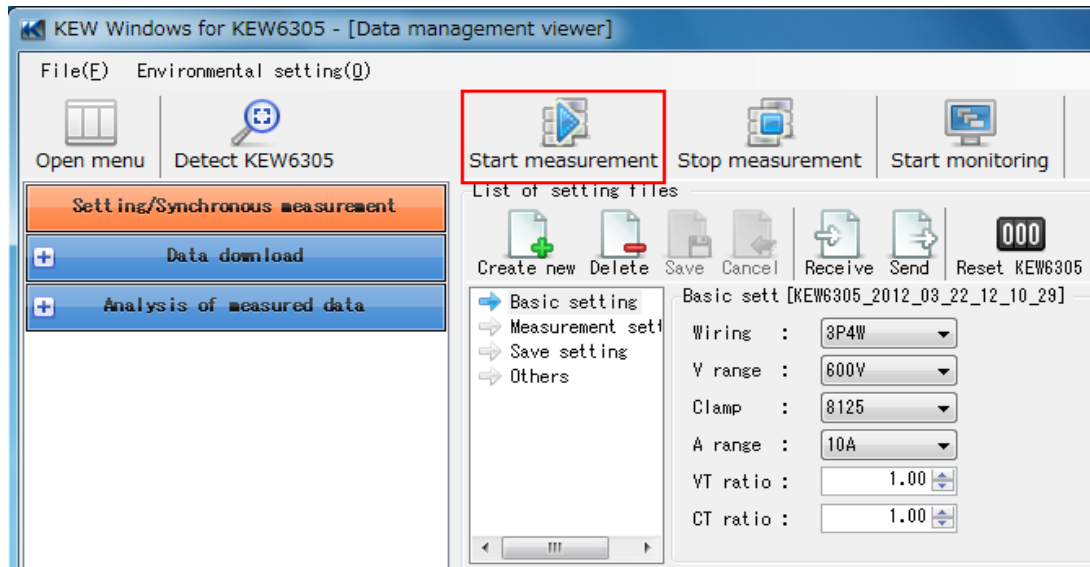
11. Synchronous measurement

11-1 Start synchronous measurement

1. Select "Setting for synchronous measurement and KEW6305" on the Menu window. Menu window will appear when starting the application or click "Open menu" on Data management viewer.

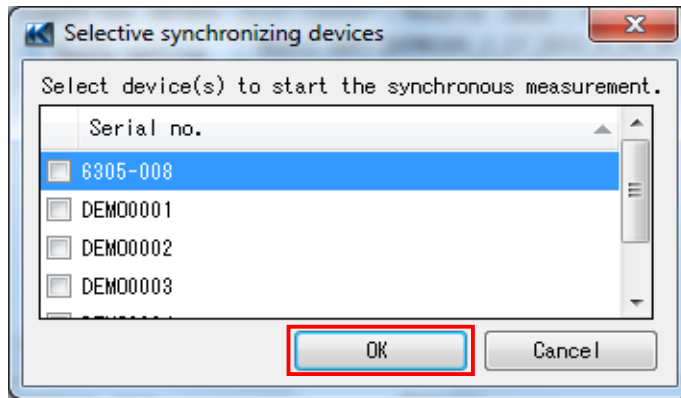


2. Click "Start measurement".



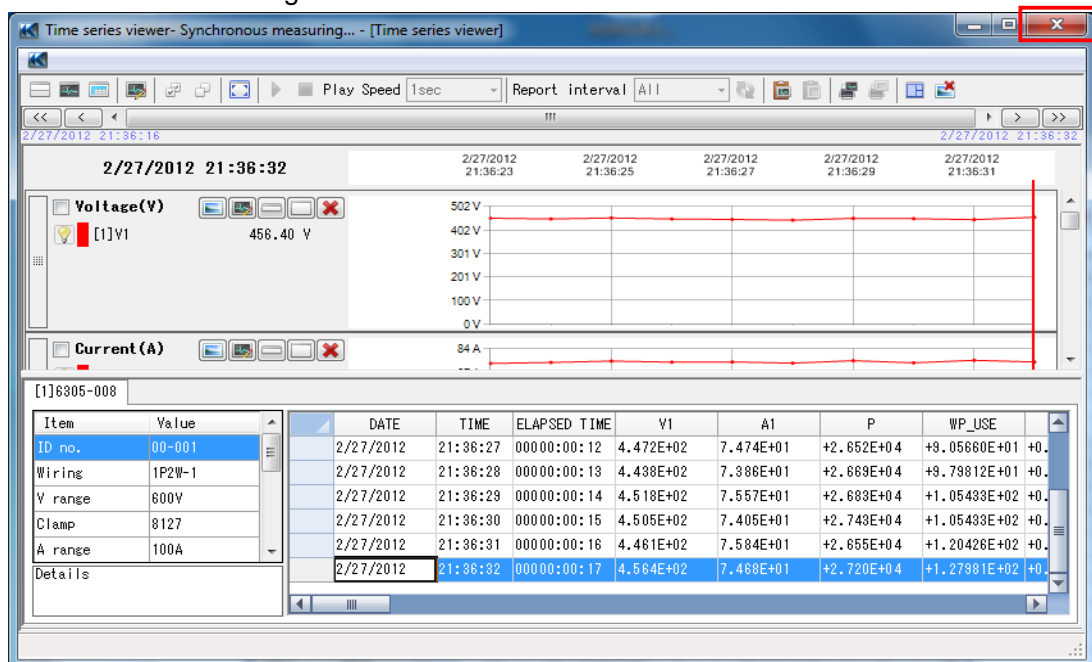
3. Check the boxes and select the serial no. of devices to be synchronized. When performing a synchronous measurement with two units of KEW6305, two boxes should be checked. Then click "OK".

4. The selected devices start a synchronous measurement.

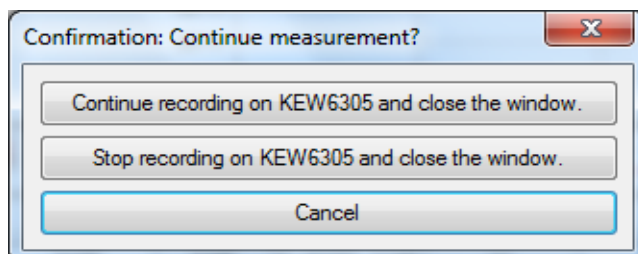


11-2 Stop synchronous measurement

1. Click "x" mark at the right corner of the Time series viewer window.



2. Select "Continue recording on KEW6305 and close the window" to quit this application while KEW6305 continues recording data, and "Stop recording on KEW6305 and close the window" to stop recording and measurement on this application and on KEW6305.



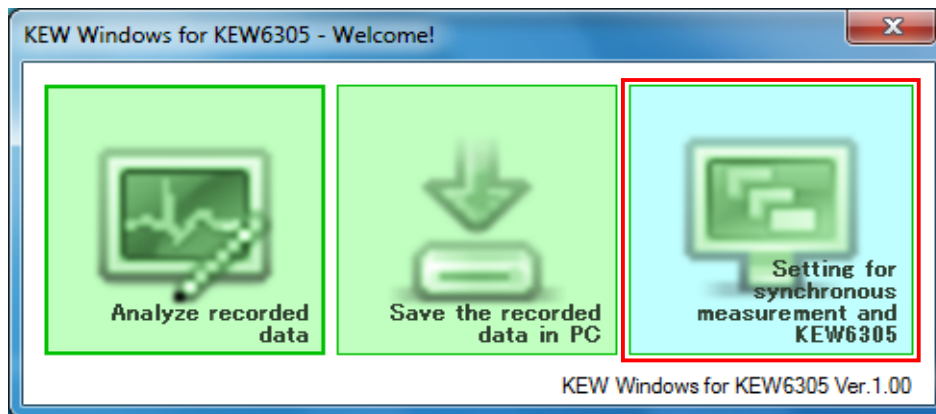
Time series window disappears automatically when a synchronous measurement via application ends.

12. Monitoring

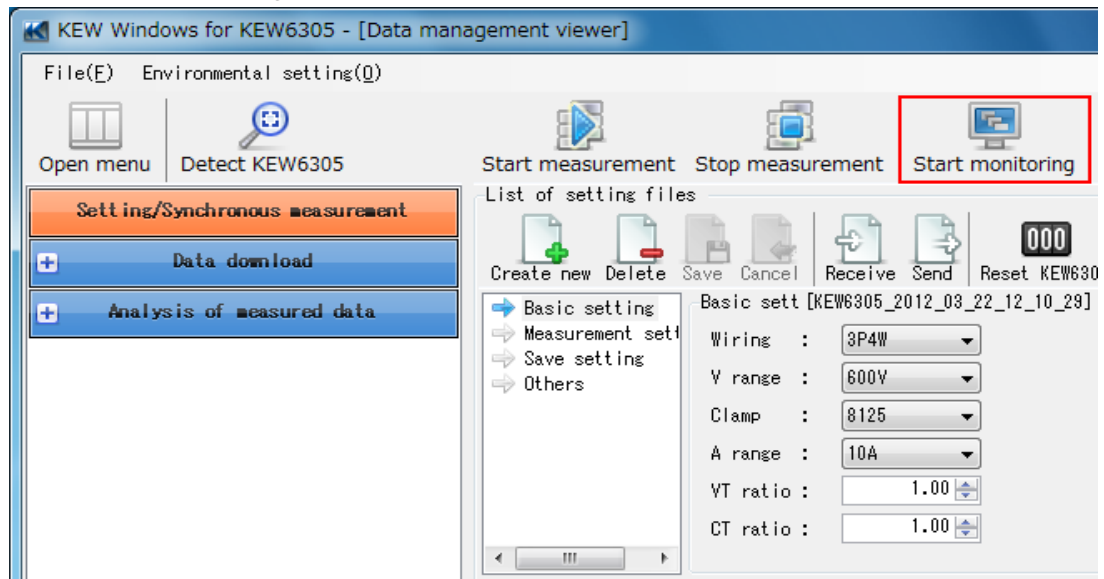
Ensure that KEW6305 is ready for recording before using the Monitoring function. There are 2 methods to get KEW6305 ready for recording: 1) start synchronous measurement and then select "Continue recording on KEW6305 and close the window." on the confirmation screen, or 2) hold down START/STOP Key on KEW6305 for 1 sec or longer. For further details, please read the instruction manual for KEW6305.

12-1 Start monitoring

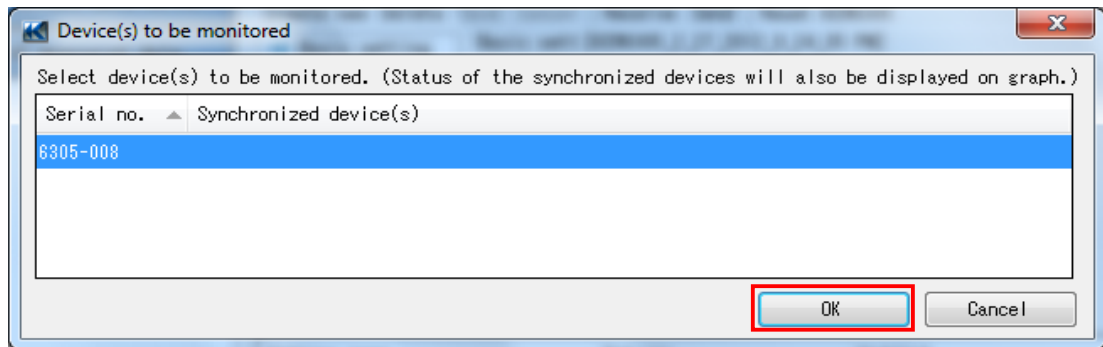
1. Select "Setting for synchronous measurement and KEW6305" on the Menu window. Menu window will appear when starting the application or click "Open menu" on Data management viewer.



2. Click "Start monitoring".



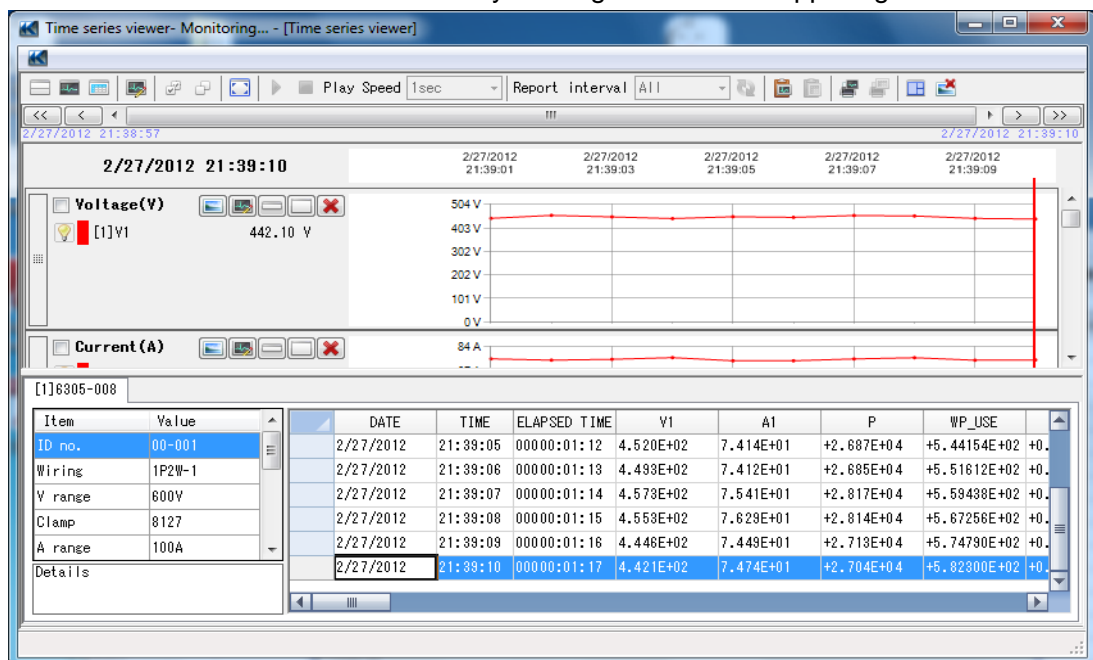
- Click on the serial no. displayed on the Device(s) to be monitored window.



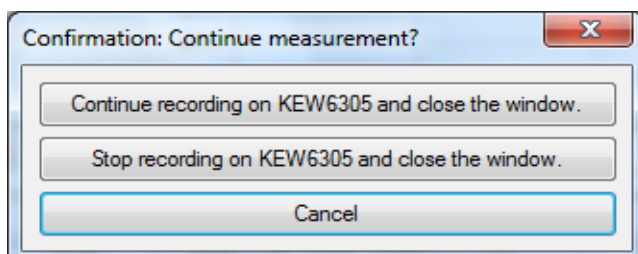
Monitoring of the selected device(s) will initiate.

12-2 Stop monitoring

- Close the Time series viewer window by clicking the "x" in the upper right corner.



- Select "Continue recording on KEW6305 and close the window" to stop monitoring, and "Stop recording on KEW6305 and close the window" to stop monitoring and recording on KEW6305.

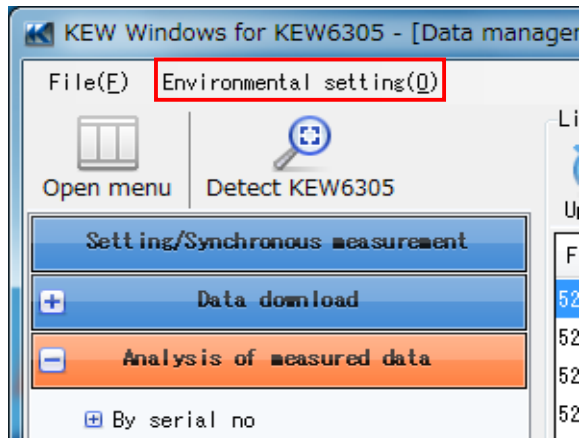


Time series window disappears automatically when a monitoring ends.

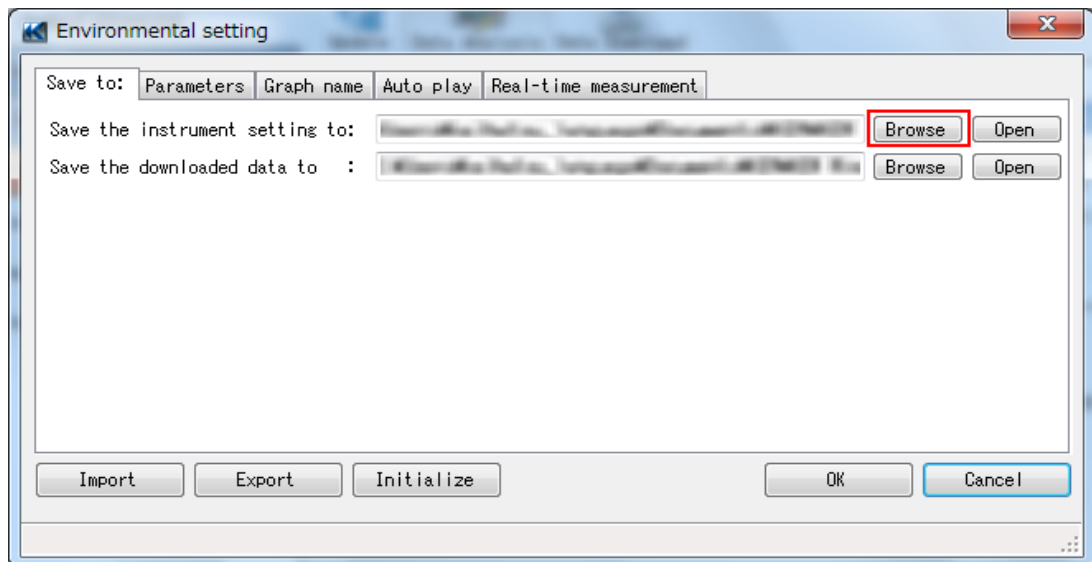
13. Environmental setting

13-1 Change folder for saving instrument settings

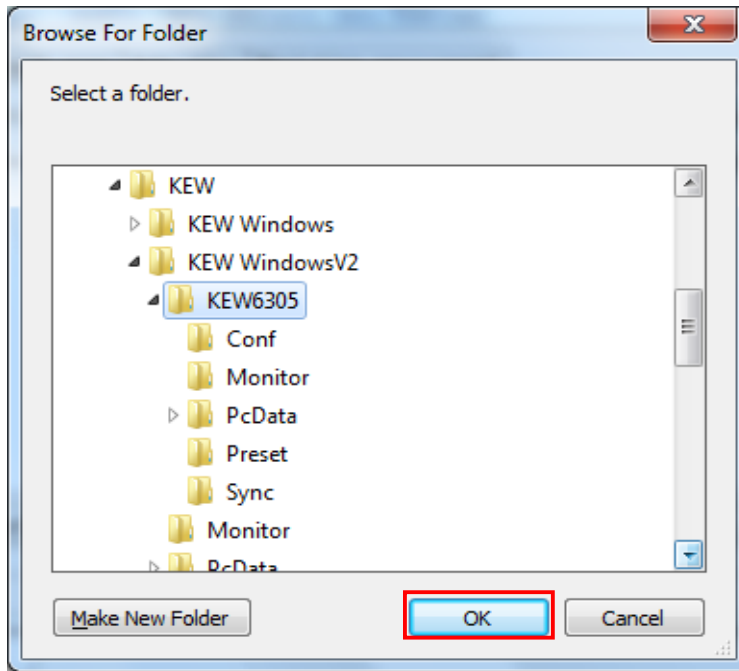
1. Click "Environmental setting" on the Data management viewer.



2. Click "Browse".



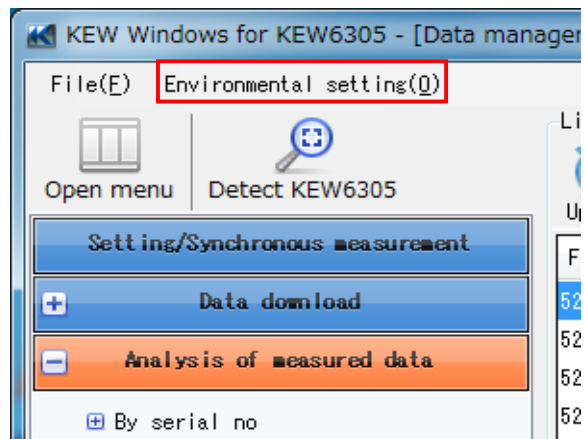
3. Select a folder and click "OK".



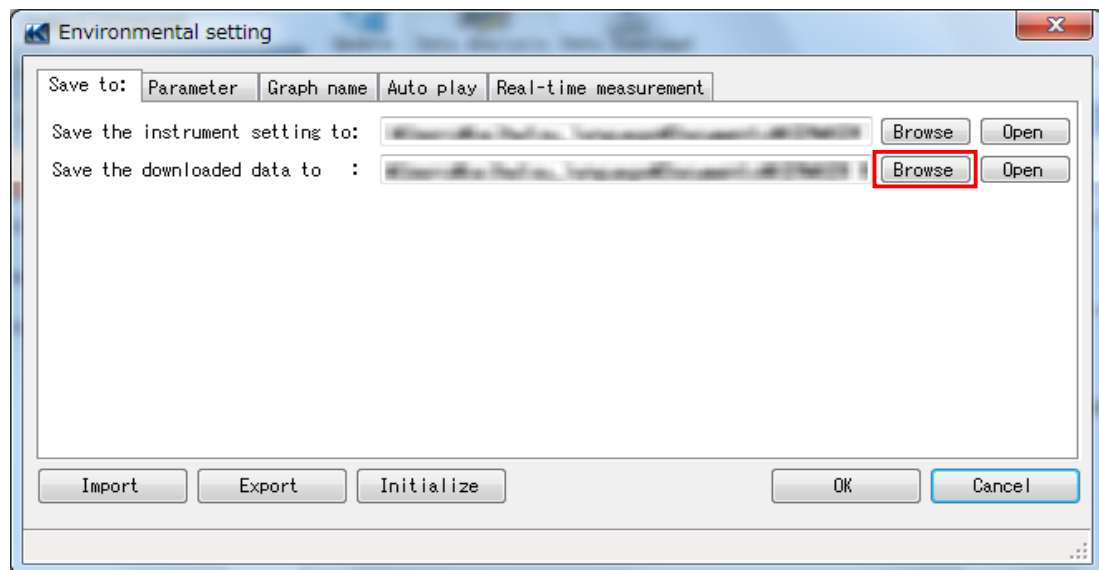
Click "OK" on Environmental setting window and complete the folder change.

13-2 Change folder for saving the downloaded data

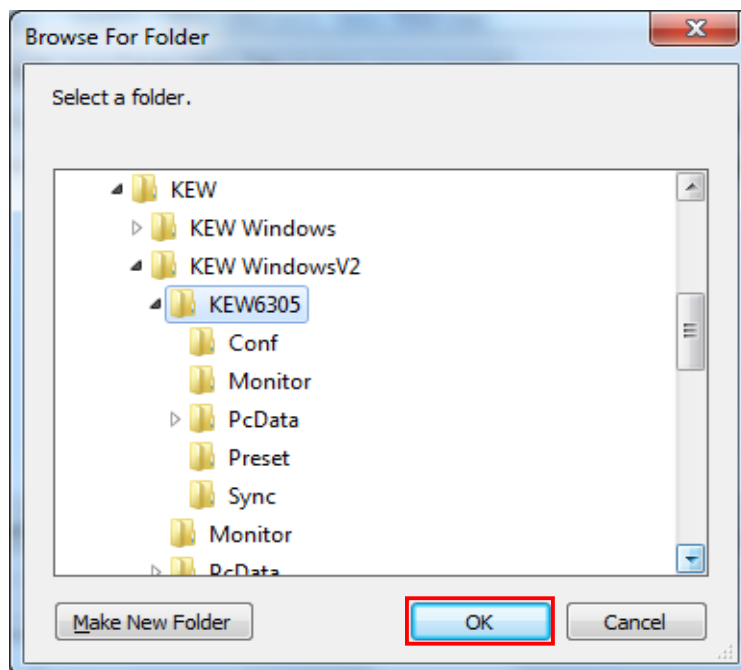
1. Click "Environmental setting" on the Data management viewer.



2. Click "Browse".



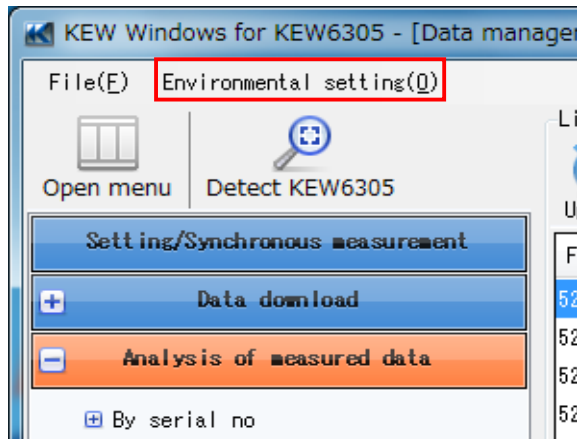
3. Select a folder and click "OK".



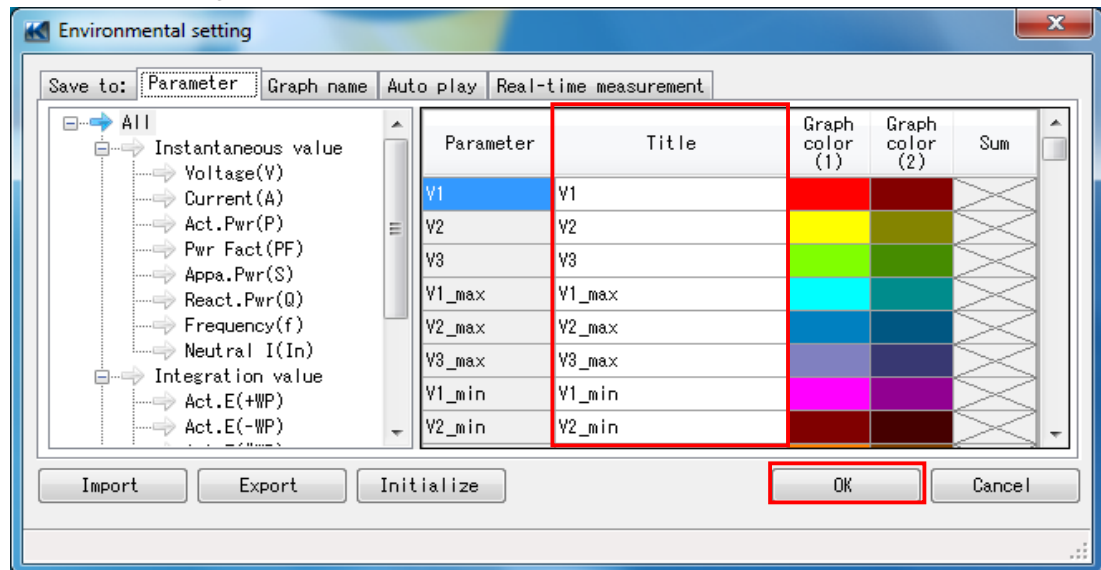
Click "OK" on Environmental setting window and complete the folder change.

13-3 Change title of parameter to be displayed

1. Click "Environmental setting" on the Data management viewer.



2. Click the Parameter tab.
3. Select and change the titles.



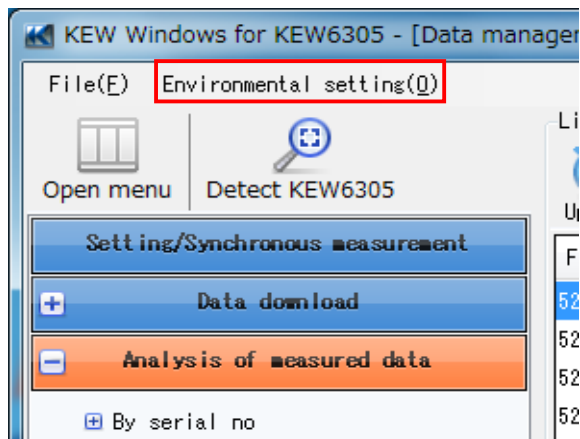
Click "OK" and complete the change.

Changes made during data analysis will not be immediately reflected on graph display.

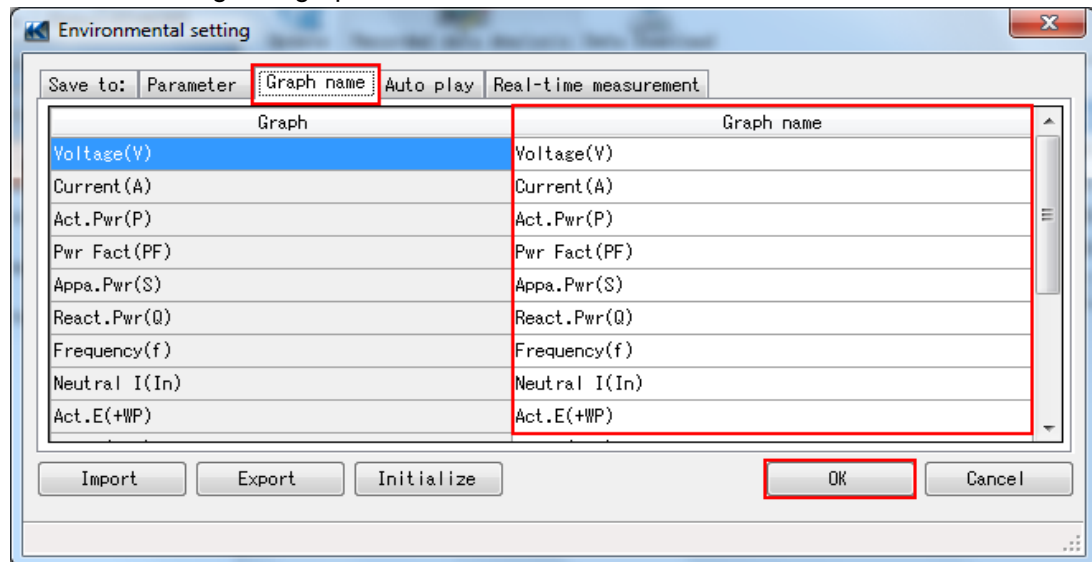
To reflect the changes on graph display,
close the currently opened graph once and open it again.

13-4 Change graph name

1. Click "Environmental setting" on the Data management viewer.



2. Click the Graph name tab.
3. Select and change the graph names.



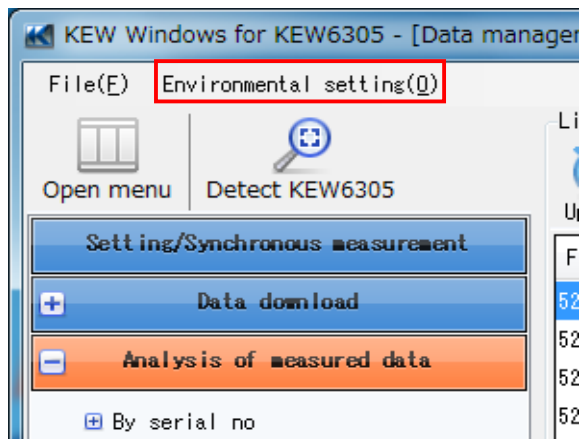
Click "OK" and complete the change.

Changes made during data analysis will not be immediately reflected on graph display.

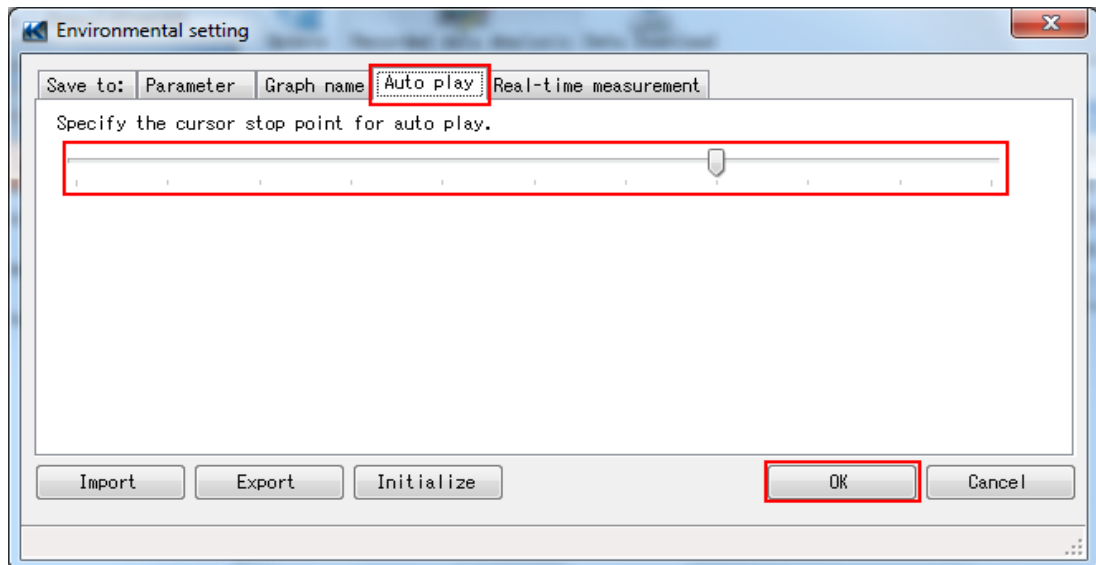
To reflect the changes on graph display,
close the currently opened graph once and open it again.

13-5 Change Cursor stop position at auto-play

1. Click "Environmental setting" on the Data management viewer.



2. Click the Auto play tab.
3. Put the cursor where you want to stop the auto-play.



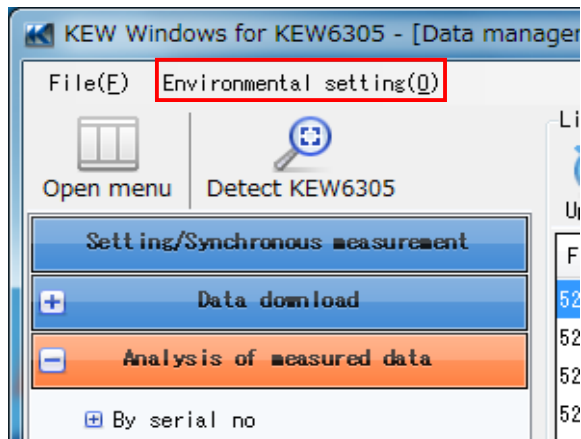
Click "OK" and complete the change.

Changes made during data analysis will not be immediately reflected on graph display.

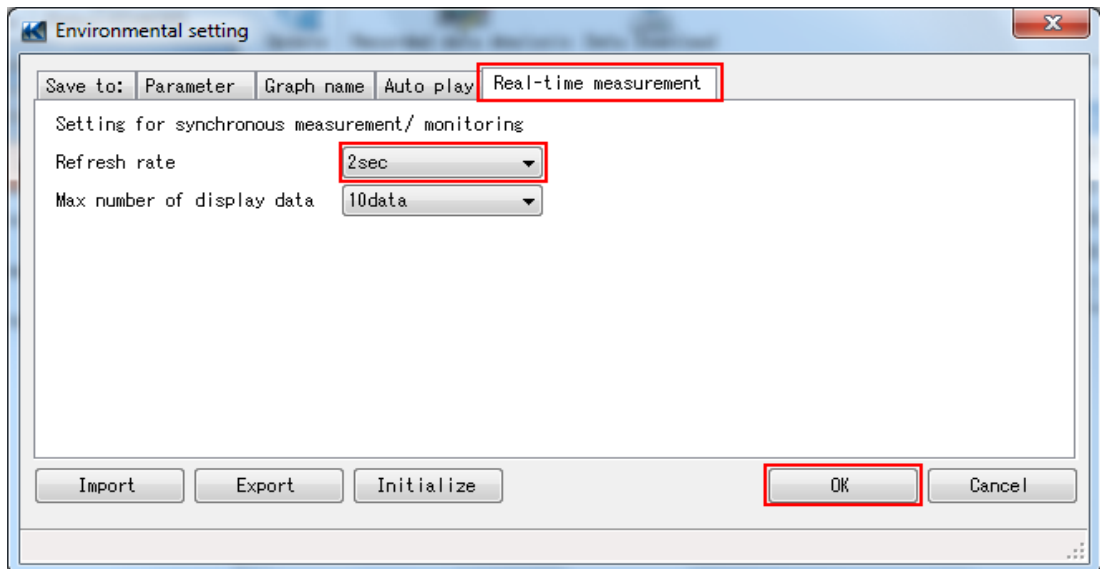
To reflect the changes on graph display,
close the currently opened graph once and open it again.

13-6 Change refresh rate for synchronous and monitoring measurements

1. Click "Environmental setting" on the Data management viewer.



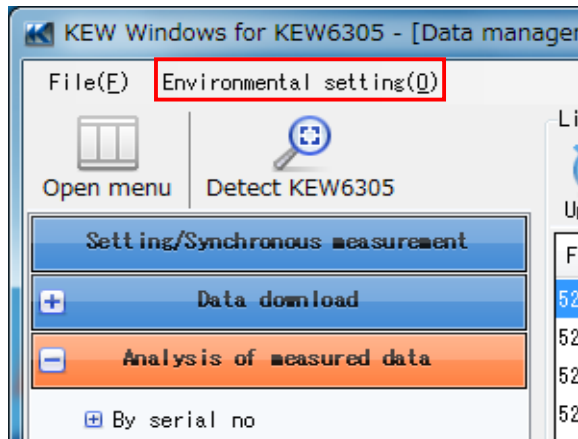
2. Click the Real-time measurement tab.
3. Select a desirable Refresh rate.



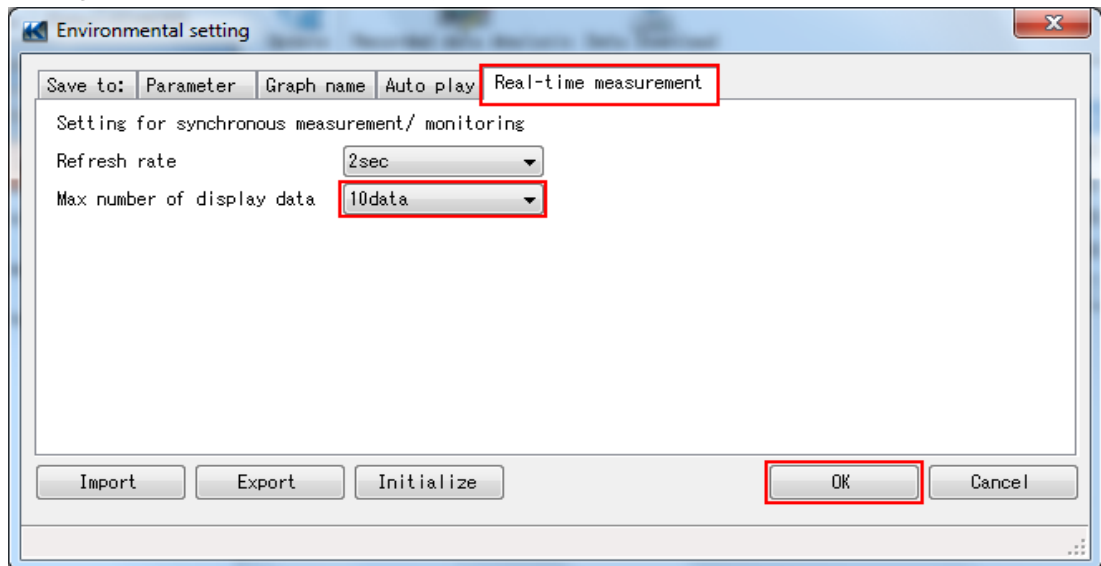
Click "OK" and complete the change.

13-7 Change number of displayed data during synchronous and monitoring measurements

1. Click "Environmental setting" on the Data management viewer.



2. Click the Real-time measurement tab.
3. Change the max number of display data.

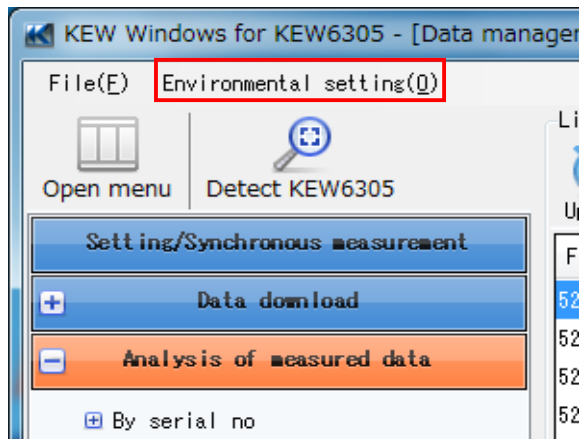


Click "OK" and complete the change.

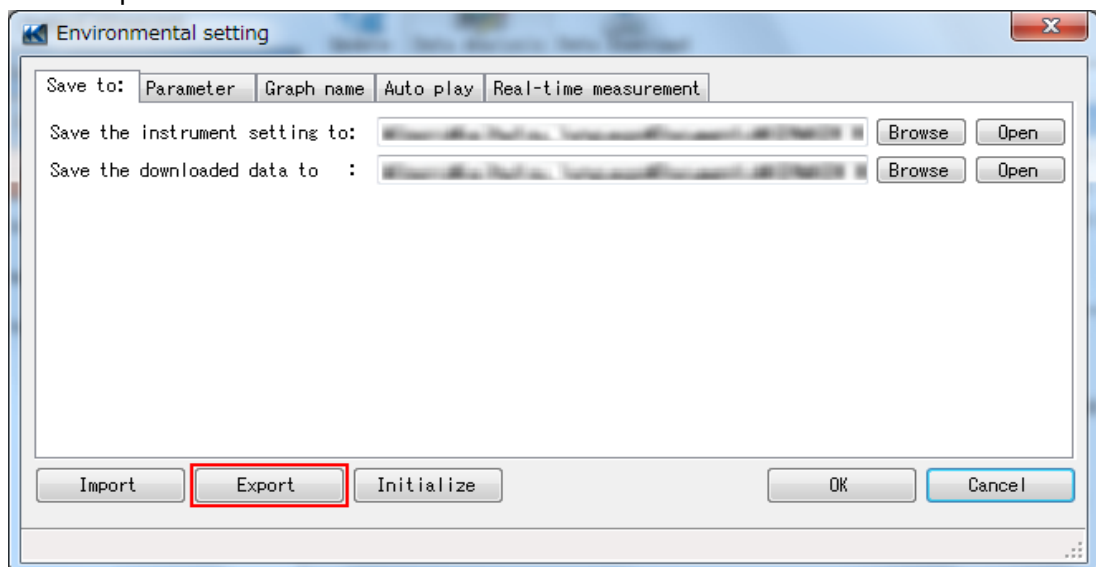
Changes made during data analysis will not be immediately reflected on graph display.

13-8 Save the environmental settings

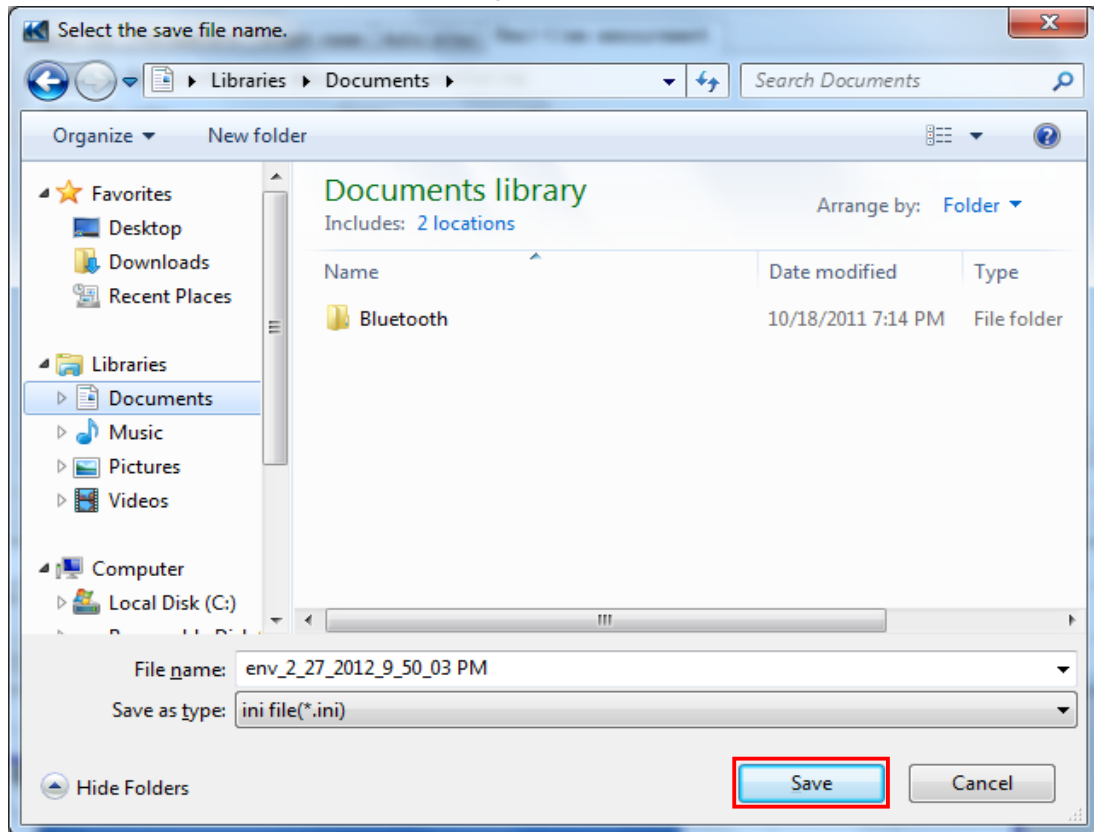
1. Click "Environmental setting" on the Data management viewer.



2. Click "Export".



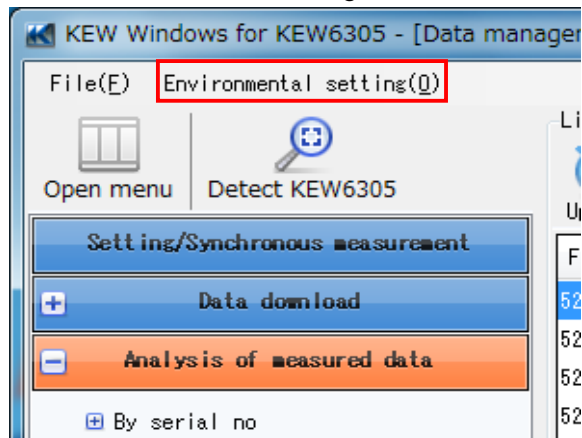
3. Specify a destination to save the settings and click "Save".



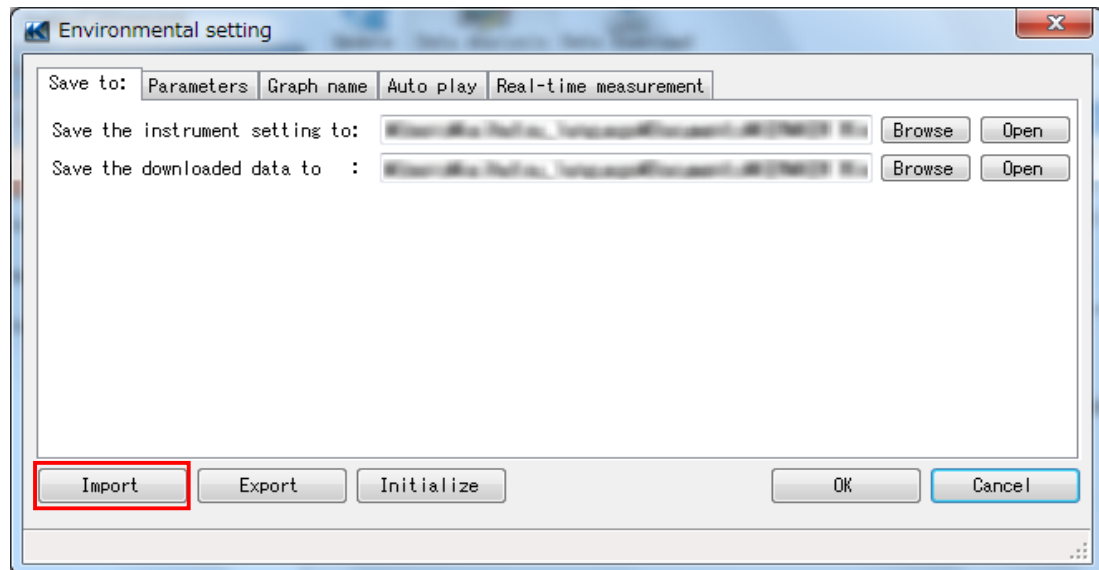
The setting file has been saved.

13-9 Load the environmental settings

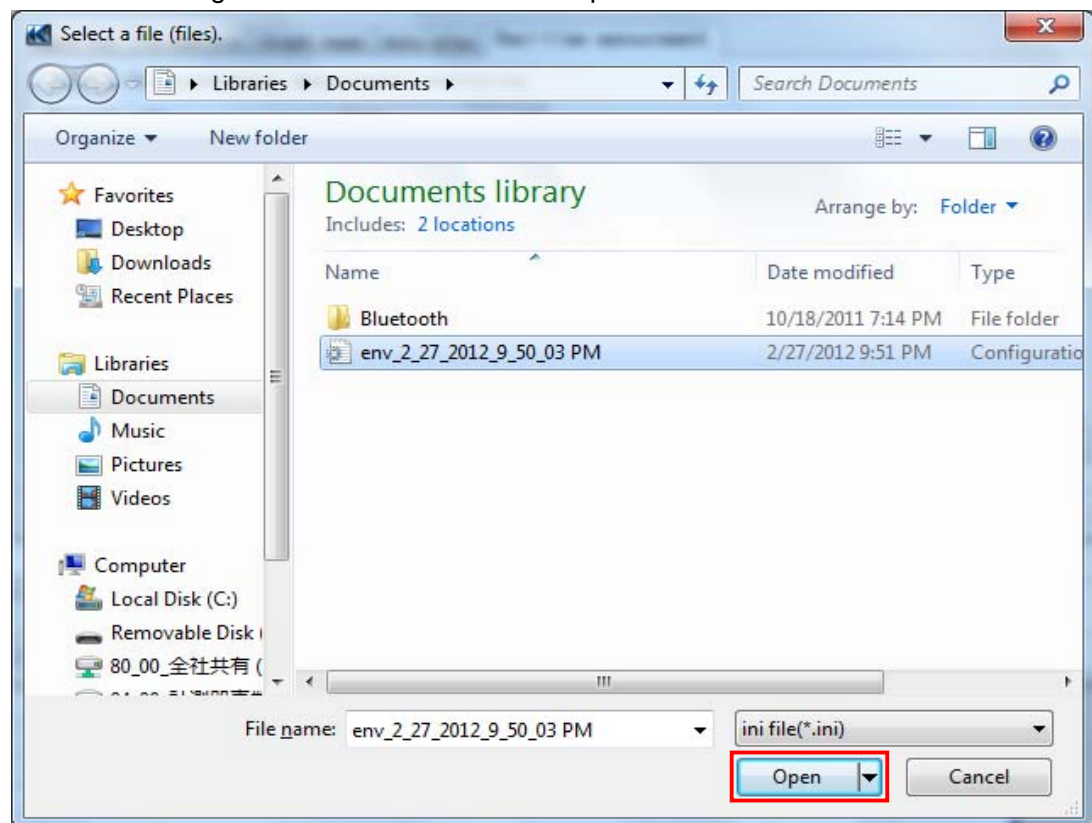
1. Click "Environmental setting" on the Data management viewer.



2. Click "Import".



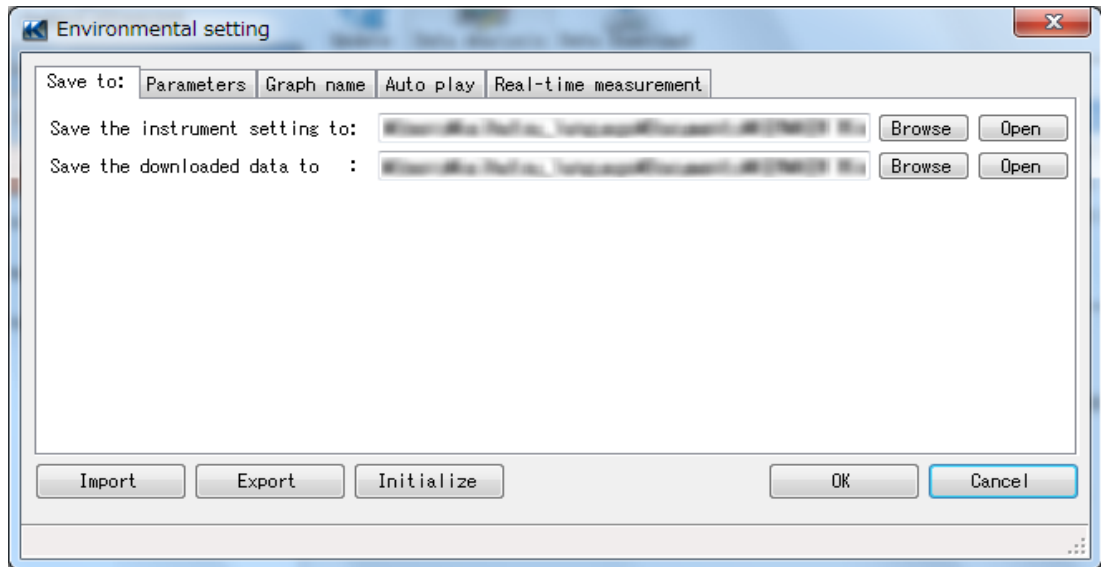
3. Select the setting file to be loaded and click "Open".



The setting file has been loaded.

14. Details of environmental setting items

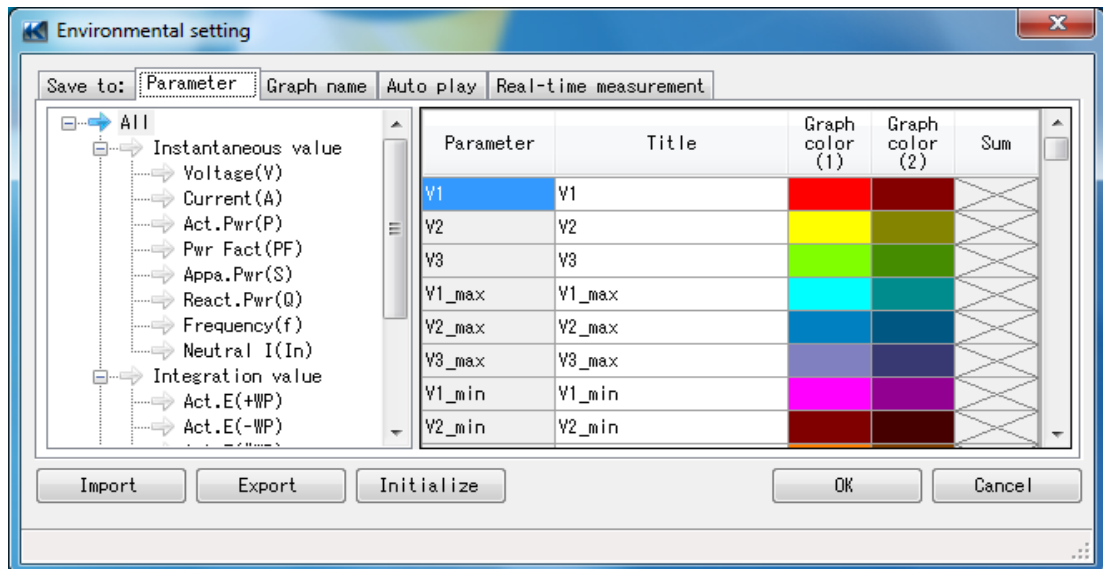
14-1 Save to: Tab



Save the instrument setting to: Instrument setting file is saved in this directory.

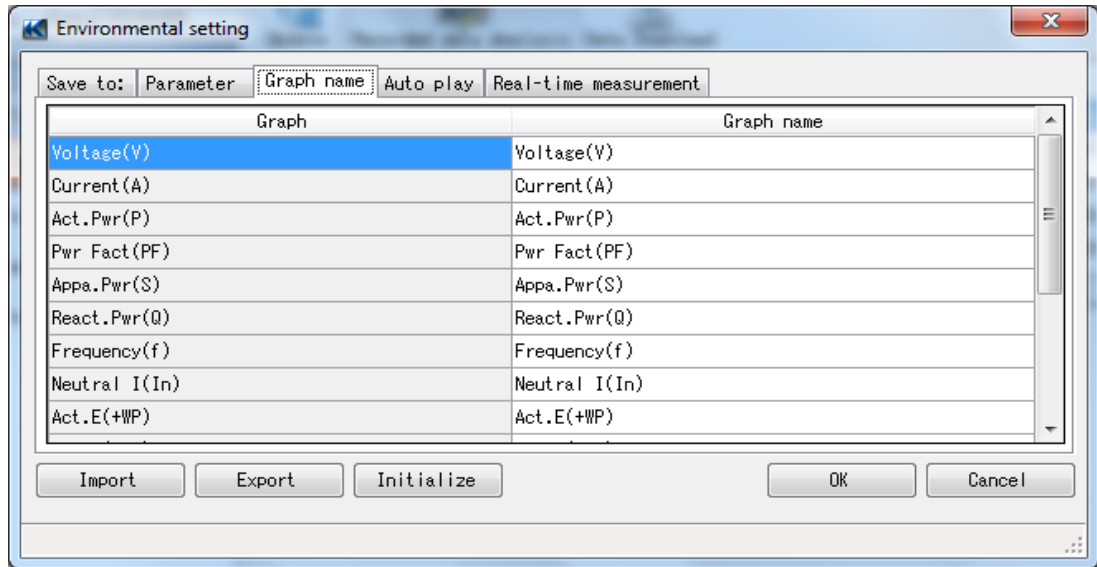
Save the downloaded data to: Downloaded file is saved in this directory.

14-2 Parameter Tab



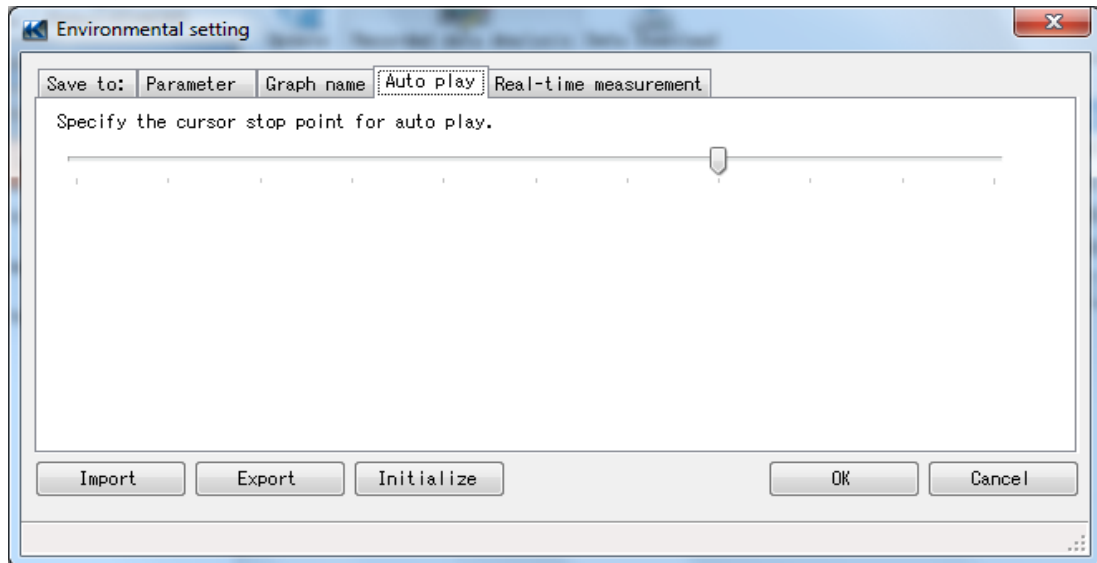
- Tree view
Graph names are listed in tree view and parameters to be displayed on each graph are listed in the table on the right.
- Title
Titles listed in this row are displayed on graph.
- Graph color (1)
Colors listed in this row are used on graph.
- Graph color (2)
Colors listed in this row are used on graph.
(when two units of KEW6305 are used)
- Sum
Values listed in this row are displayed on graph as sums of two units of KEW6305.

14-3 Graph name Tab



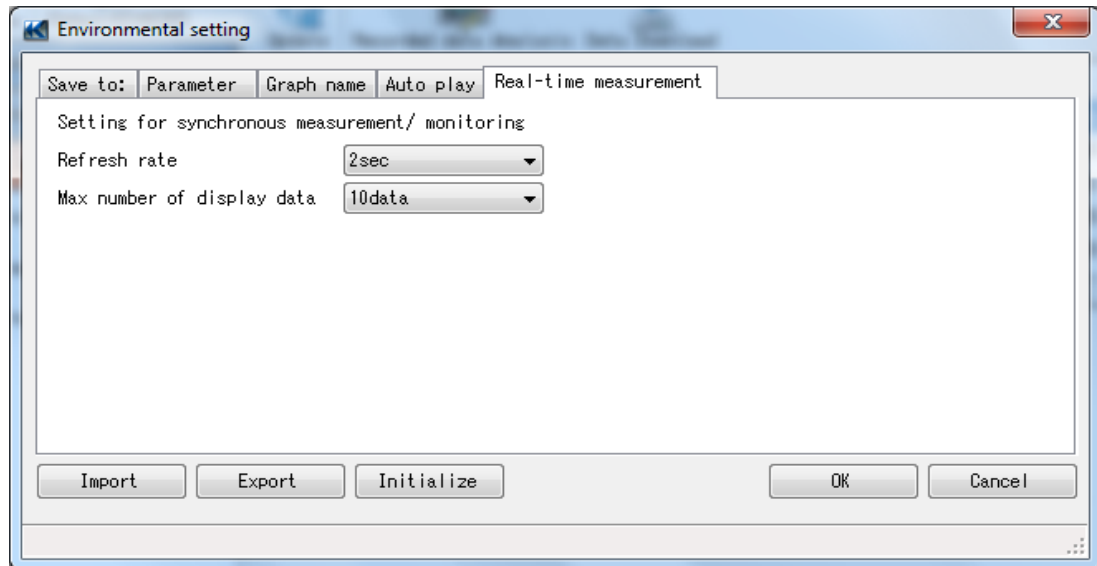
- Graph name Graph names listed in this table are used on graph.

14-4 Auto-play Tab



- Cursor stop point for auto play Cursor on graph stops at this specified point at auto-play.

14-5 Real-time measurement Tab



- Refresh rate Graphs at synchronous measurement/ monitoring will be refreshed at this rate.
- Max number of display data Max number of data displayed on graphs for synchronous measurement/ monitoring.

14-6 Import/ Export/ Initialize

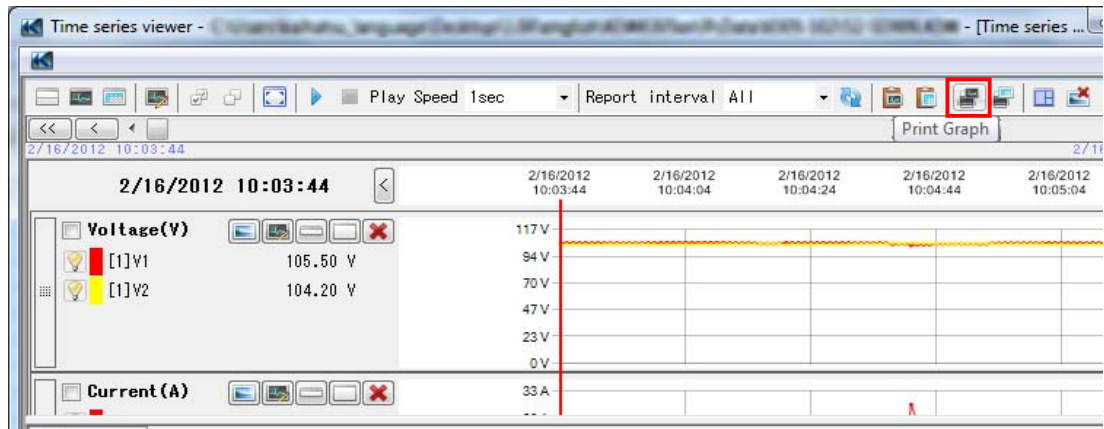
- Import Save the settings made at Environmental setting.
- Export Load the settings saved at Environmental setting.
- Initialize Restore all the environmental settings to the default.

Click "OK" when some of environmental settings have been changed.
Otherwise, the changes will not be active.

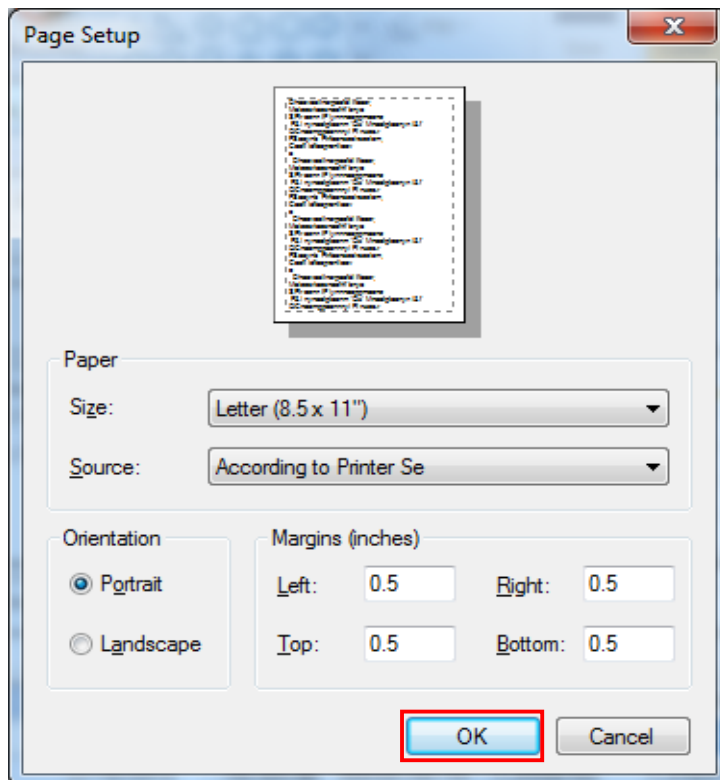
15. Print

15-1 Print procedure [Graph]

1. Click "Print Graph" on the Time series viewer.

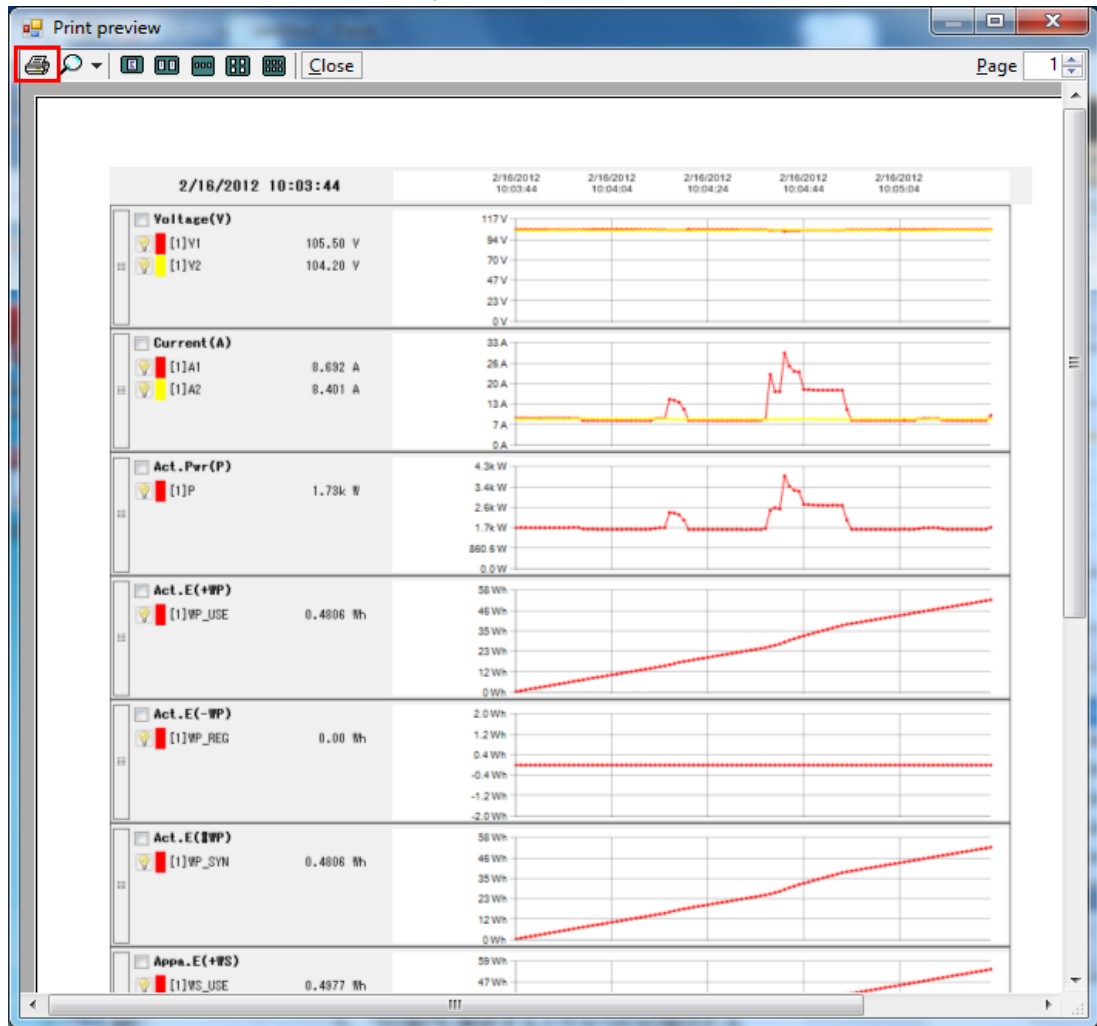


2. Check each setting displayed on Page Setup window and click "OK".

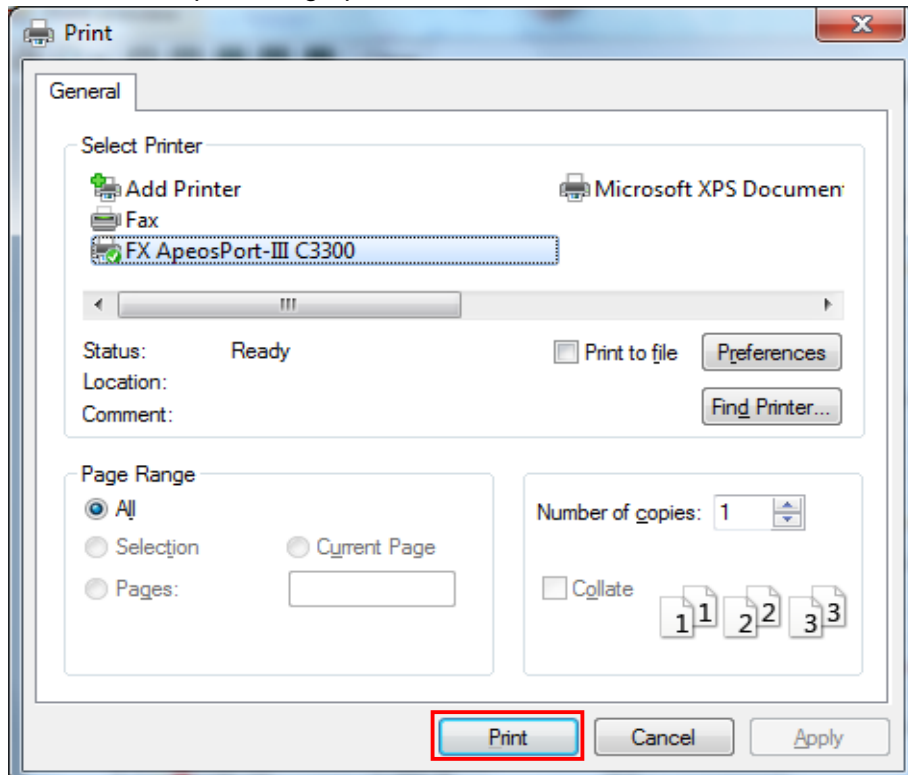


3. Print preview appears.

4. Print screen appears when clicking "Print".

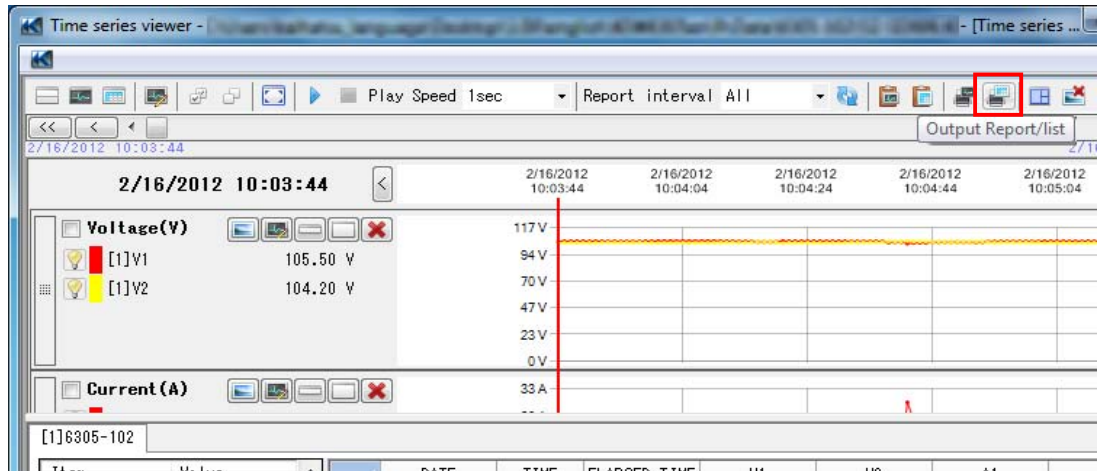


5. Click "Print" to print the graph.



15-2 Print procedure [List]

1. Click "Output Report/ list" on the Time series viewer.

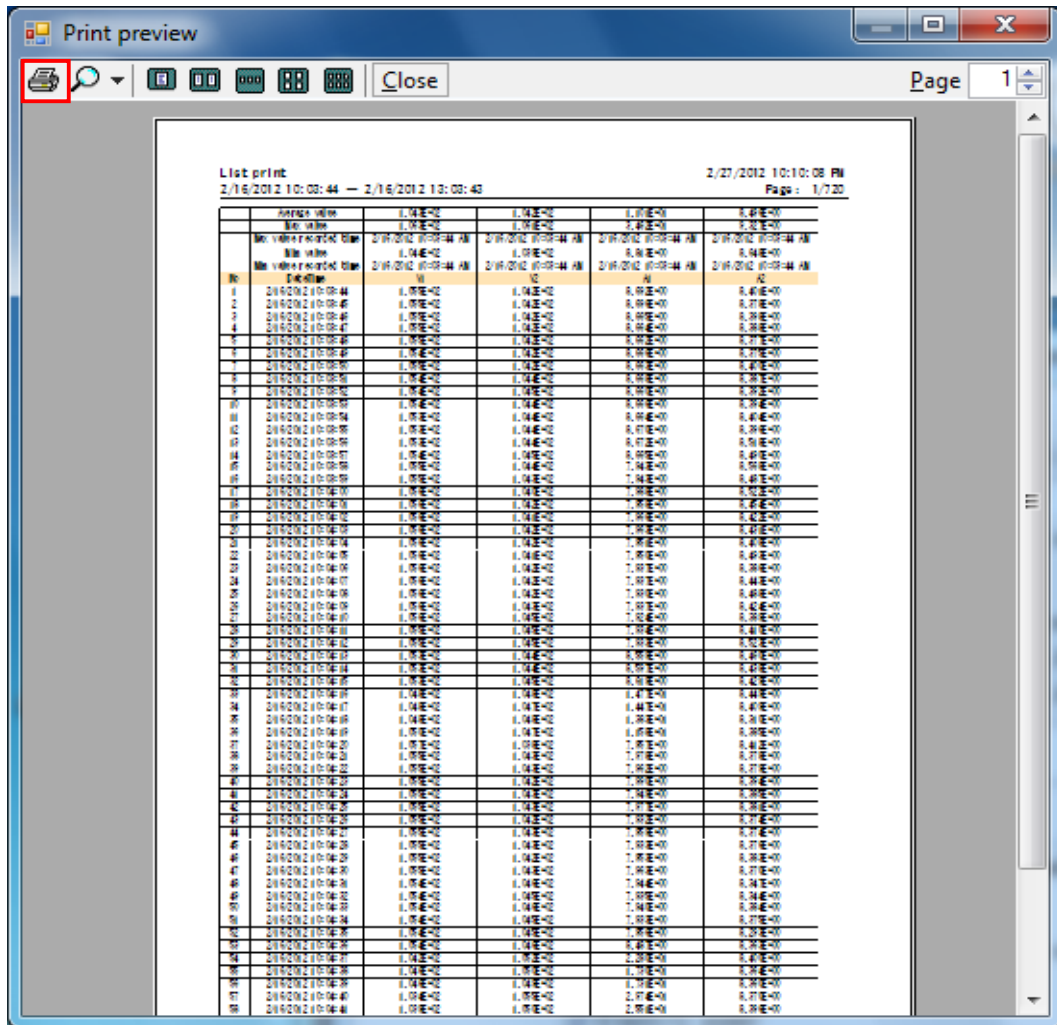


2. Click "Print list file" at the bottom of the Report/ list output window.

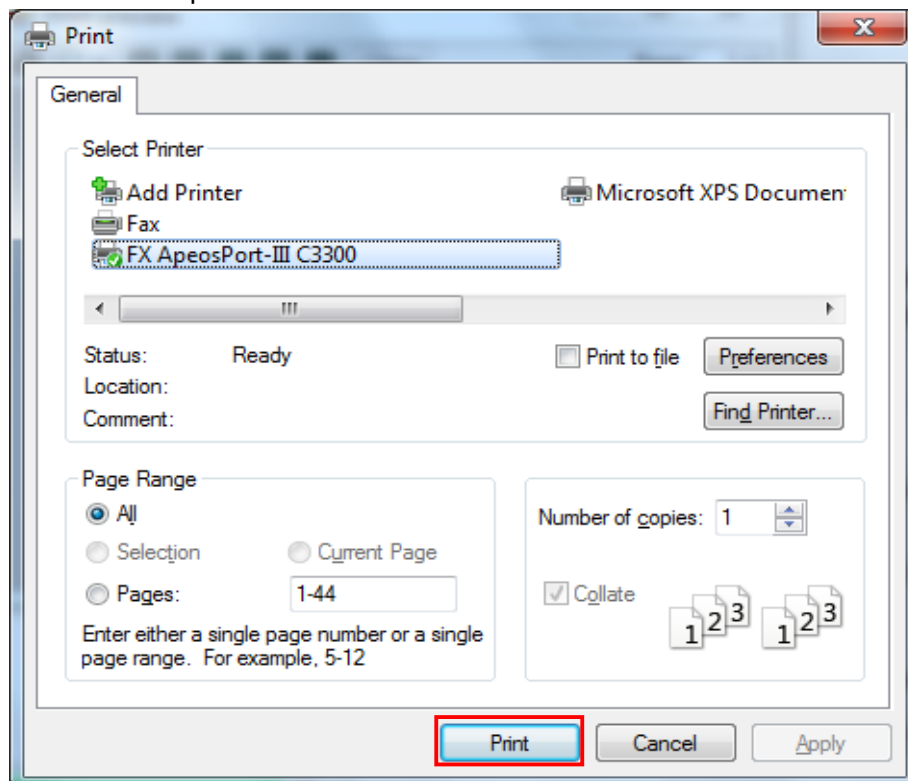
The screenshot shows the 'Report/ list output' window. The 'Print list file' button at the bottom right is highlighted with a red box. The window contains various settings for data save period, print target, unit price, and display items. The 'Data save period' is set to 3/19/2012 9:15:08 AM to 3/19/2012 9:19:49 AM. The 'Print target' is set to 3/19/2012 09:15:08 to 3/19/2012 09:19:49. The 'Electric power unit' is set to k. The 'Currency' is set to JPY (Japanese yen). The 'Unit price setting' shows Daytime JPY 0.0000 /kWh and Nighttime JPY 0.0000 /kWh. The 'Header' is 'Test Report' and the 'Footer' is '1/1'. The 'Display item' section includes checkboxes for Electric energy, Crude oil equivalent, CO2 equivalent, Cost, Electric power, and Channel parameter. The 'Print report file', 'Print list file', and 'CSV output' buttons are visible at the bottom.

3. Print preview appears.

4. Print screen appears when clicking "Print".

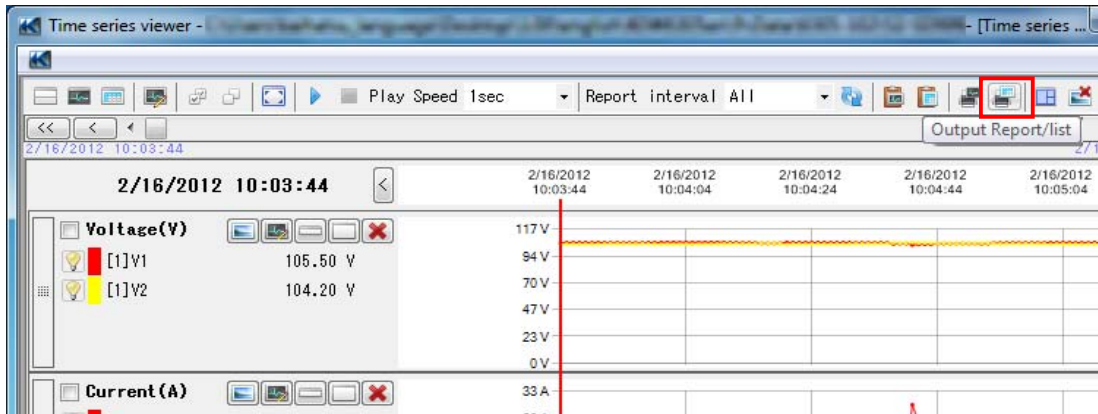


5. Click "Print" to print the list.



15-3 CSV output procedure

1. Click "Report/ list output" on the Time series viewer.



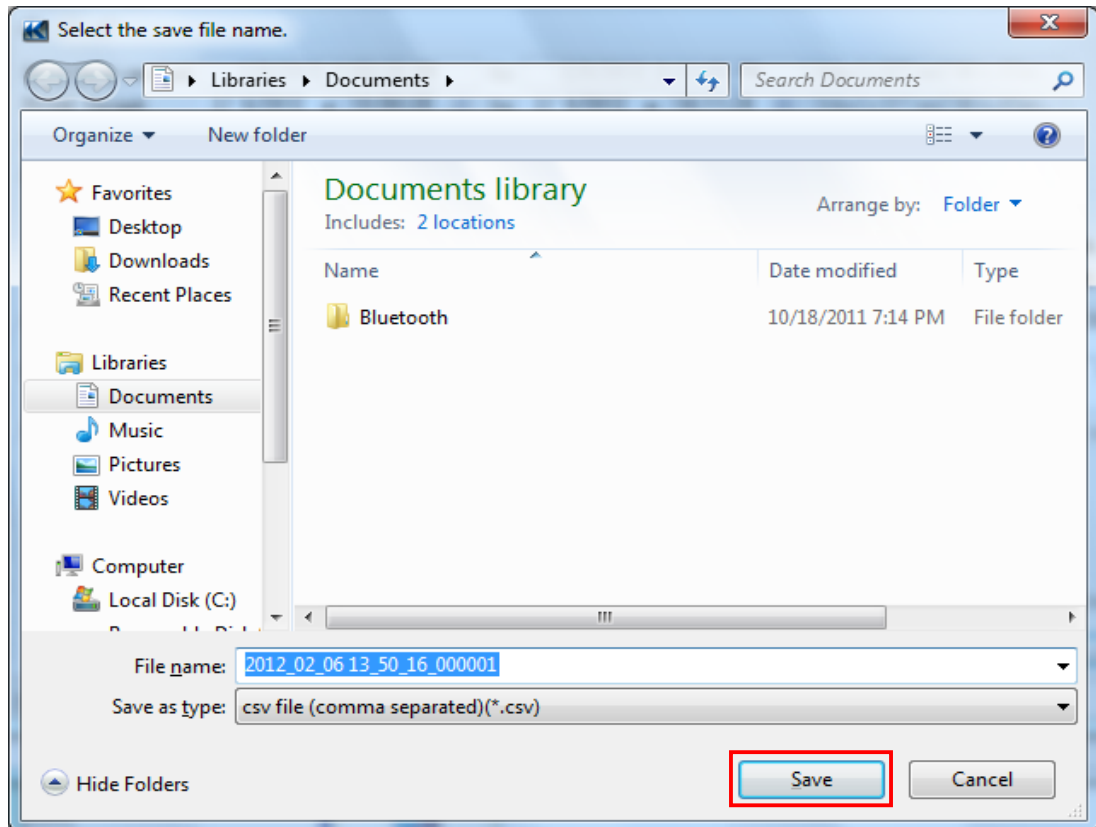
2. Click "CSV output" at the bottom of the Report/ list output window.

The screenshot shows the 'Report/ list output' window. It contains several sections for configuring the report output:

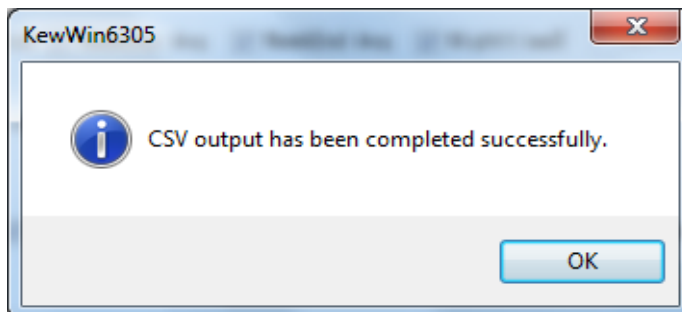
- Data save period:** 3/19/2012 9:15:08 AM to 3/19/2012 9:18:49 AM (0day(s)0Time4Min.41Sec.)
- Print target:** 3/19/2012 09:15:08 to 3/19/2012 09:18:49 (0day(s)0Time4Min.41Sec.)
- WeekEnd setting:** Sat to Sun
- Nighttime setting:** 18:00 to 08:00
- Electric power unit:** k
- Currency:** JPY(Japanese yen)
- Unit price setting:** WeekDay (Daytime: 0.0000 /kWh, Nighttime: 0.0000 /kWh), WeekEnd (0.0000 /kWh, 0.0000 /kWh)
- Header:** Test Report, 3/22/2012
- Footer:** 1/1
- Display item:** Electric energy (Total period, WeekDay Avg, WeekEnd Avg, Nighttime%), Crude oil equivalent, CO2 equivalent (Emission rate for unit: 0.000561 tCO2/kWh), Cost, Electric power, Channel parameter (Voltage, Current, Active power, Apparent power, Reactive power, Power factor)

At the bottom right, there are three buttons: 'Print report file', 'Print list file', and 'CSV output'. The 'CSV output' button is highlighted with a red box.

3. Specify the destination to save the data and enter a desirable file name, and then click "Save".

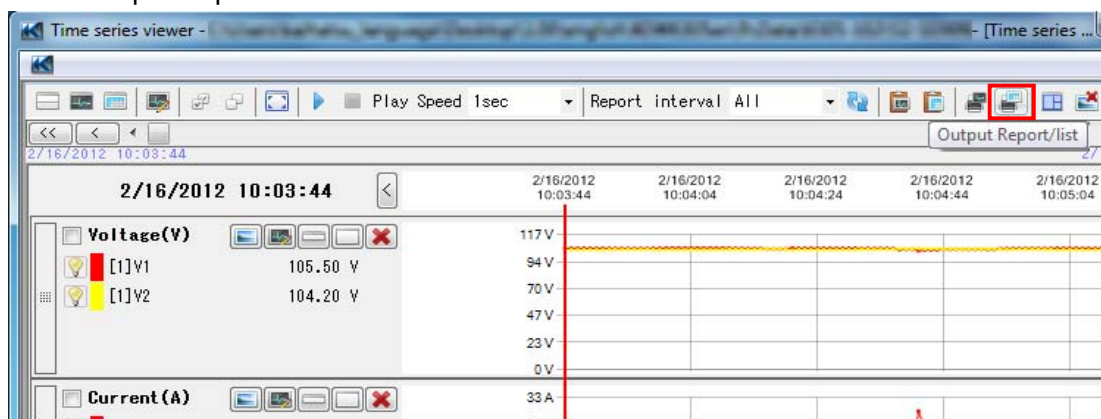


CSV output completes when the following message appears. Click "OK" and close the message.

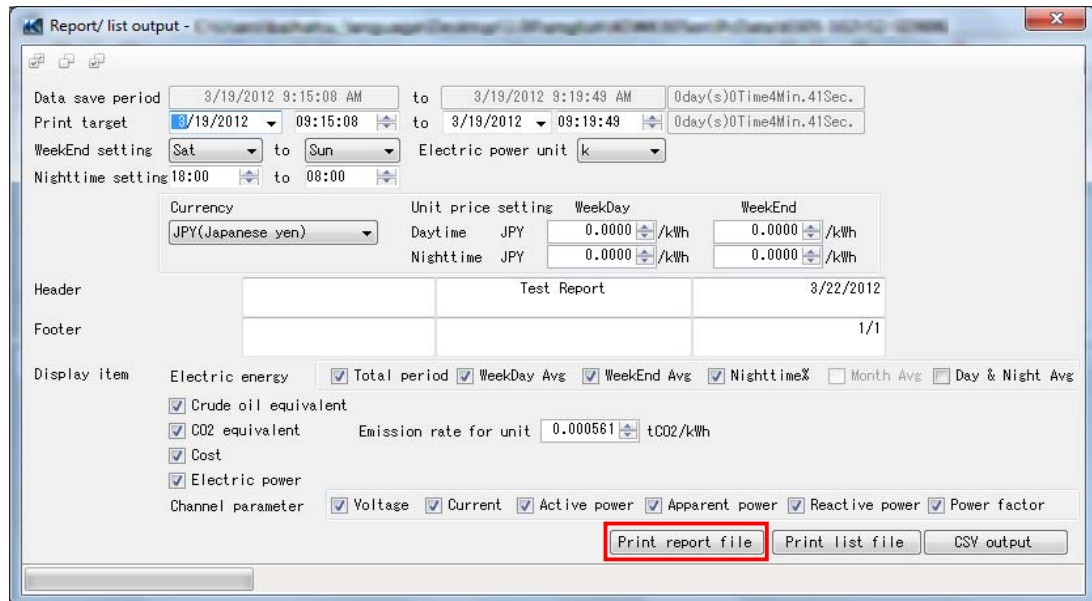


15-4 Print procedure [Report]

1. Click "Output Report/ list" on the Time series viewer.

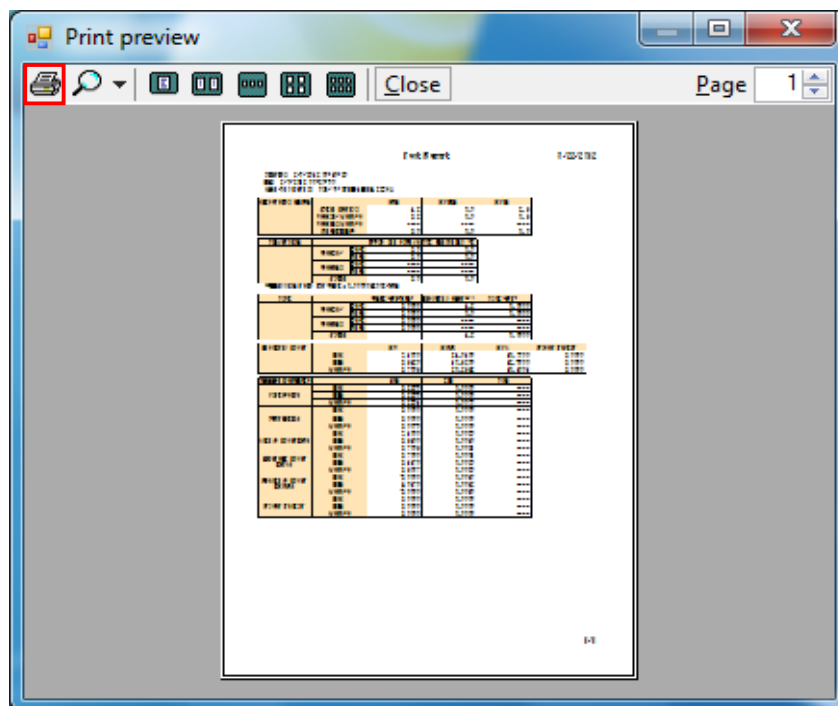


2. Click "Print report file" at the bottom of the Report/ list output window.

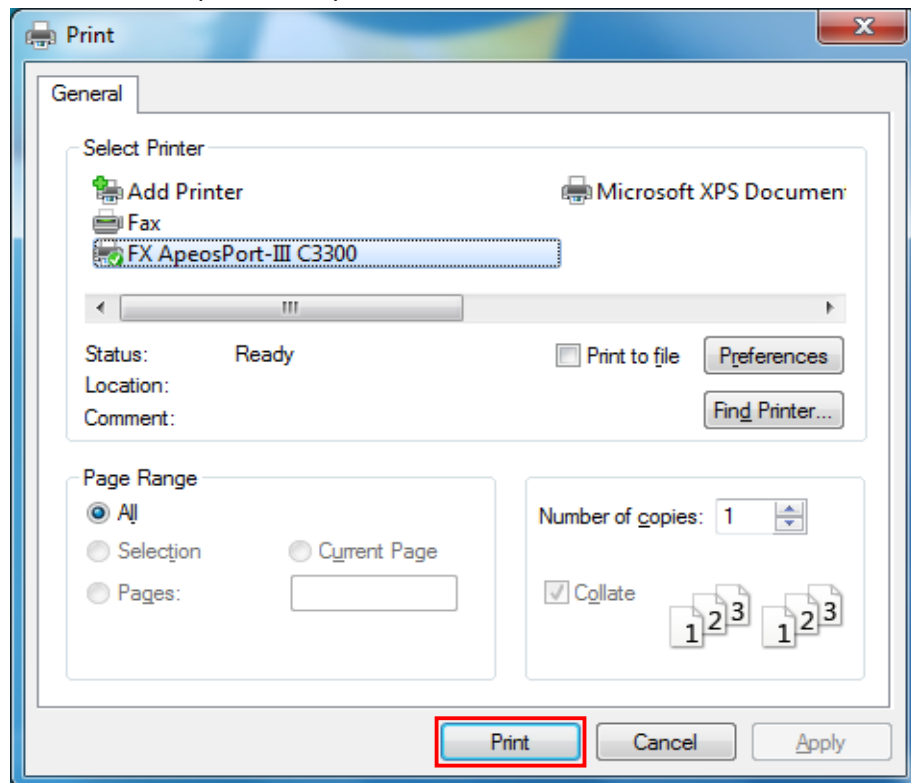


3. Print preview appears.

4. Print screen appears when clicking "Print".

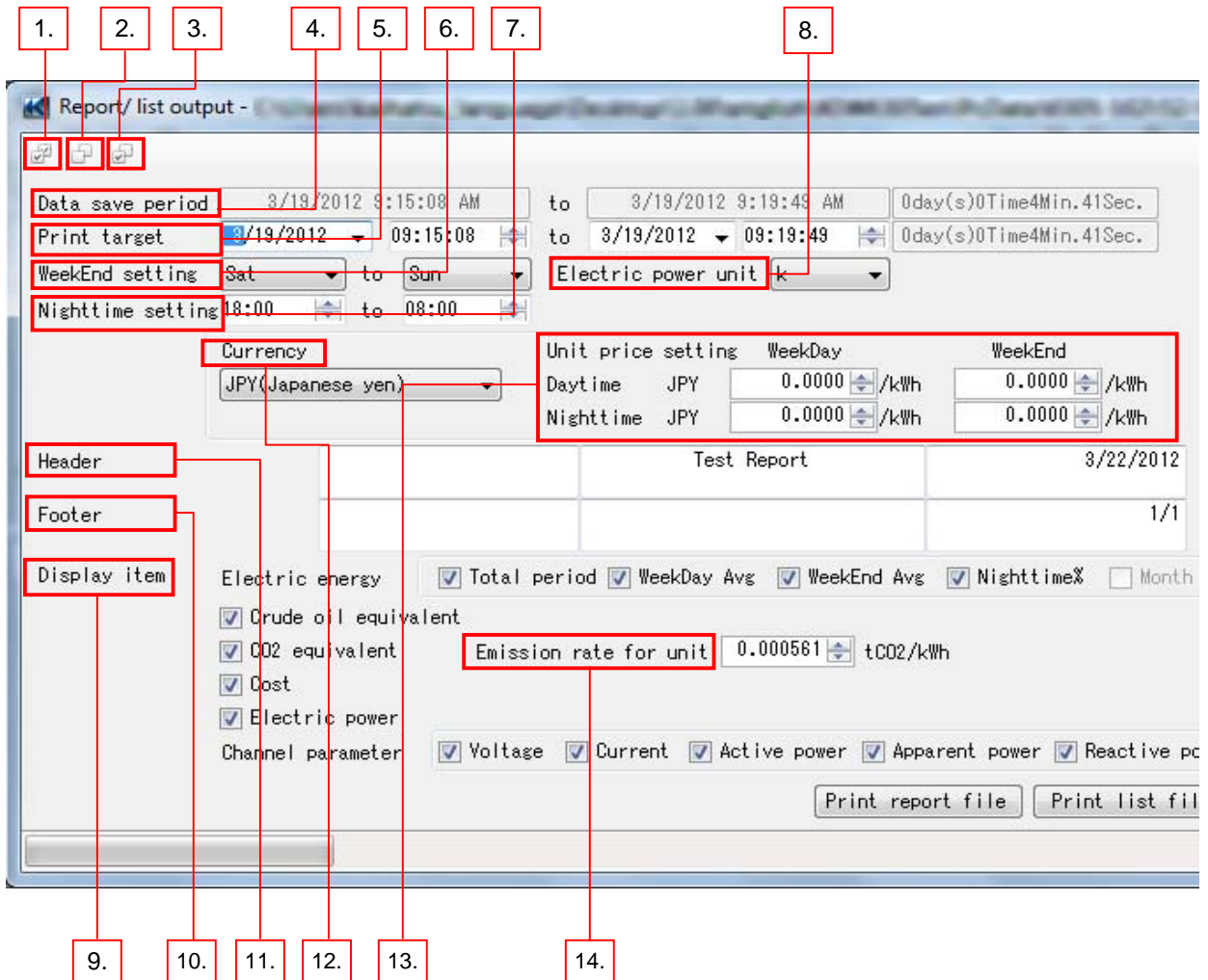


5. Click "Print" to print the report.



16. Functions available at report/ list output

Following functions are available at report/ list output.



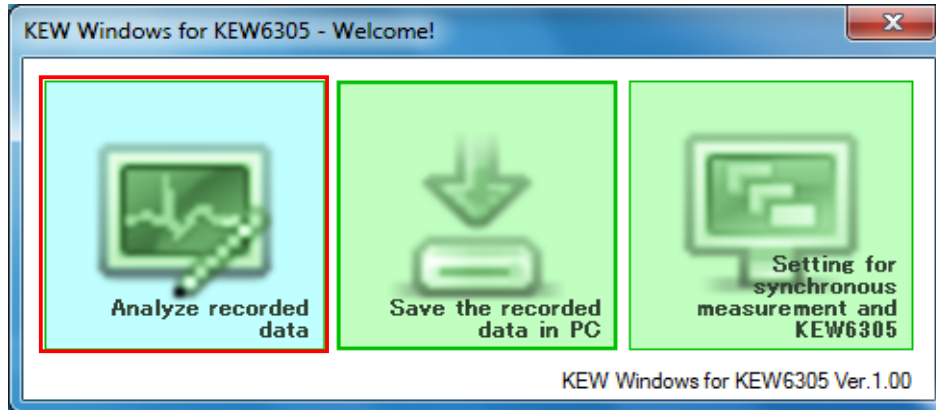
- | | |
|----------------------|---|
| 1. Check All | All of the Display item check boxes will be checked. |
| 2. Clear All | All of the Display item check boxes will be cleared. |
| 3. Default | All of the Display item check boxes, except for Month Avg and WeekDay Avg, will be cleared. |
| 4. Data save period | Total time periods from the start to the end of measurement of the loaded data. |
| 5. Print target | Report is created based on this period. |
| 6. WeekEnd setting | Select weekend days. |
| 7. Nighttime setting | Specify the night time period. |
| 8. Electric power | Select unit for electric power. |

- | | |
|----------------------------|---|
| 9. Display item | Checked items will be printed. |
| 10. Footer | To be printed at the bottom of the page. |
| 11. Header | To be printed at the top of the page. |
| 12. Currency | Select currency. |
| 13. Unit price setting | |
| Daytime/WEEKDAY | Enter the unit price for daytime of weekdays. |
| Nighttime/WEEKDAY | Enter the unit price for nighttime of weekdays. |
| Daytime/WEEKEND | Enter the unit price for daytime of weekends. |
| Nighttime/WEEKEND | Enter the unit price for nighttime of weekends. |
| 14. Emission rate for unit | Enter the emission rate for unit. |

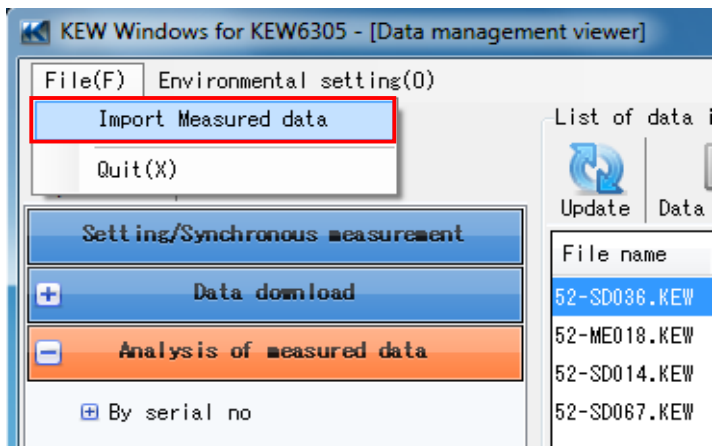
17. Measured data import

17-1 Procedure 1

1. Select "Analyze recorded data" on the Menu window.
Menu window will appear when starting the application or click "Open menu" on Data management viewer.



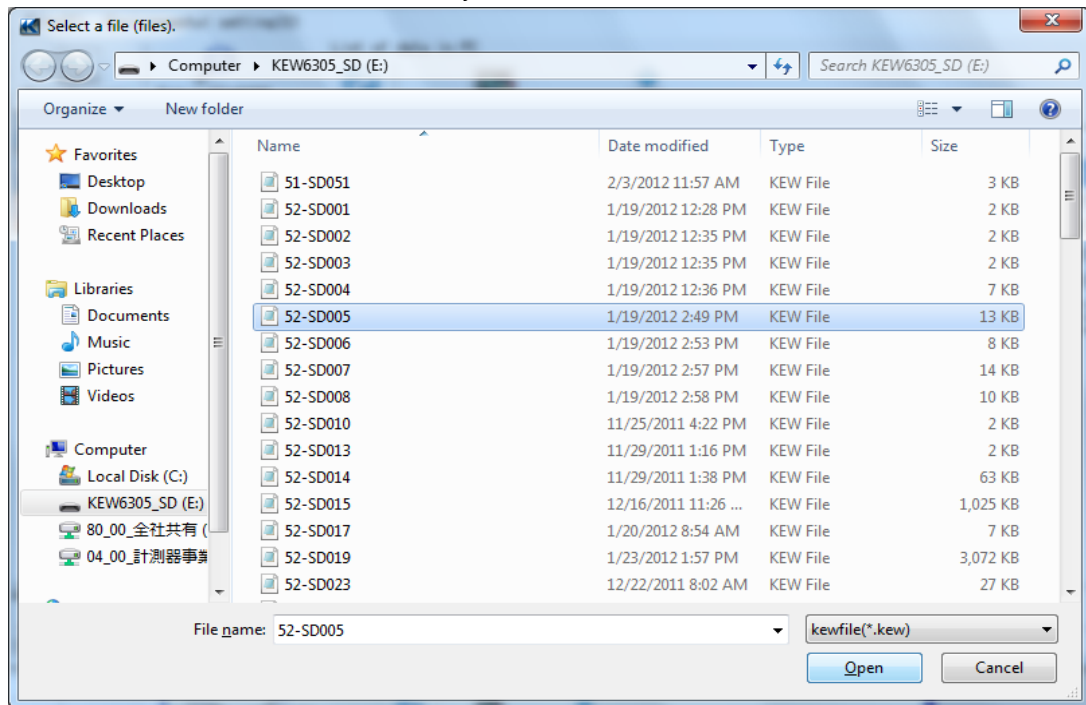
2. Click "File(F)" and then "Import Measured data" on the Data management viewer.



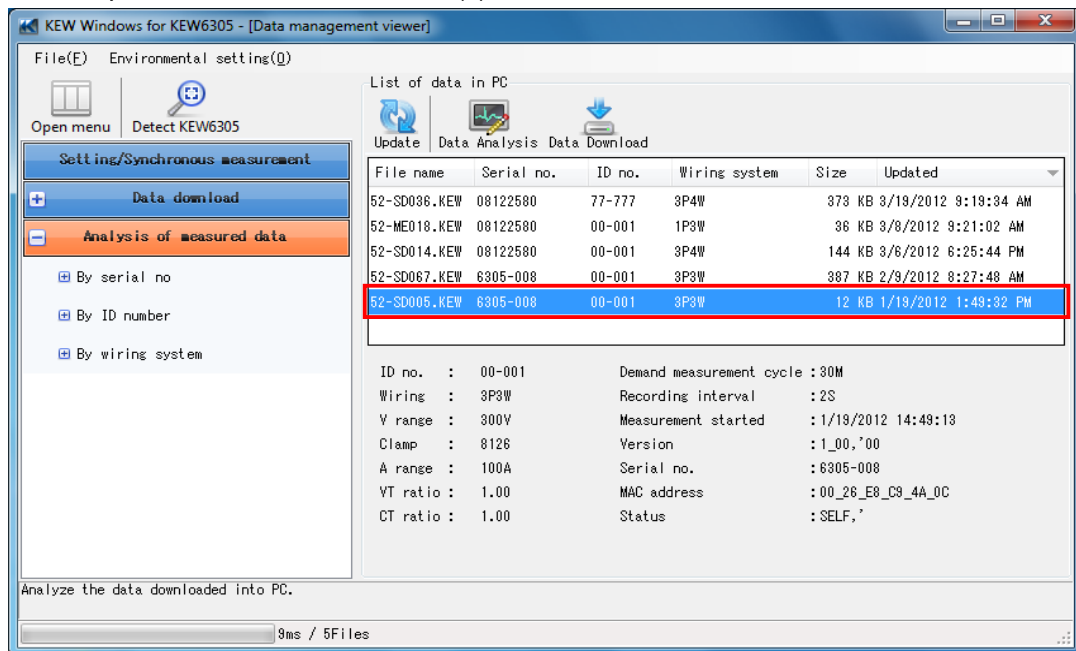
3. Select file(s) to open.

e.g. MyComputer -> KEW6305_SD(I:)->52-SD005.KEW

Names of drive and file will be different depending on your PC environment.

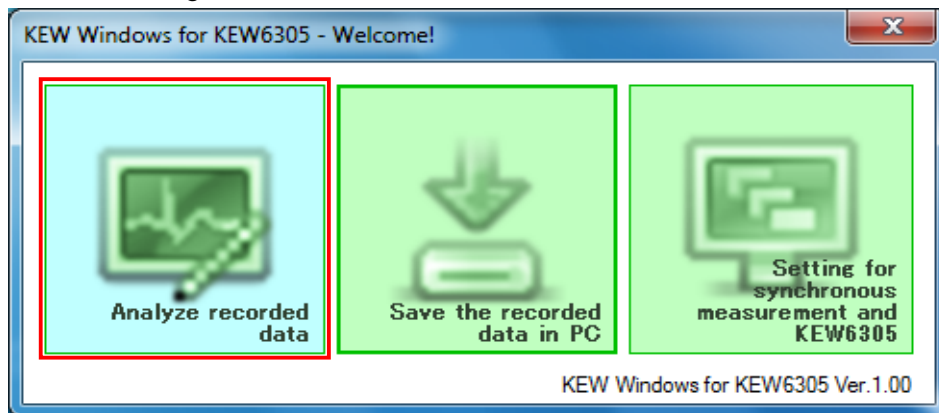


Click "Open" to add the selected file(s) on the list of data in PC.

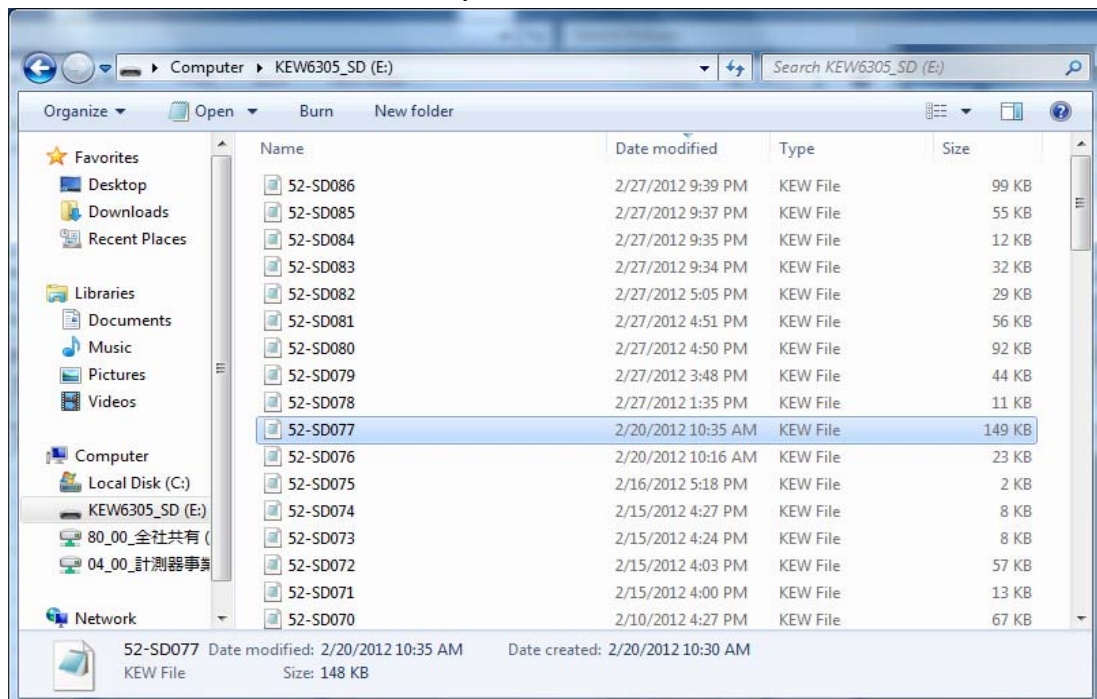


17-2 Procedure 2

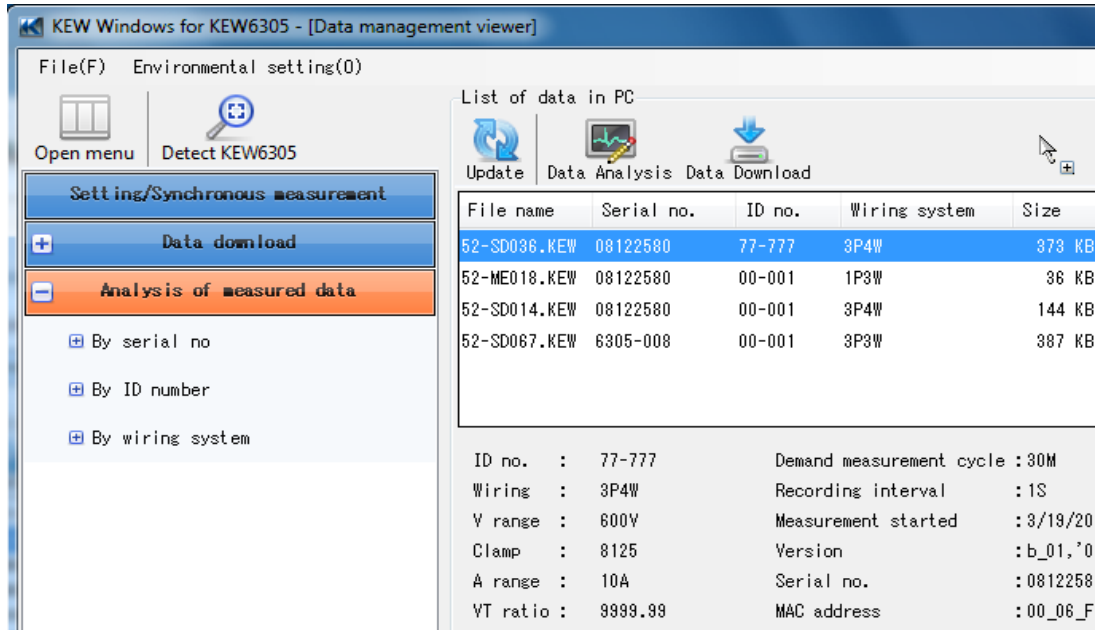
1. Select "Analyze recorded data" on the Menu window.
Menu window will appear when starting the application or click "Open menu" on Data management viewer.



2. Open the folder containing KEW6305 measured data.
e.g. MyComputer -> KEW6305_SD(F:) -> 52-SD023.KEW
↳ Names of drive and file will be different depending on your PC environment.

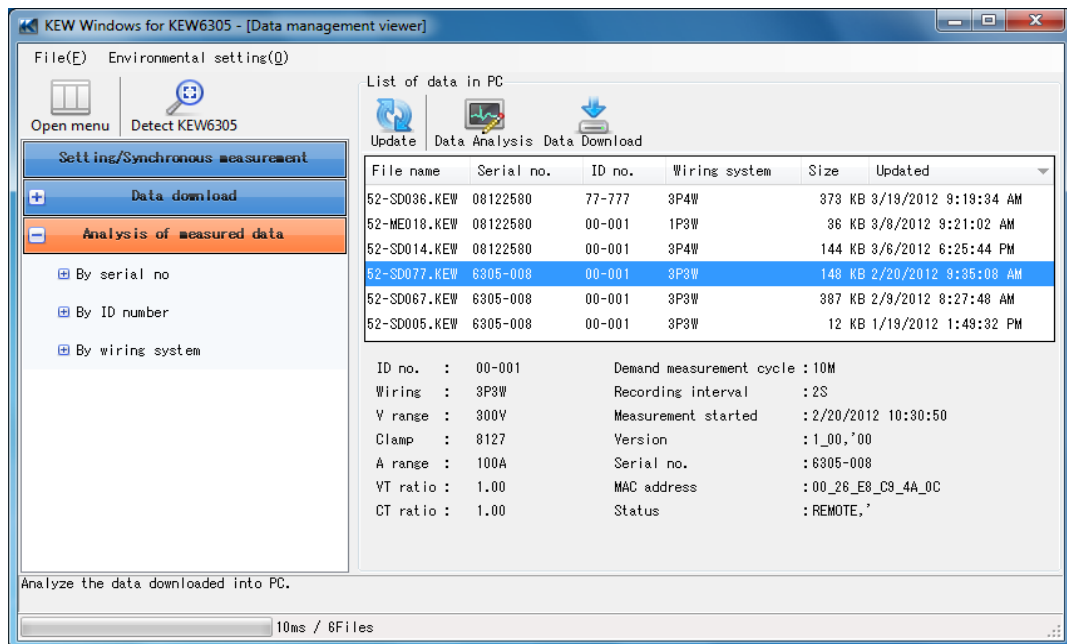


3. Select a file and drag it to the Data management viewer window.



4. Drop the file on the Data management viewer window.

The file will be added to the list of data in PC.



18. Troubleshooting

If KEW Windows for KEW6305 seems not to be working normally, please check the following points.

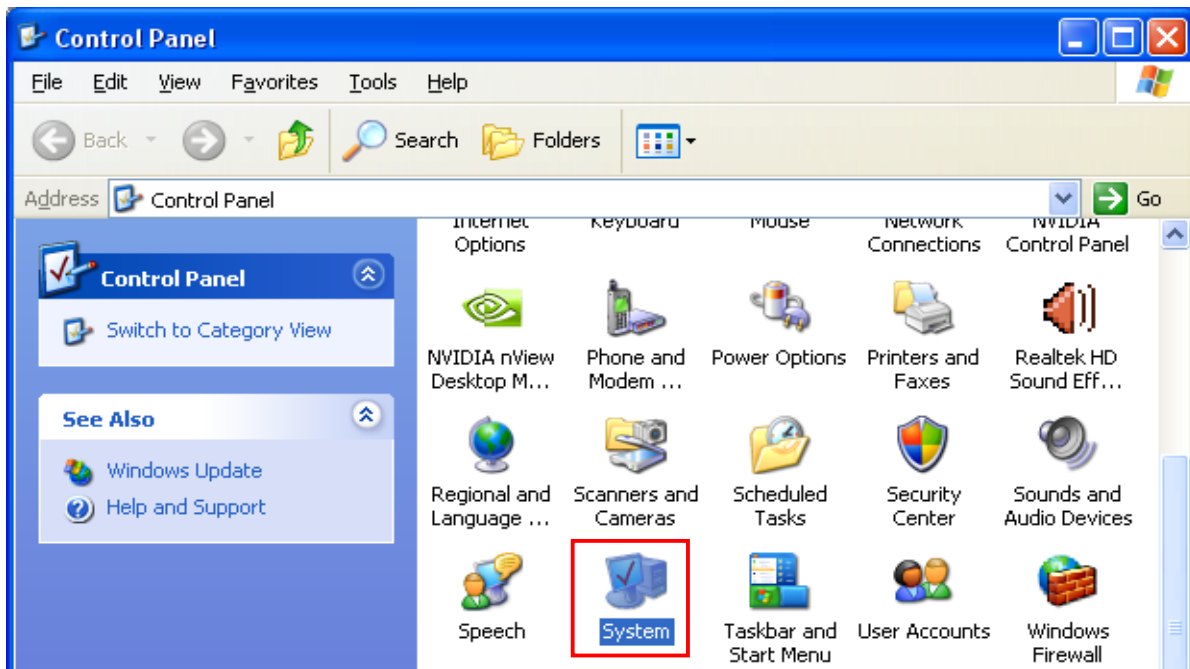
- * **KEW6305 is not displayed on the list although it has been connected with PC by using USB cable.**

Disconnect and reconnect the USB cable. Then click "Redetect".

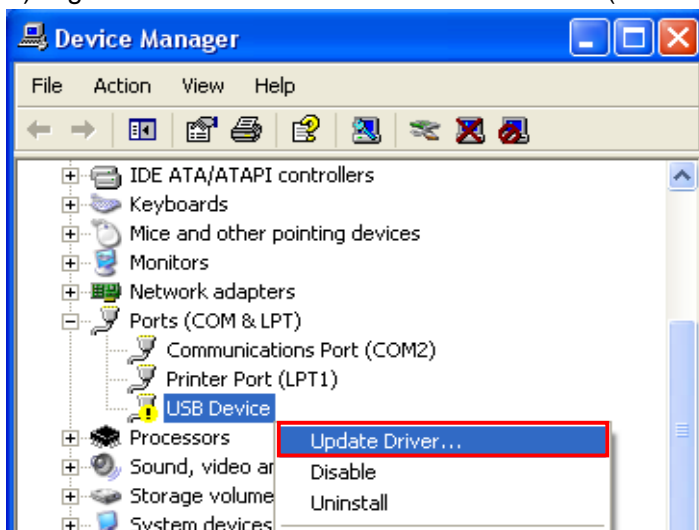
If KEW6305 were not displayed after trying above procedure, USB driver may not be recognized properly. Follow the procedure below and reinstall the driver.

For Windows XP:

1) Click "Start", "Control Panel" and then "System".



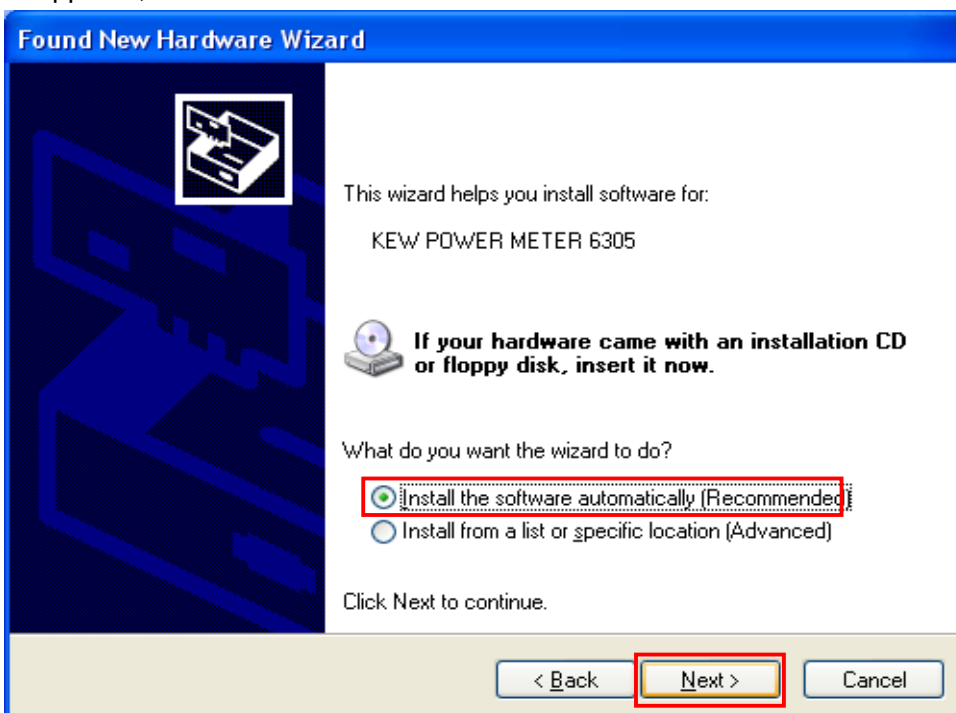
2) Right click on the "USB Device" under "Ports (COM & LPT)", and then click "Update Driver".



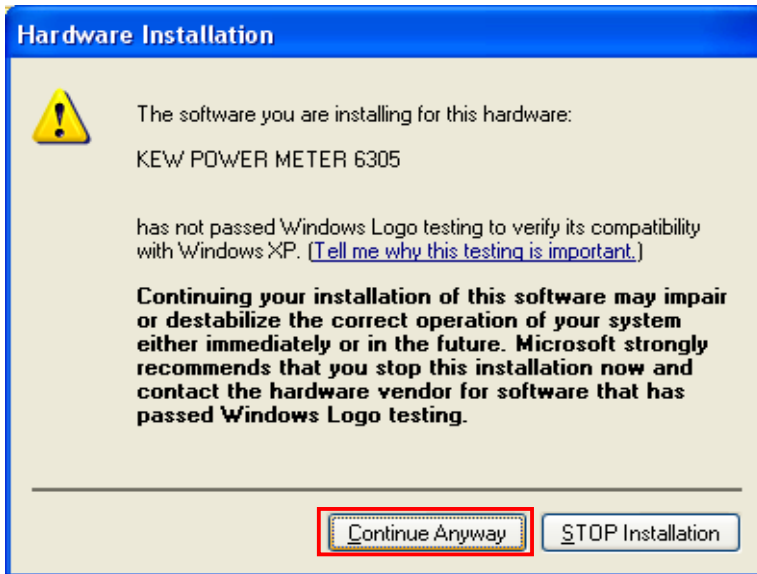
- 3) Then the following window will appear.
Select "No, not this time", and click "Next".



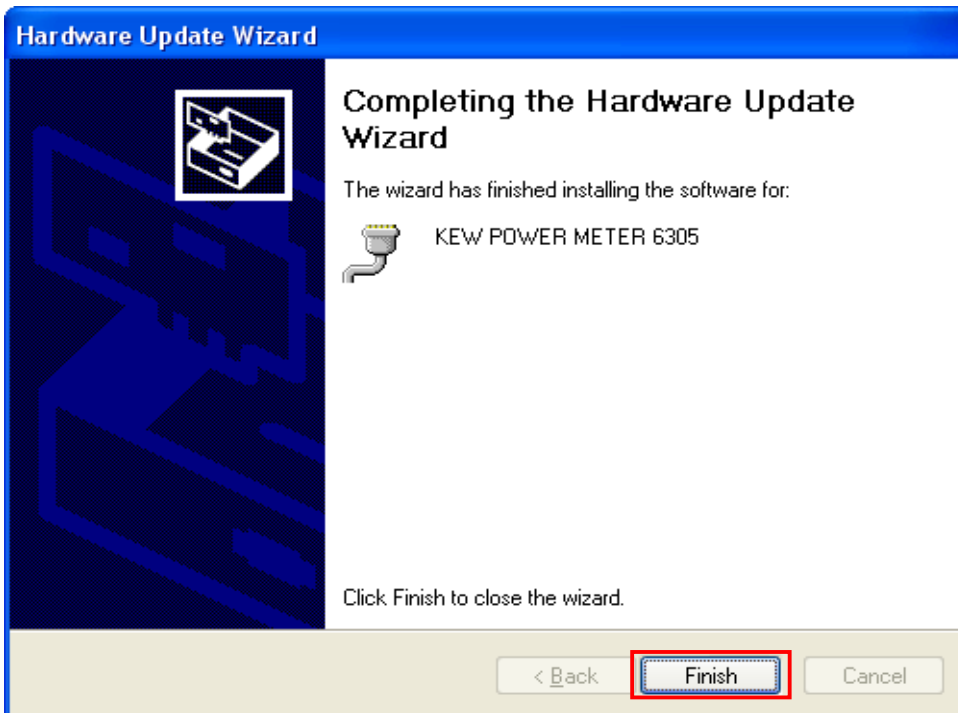
- 4) Select "Install the software automatically (Recommended)" when the following window appears, and then click "Next".



5) If the following warning message appears, click "Continue Anyway". (It is no problem to continue installing because operation has already been verified.)



6) Click "Finish" when the following window appears.



When the installation has been successfully completed, the installed driver "KEW POWER METER 6305" will be displayed under "Ports (COM & LPT)". Close the window and start the supplied PC application.



If installation fails even though following above procedure, insert the supplied CD into PC and right click on the CD drive. Then click "Open" on the displayed list. Then you can see "DRIVER" folder. Start "kewusb100_setup.exe" to start installation. Please refer to the Installation manual for further details.

For Windows7/ Vista:

Insert the supplied CD into PC and right click on the CD drive. Then click "Open" on the displayed list. Then you can see "DRIVER" folder. Start "kewusb100_setup.exe" to start installation.

Please refer to the Installation manual for further details.

* **KEW6305 is not displayed on the list although it has been connected with PC via Bluetooth.**

Check the pairing connection is established or not.

For the pairing procedure, please refer to the manuals of your Bluetooth devices or "Open" on the start menu of KEW Windows V2.

* **Communication between KEW Windows for KEW6305 and KEW6305 unit fails while using USB communication.**

If communication processes such as synchronous measurement, data download or instrument setup cannot be done while using USB communication, click "Detect KEW6305". Then disconnect and reconnect the USB, and click "Detect KEW6305".

Check that the serial no. of the connected KEW6305 is displayed under "Data download".

* **During a synchronous or monitoring measurement, graph is not refreshed at the selected interval.**

Graph may not be refreshed at the selected interval depending on your PC environment.
(e.g.: Graph is refreshed at every 3 sec while the preset refresh rate for real-time measurement is 2 sec.)

Actual refresh rate is displayed at lower left on the Time series viewer window. (Unit: ms)

When setting the refresh rate, it should be longer than the one displayed at the lower left of the window.

To speed up the refresh rate, reduce the max number of display data at environmental setting.
It takes longer time if the max number of display data is large.

* **Downloading time**

Downloading time will be longer when file size becomes bigger.

It is recommended to use SD card to copy big data to PC.

USB transfer rate : approx. 27sec. for transferring internal data of 3MB

Bluetooth transfer rate : approx. 10.5min. for transferring internal data of 3MB

Please refer to "17. Measured data import" describing how to import files to PC by using SD card reader.