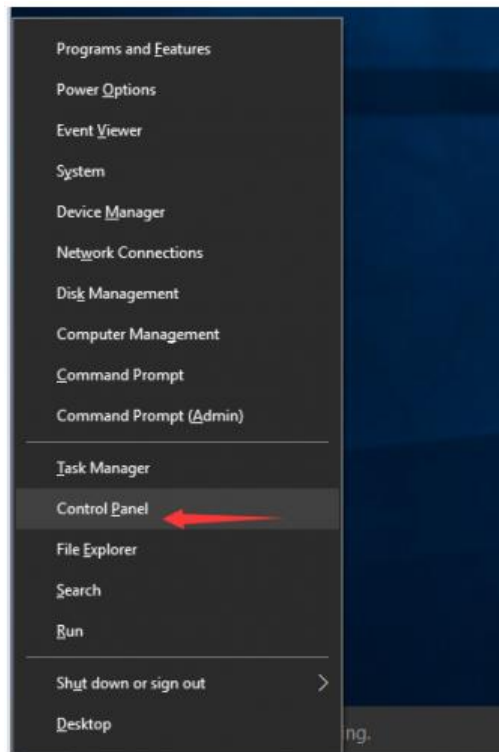


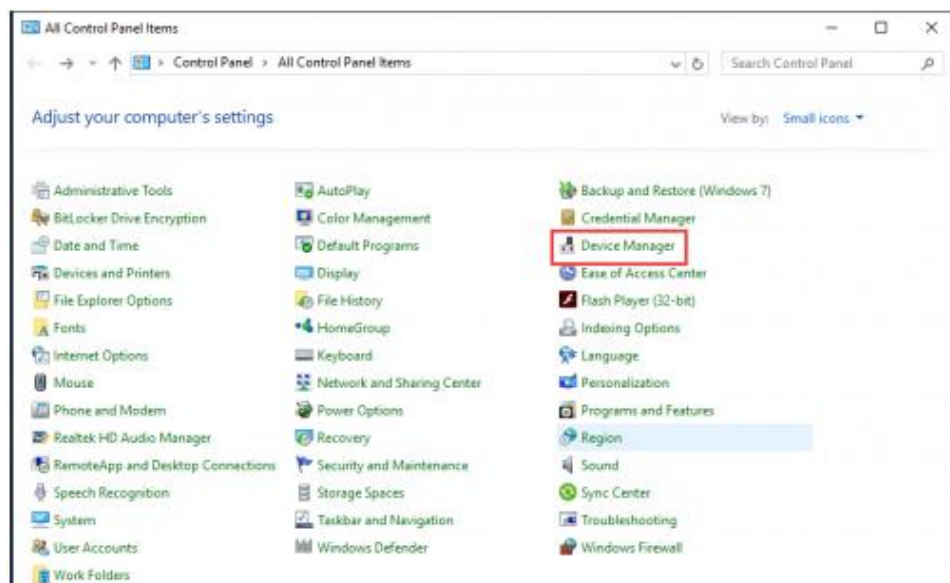
Install Manually Update Drivers in Windows 10

1. Driver updates are automatically downloaded and installed through Windows Update.
2. While it's likely you already have the most recent driver, if you're having trouble with a device, you can try fixing it by updating the driver or reinstalling it following the steps below:
 - a. Open Windows 10 Control Panel by pressing **Win+X** (Windows key and X key) at the same time and clicking **Control Panel**.

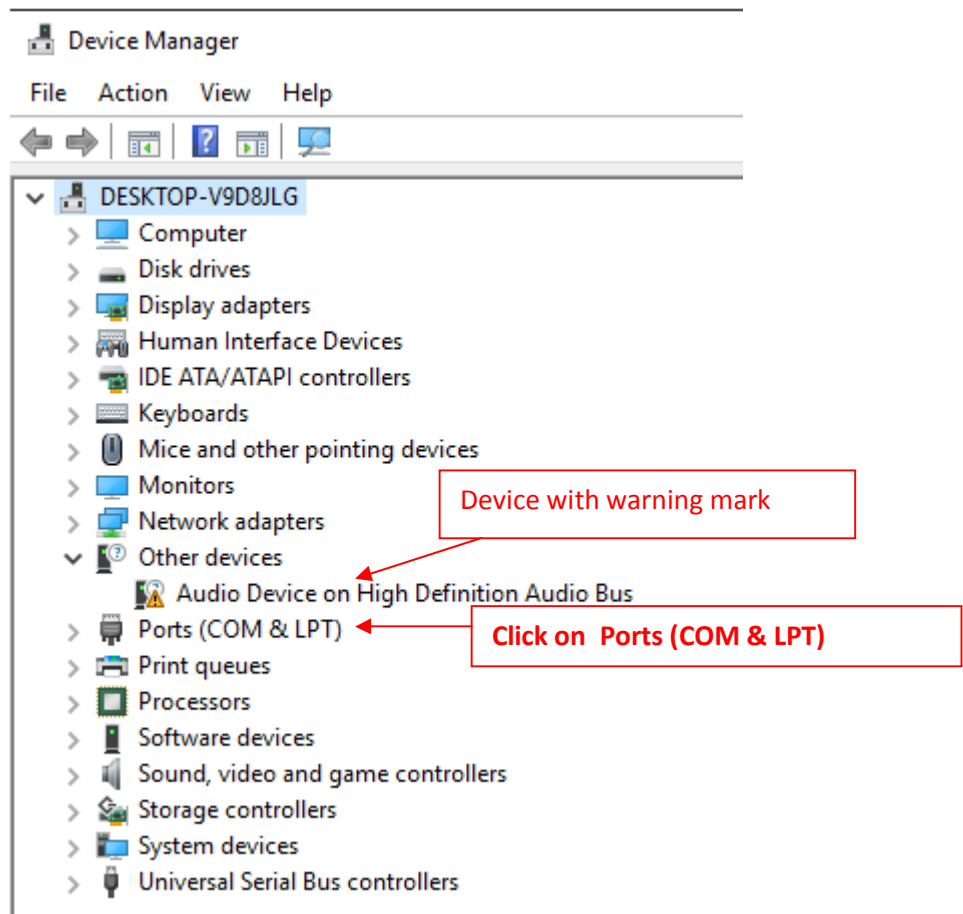


Select the **Start** button (Microsoft icon on the left and lower corner), type **Device Manager**, and select it from the list of results.

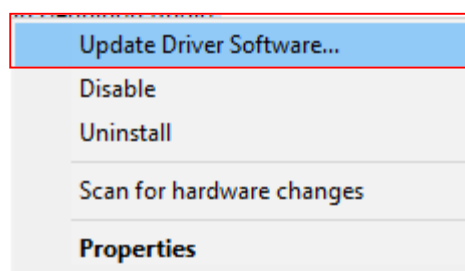
- b. View by **Small icons**. Click **Device Manager**.



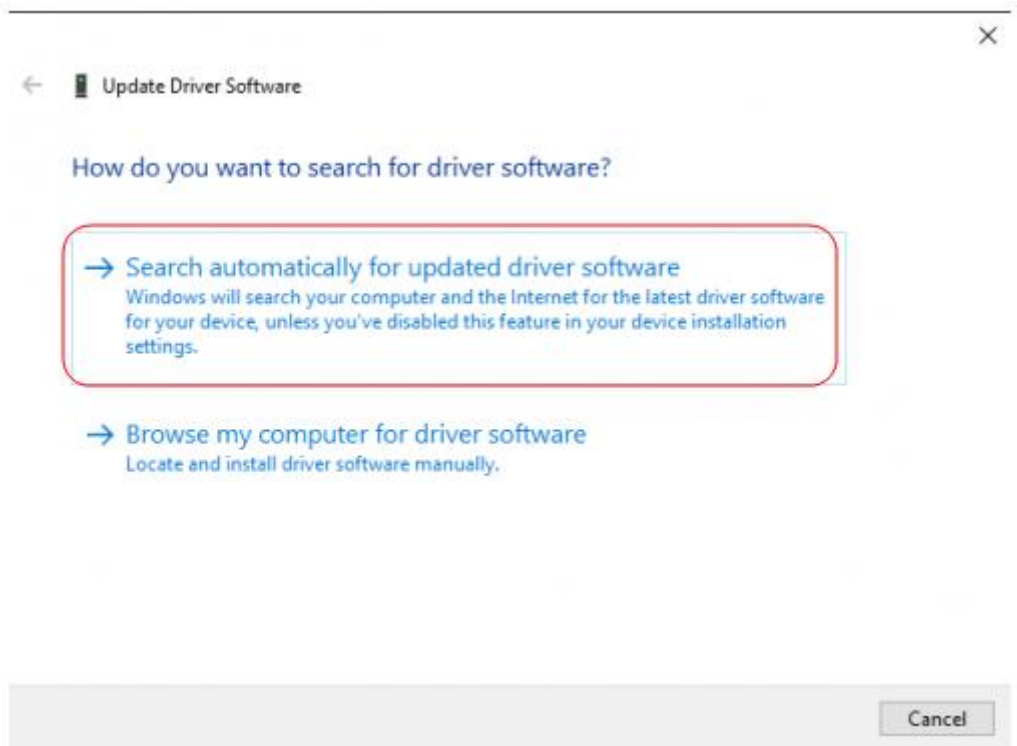
- c. Expand Device Manager window and find the device you wish to update the driver for. A device with problem, you can see a yellow mark next to the device name. Click with the right button of the mouse on Ports (COM & LPT), and select **Update Driver Software**. See picture below



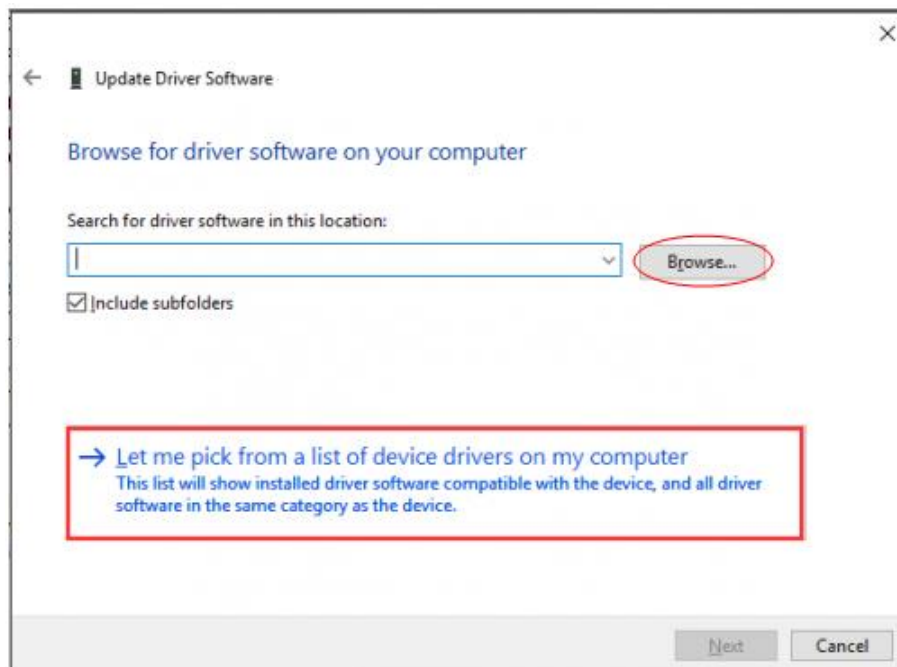
- d. Click with the right button of the mouse on Ports (COM & LPT), and select **Update Driver Software**. See picture below



- e. In the pop-up window, you will see two options. Click **Browse my computer for driver software**. Select **Search automatically for updated driver software**.



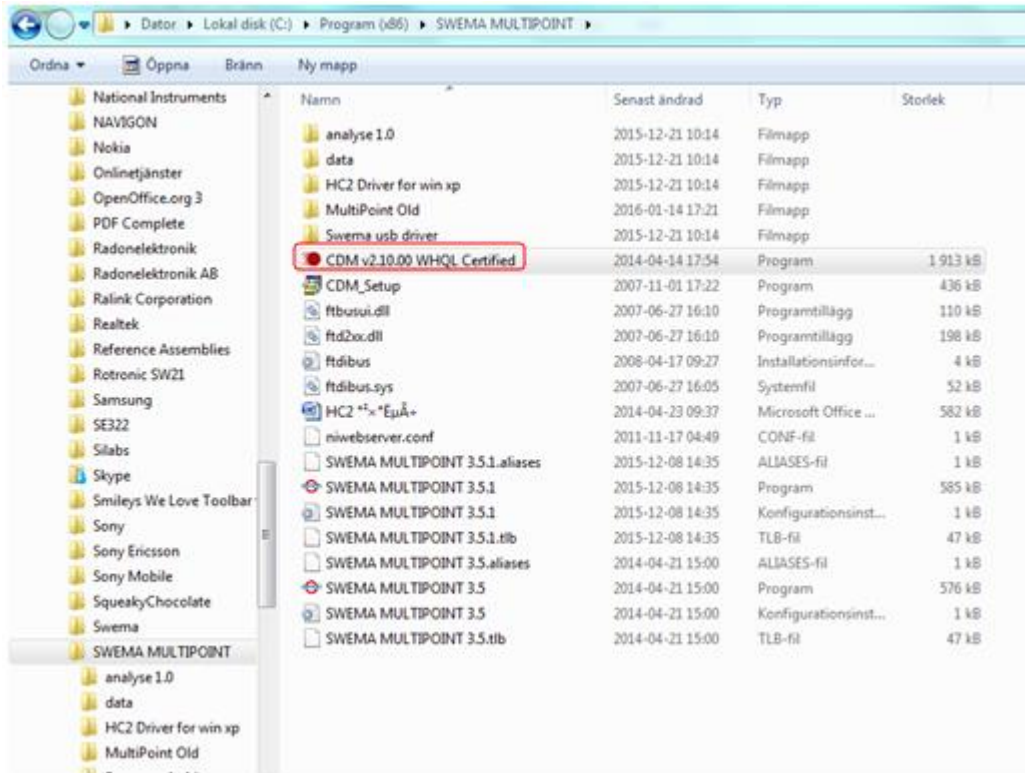
- f. Click on **Browse** or on **Let me pick from a list of device drivers on my computer** and **Next** to the next step



Swema drivers is found in C://Program(x86)/Swema

In the example below, the Driver CDMö is found in:

C://Program(x86)/SWEMA MULTIPOINT/CDM v2.10.00 WHQL Certified



g. Click on the folder **CDM v2.10.00 WHQL Certified**

h. In the following window Click on Extract



- i. If Windows doesn't find a new driver, you can try looking for one on the device manufacturer's website and follow their instructions.
- If these steps don't work, try reinstalling the driver: Open **Device Manager**, right-click (or tap and hold) the name of the device, and select **Uninstall**. Restart your PC and Windows will attempt to reinstall the driver.