



- Sound Level Meter
- Real Time Analyzer
- Audio Analyzer
- FFT Spectrum Analyzer
- STIPA Analyzer

XL2

HANDHELD AUDIO AND
ACOUSTIC ANALYZER



Made in Switzerland 



INTRODUCTION

The hand-held XL2 Analyzer is a powerful Sound Level Meter, a professional Acoustic Analyzer and a precision Audio Analyzer in one instrument. Easy operation and countless applications distinguish this quality Swiss product.

Switch on - Good to go

Get the job done, on time! The instrument is ready to measure literally seconds after you press the power button. The intuitive navigation and flexible user interface assist in simplifying every task. The XL2 provides an extensive range of measurement functions.

Ready for any Challenge

The XL2 is developed according to user needs, and provides reliable measurement solutions for sound system installations, noise control, architectural acoustics, evacuation systems, live events, quality inspection and occupational health and safety. Discover an instrument you can trust for specialist applications.

APPLICATION AREAS

- Installed Sound
- Life Safety Systems
- Community Noise
- Live Sound
- Industrial and Aerospace
- Building Acoustics
- Quality Control



SOLUTIONS

Installed Sound and Evacuation Systems

XL2's functionalities provide contractors and audio engineers with a comprehensive set of diagnostic and measurements tools. The XL2 Analyzer is perfectly tailored for installing, commissioning and troubleshooting sound and audio systems in cinemas, studios, broadcast and fixed installations. Whether for large commercial spaces, multi-purpose rooms, teleconference rooms, airports or stadiums, the XL2 provides the measurement capability. The optional STIPA measurement quantifies the speech intelligibility of public address and voice evacuation systems.

- » Use the Exel Set with XL2, Measurement Microphone, NTi Audio TalkBox and accessories according your application requirements.

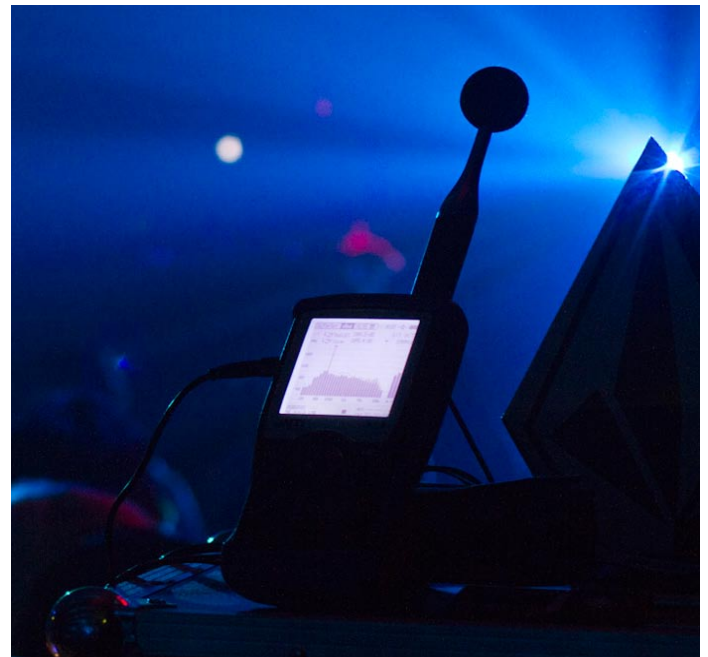


Live Sound: Comply with Sound Limits

Set up PA systems and optimize the frequency response with the XL2 Analyzer. The reference memory allows you to match the sound of both the left and right speaker arrays, as well as the monitors. Confirm that all speakers have the same polarity. Analyze the reverberation time to verify the room characteristics. Measure delay line time settings, and improve the total listening experience in the audience area.

The XL2 Analyzer helps you comply with sound limit regulations. Simply power up the XL2 Sound Level Meter, select the pre-configured measurement profile and press start. The tricolor Limit LED gives you the green light when you are within the prescribed limit. Load the logged data into a report template and play the XL2 audio file to review any periods when the sound was over the limit, such as when the audience applause was too loud.

- » Use the Exel Set for Live Sound.





Noise Monitoring

The XL2 Sound Level Meter provides the dedicated solution for industrial, community and occupational noise monitoring. All measurement data is stored on the SD card or, with the Remote Measurement option, directly on a connected computer. Simultaneously the XL2 may record the linear wav-file. The event recorder functionality triggers the measurement by programmable level thresholds or manually by the external input key pad. An additional scheduler function triggers measurements at pre-determined times.

- » Use the Exel Set with XL2 Sound Level Meter, M2230-WP Outdoor Measurement Microphone, Extended Acoustic Pack and Type Approval Option (as required).

Building and Room Acoustics

The XL2 Analyzer provides the handheld solution for airborne and structure borne sound insulation measurements, speech intelligibility and room acoustics. Noise levels and reverberation time are measured in accordance with ISO140. XL2 offers detailed evaluation of the acoustic room response with a high resolution Zoom-FFT and an RTA with 1/1 up to 1/12 octave band spectrums.

- » Use the Exel Set with XL2 Sound Level Meter, M2230 Measurement Microphone, Extended Acoustic Pack, Spectral Limits Option and Type Approval Option (as required).



PASS/FAIL Tolerance Templates in Quality Control

The XL2 with Spectral Limits Option offers an efficient, low-cost solution for industrial quality control. Measurements can be compared against a reference curve with customized tolerance bands. The pass/fail results are provided by the internal tri-color LED or an optional external Stack Light. Integration tools for automation and remote operation are provided.

- » Use the Exel Set with XL2, M2211 Measurement Microphone and Spectral Limits Option.

Sound Level Meter



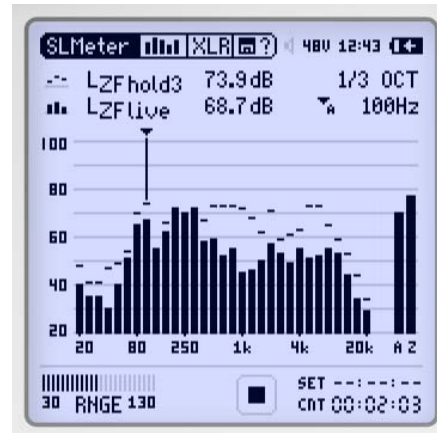
The XL2 provides a precise sound level meter for events and environmental noise monitoring. Numerous measurement variations are simultaneously available. Actual level, Lmin, Lmax, Leq may be measured in combination with frequency weighting A, C or Z and time weightings fast, slow and optional impulse. All results are simultaneously available.

Polarity, Delay, Scope

Further functions measure the polarity of speakers, the delay time for setting up delay lines and view the input signal on an auto-ranging oscilloscope.

FUNCTIONS

Real Time Analyzer



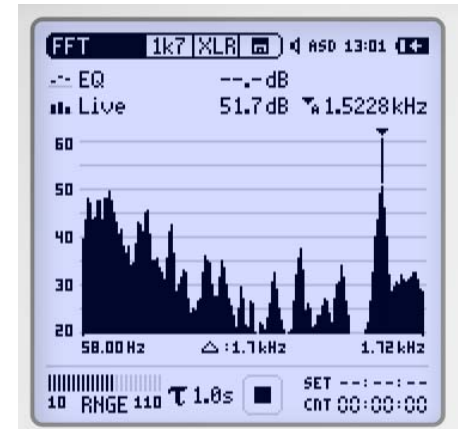
The RTA perfectly suits tasks such as optimization of sound systems and rooms. The XL2 measures and logs wideband values and the real time spectrum in 1/1 or 1/3 octave-band resolution.

Audio Analyzer



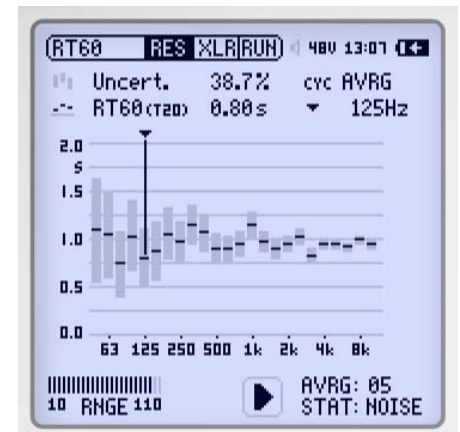
The XL2 with balanced XLR and unbalanced RCA inputs offers a comprehensive, high performance audio analyzer. It simultaneously measures balance, level, distortion (THD+N) and frequency.

FFT Analyzer



The real-time FFT is the ideal tool for visualization of comb filters and narrow band effects. It measures the actual level and the averaged level Leq in three ranges over the entire audio band.

RT60 Reverberation Time



Measure the energy decay with automated triggering using an impulse signal or gated pink noise as signal source, and determine if the room fulfills the RT60 requirements.

Speech Intelligibility STIPA Option



The XL2 Analyzer measures the speech intelligibility according to the latest revision of standard IEC 60268-16. It offers ambient noise correction and automated averaging for repeated measurements. The XL2 displays the speech transmission index (STI) and the common intelligibility scale (CIS), accompanied by the individual levels and modulation indices of the seven octave bands.

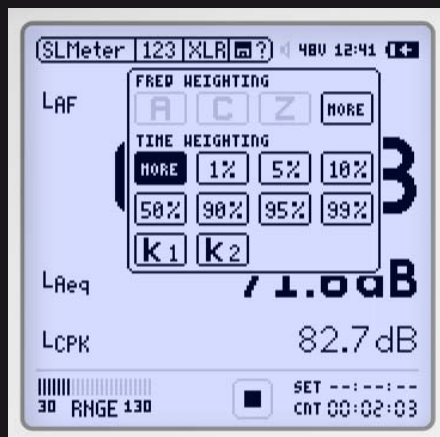
Cinema Meter Option

The Cinema Meter Option forms the dedicated solution for efficient calibration of cinema loudspeaker systems according to SMPTE ST 202:2010 and RP 200:2012.

XL2 Sound Insulation Option

The Sound Insulation Option enables the import of measurement data into the XL2 Sound Insulation Reporter software, a PC-based software application that provides all the standard reports for Airborne and Impact sound insulation measurements.

Extended Acoustic Pack Option



The Extended Acoustic Pack supports the daily tasks of acoustic consultants. It offers additional features for sound level logging and acoustic measurements, such as recording linear wav-files, percentile statistics, sound exposure level, 100 ms logging, event monitoring, RT60 in 1/3 octave resolution, Zoom-FFT with 0.4 Hz resolution and many more.

Remote Measurement Option

The Remote Measurement Option allows you to capture XL2 measurement data in real time into a PC application of your choice, e.g. MS Excel or LabView.

XL2 Data Explorer Option

The Data Explorer Option enables the import of logged sound level data into the XL2 Data Explorer software, a PC-based software application with a powerful data processor for easy and fast analysis of noise monitoring data.

Spectral Limits Option



The Spectral Limits Option adds an RTA Analyzer with 1/6 and 1/12 octave spectral resolution and the Zoom-FFT. It extends the XL2 function range with trace capturing, relative curve display and comprehensive tolerance handling. The XL2 Analyzer compares spectral measurements against reference curves or a tolerance band including PASS/FAIL results.

Type Approval Option

Upgrades the instrument to the XL2-TA, which forms, with the M2230 microphone, a type approved sound level meter.

OPTIONS

MEASUREMENT MICROPHONES

The microphones are 48 V phantom powered and include an electronic data sheet. The Automated Sensor Detection (ASD) of the XL2 Analyzer automatically reads this data, i.e. the microphone model and calibration data. This promotes faster setup and ensures accurate measurements.



Recommended microphones for the following applications:

Type	Description
M2230	For certified measurements with class 1 requirements according to IEC 61672, metal diaphragm
M2230-Outdoor	Class 1 outdoor measurement microphone (consists of M2230 and WP30 weather protection kit)
M2211	General purpose microphone, with class 1 frequency response and metal diaphragm
M2215	For high acoustic levels (up to 153 dB), with class 1 frequency response and metal diaphragm
M4260	Cost-effective class 2 microphone for general sound level testing, commissioning and service of audio-acoustic installations

	M2230 Class 1 Certified	M2211 Frequency Response Class 1	M2215 High SPL, Freq. Res. Class 1	M4260 Class 2
Microphone Type	Omni-directional, pre-polarized condenser, free field microphone			
Capsule / Transducer	1/2" detachable with 60UNS2 thread			1/4" fixed
PreAmplifier	MA220			-
Flatness acc. IEC61672-1	Class 1			Class 2
Frequency Range	5 Hz - 20 kHz			
Residual Noise Floor typical	16 dB(A)	21 dB(A)	25 dB(A)	29 dB(A)
Linear Range with XL2	24 - 139 dB(A)	29 - 144 dB(A)	33 - 153 dB(A)	35 - 144 dB(A)
Maximum SPL THD 3%, 1kHz	139 dB SPL	144 dB SPL	153 dB SPL	144 dB SPL
Sensitivity typ. @ 1kHz	-27.5 ±2 dBV/Pa (42 mV/Pa)	-34 ±3 dBV/Pa (20 mV/Pa)	-42 ±3 dBV/Pa (8 mV/Pa)	-31.7 ±4 dBV/Pa (26 mV/Pa)
Temp. Coef. <	-0.01dB/°C	±0.015 dB/°C		±0.02dB/°C
Temp. Range	-10°C to +50°C 14°F to 122°F			0°C - 40°C 32°F - 104°F
Pressure Coef.	-0.005dB/kPa	-0.02 dB / kPa		-0.04dB/kPa
Influence of Humidity	< ±0.05 dB (non-condensing)			< ±0.4 dB
Humidity	5% to 90% RH, non-condensing			
Long Term Stability	> 250 years / dB			not defined
Electronic Data Sheet	NTi Audio ASD according to IEEE P1451.4 V1.0 Class 2, Template 27			
Power Supply	48 VDC phantom power, 3 mA typical			
Connector	Balanced 3-pole XLR			
Dimensions	Length 150 mm (5.9"), diameter 20.5 mm (0.8")			
Weight	100 g, 3.53 oz			83g,2.93oz
NTi Audio #	600 040 050	600 040 022	600 040 045	600 040 025

Get full specifications at www.nti-audio.com/mic

ORDERING INFORMATION

Product	NTi Audio #
XL2 + M2230	600 000 355
XL2 + M2211	600 000 351
XL2 + M4260	600 000 340
XL2 Analyzer (no microphone)	600 000 330

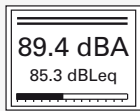
XL2 Options	NTi Audio #
Speech Intelligibility STIPA	600 000 338
Extended Acoustic Pack	600 000 339
Remote Measurement	600 000 375
Spectral Limits	600 000 376
Type Approval	600 000 377
Cinema Meter	600 000 379
Data Explorer	600 000 430
Sound Insulation Reporter	600 000 432

Options may be ordered with new instruments or later for user-installation in the field.

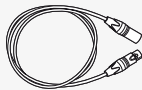


Accessories

More accessories at www.nti-audio.com/XL2



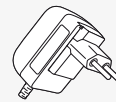
XL2 Projector
(PC Application
for free download)



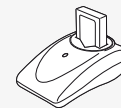
ASD Cable
5m, 10m, 20m
600 000 336/64/65



Precision Calibrator
600 000 388



Mains Power Adapter
International # 600 000 333
Americas # 600 000 301



Battery Charger
600 000 332



XL2 Input Keypad
600 000 384



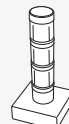
Ever-ready Pouch
600 000 335



Exel System Case
600 000 334



XL2 Limit Light
600 000 600



Stack Light
600 000 610



NetBox with Modem
600 000 458



Calibration Certificate
600 000 018

COMPLETE SOLUTIONS

Exel Set

The dedicated Exel Set for your application includes the protective system case with

- XL2 Audio and Acoustic Analyzer
- Measurement Microphone
- Firmware Options and Accessories to suit your solution



ASSOCIATED PRODUCTS



Signal Generator

Analog Audio: Minirator MR-PRO
Digital Audio: Digirator DR2



NTi Audio TalkBox

Calibrated Acoustic Generator
(STIPA Reference & other signals)



FLEXUS FX100

Analog and Digital
Audio Analyzer

TECHNICAL SPECIFICATIONS XL2

Sound Level Meter	
Product Configurations in accordance with IEC 61672 / ANSI S1.4	<ul style="list-style-type: none"> • XL2 with M2230 microphone <ul style="list-style-type: none"> » Class 1 certified with Shroud • XL2 with M2211 or M2215 microphone <ul style="list-style-type: none"> » Frequency response Class 1 • XL2 with M4260 microphone <ul style="list-style-type: none"> » Class 2
Complying Standards	<ul style="list-style-type: none"> • IEC 61672, IEC 60651, IEC 61260, IEC 60804, ANSI S1.4, ANSI S1.43, ISO 2969
Sound Level Measurements	<ul style="list-style-type: none"> • SPL actual, Lmin, Lmax, Lpeak, Leq, gliding Leq • Optional: Percentile statistics, sound exposure level • All measurement results simultaneously available • Correction value measurement wizard • Logging all data or subsets in selectable intervals • Recording of wav-files and voice notes • Limit monitoring showing exceeding sound levels • Digital I/O interface for external peripherals control
Weighting	<ul style="list-style-type: none"> • Frequency weighting: A, C, Z • Time weighting: Fast, Slow, Peak, optional: Impulse
Details	<ul style="list-style-type: none"> • Measurement bandwidth (-3dB): 4.4 Hz to 23.6 kHz • Level resolution: 0.1 dB • Internal noise: 1.3 μV A-Weighted
Real-Time Analyzer RTA	<ul style="list-style-type: none"> • Wide band • 1/1 octave band: 8 Hz - 16 kHz • 1/3 octave band: 6.3 Hz - 20 kHz • Capturing for comparative measurements
Acoustic Analyzer	
FFT Analysis	<ul style="list-style-type: none"> • Real-time FFT with actual level, Leq, Lmin, Lmax • Level resolution: 0.1 dB • Optional: Passed/failed measurements
Reverb Time RT60	<ul style="list-style-type: none"> • 1/1 octave bands results from 63 Hz - 8 kHz (T20) • Optional: 1/3 octave bands results from 50 Hz - 10 kHz
Delay Time	<ul style="list-style-type: none"> • Propagation delay between electrical reference signal and acoustic signal using the internal microphone
Polarity	<ul style="list-style-type: none"> • Checks polarity of speakers and line signals
1/12 Octave Analysis (optional)	<ul style="list-style-type: none"> • Actual level, Leq, Lmin, Lmax • Selectable 1/1, 1/3, 1/6 and 1/12 octave resolution • Passed/failed measurements
STIPA Speech Intelligibility (optional)	<ul style="list-style-type: none"> • Single value STI and CIS test result in accordance with IEC 60268-16 (1998, 2003, 2011) • Ambient Noise Correction • Automated averaging for repeated measurements • Modulation indices and individual band results

Audio Analyzer	
Level RMS	<ul style="list-style-type: none"> • True RMS detection in V, dBu, dBV and dB SPL • Range XLR/RCA input: 2 μV - 25 V (-112 dBu to +30 dBu) • Accuracy: \pm 0.5 % @ 1 kHz, • Flatness: \pm 0.1 dB @ 12 Hz to 21.3 kHz • Bandwidth (-3 dB): 5 Hz to 23.6 kHz
Frequency	<ul style="list-style-type: none"> • Range: 9 Hz to 21.3 kHz • Accuracy: $<$ \pm 0.003%
THD+N	<ul style="list-style-type: none"> • Range: -100 dB to 0 dB (0.001% to 100%) • Residual THD+N @ XLR/RCA input: $<$ 2 μV
Scope	Auto ranging, auto scaling
Filter	<ul style="list-style-type: none"> • Frequency weighting: A, C, Z • Highpass 100Hz, 400 Hz, 19 kHz, • Bandpass 22.4 Hz - 22.4 kHz
Input / Output Interfaces	
Audio Inputs	<ul style="list-style-type: none"> • XLR balanced with input impedance = 200 kOhm, phantom power: +48 V switchable • RCA unbalanced with input impedance $>$ 30 kOhm • Built-in condenser microphone for polarity testing, delay measurements and voice note recording
Audio Outputs	<ul style="list-style-type: none"> • Built-in speaker • Headphone connector 3.5 mm Minijack Stereo
USB Interface	USB mini connector for data transfer to PC, Remote Measurement, XL2 Projector and charging of battery
Digital I/O	Connection interface to accessories <ul style="list-style-type: none"> • XL2 Input Keypad • Digital I/O Adapter Box • Digital I/O Adapter PCB
Memory	SD Card included (8 GByte), removable, storing measurement data in ASCII format, screen shots, voice notes and wav-files
Power Supply	<ul style="list-style-type: none"> • Rechargeable Li-Po battery included • Dry cell batteries type AA, 4 x 1.5 V • Linear external power supply 9VDC • USB-Power Supply
General	
Clock	Real-time clock with lithium backup battery
Temperature	-10 °C to +50 °C (14° to 122°F)
Humidity	5% to 90% RH, non-condensing



info@nti-audio.com

www.nti-audio.com

All information is subject to change without notice.

Exel, XL2, M2230, M2211, M2215, M4260, Minirator MR-PRO, MR2, TalkBox and Flexus FX100 are trademarks of NTi Audio.

Made in  Switzerland